

NORTH FORK COMMUNITY THEATRE

*presents*



*Sandy Wilson's*

THE BOY  
FRIEND

October 23 - November 9, 2014

## PRESIDENT'S MESSAGE

Dear NFCT Friends,

Thank you for supporting the North Fork Community Theatre! As an all volunteer non-profit organization, we are a group of theatre lovers whose goal is to provide quality entertainment at affordable prices. Membership in the NFCT means supporting and being a part of a welcoming community group that has social and volunteer opportunities. Members attend and help organize social events, as well as act, sing, dance, design lights, find props, sew costumes, etc. We hope you consider joining the NFCT. See the back cover for more info.

The Boy Friend, the opening show for our 57th Season, is a bundle of fun that we hope will have you smiling in your seats! Please come back to see the other 4 shows in the season: Moon Over Buffalo, Over the River and Through the Woods, Camelot, and All Shook Up. You can purchase a "rest of the season" pass which include all 4 of these shows for only \$60 at [www.nfct.com](http://www.nfct.com) or 631-298-NFCT (6328).

Throughout this past year we have made significant improvements to the outside of the NFCT (we repaired the stained glass windows, painted the building, and installed a new marquee & new shed). We hope to put a covered porch at the entryway with an additional ticket window and benches to make our patron's experience even better. We are also in the planning phase to renovate the interior of the theatre including enhanced sound and technical capabilities.

We hope you will consider donating to the NFCT and helping us accomplish these significant renovation goals. Michael and Emilie Corey have agreed to match each dollar donated, up to \$300,000 through December 31, 2015. So each dollar you donate will be \$2 towards the renovations! Thank you again for all your past and future support!

Mary Motto Kalich  
President

### Board of Directors

Mary Motto Kalich, *President*

Mike Hipp, *Vice President*

Liz Lisanckie, *Treasurer*

Lauren Sisson, *Secretary*

Nancy DiGirolamo, John Hudson, Katrina Lovett,

Michele Messinger, Laura Pearsall, Sherry Powers, Charles Scheer

Proud Member of

**aact**  
AMERICAN ASSOCIATION  
OF COMMUNITY THEATRE

Visit our website:  
[WWW.NFCT.COM](http://WWW.NFCT.COM)



We welcome your feedback. Please send any comments or suggestions to President of the NFCT, Box 86, Mattituck NY 11952.

## North Fork Community Theatre

*presents*

# Sandy Wilson's THE BOY FRIEND

Director  
Mary Motto Kalich

Musical Director  
William Roslak

Producer  
Sherry Powers

Choreographer  
Kim Schafer

Assistant Director  
Mike Hipp

Assistant Choreographer  
Katrina Lovett

Book, Music and Lyrics by Sandy Wilson

*The Boy Friend* is presented through special arrangement  
with Music Theatre International (MTI)

All authorized performance materials are also supplied by MTI.  
421 West 54<sup>th</sup> Street, New York, NY 10019  
Phone: 212-541-4684 Fax: 212-397-4684  
[www.MTIShows.com](http://www.MTIShows.com)

*The videotaping or other video or  
audio recording of this production is strictly prohibited.*





**Hampton Coffee Company**  
part of our community since 1994

Hand-roasted coffee, fresh homemade food  
and so much more! We're closer than you think...

Find us @ Erik's Breakfast & Lunch • Peconic Hospital • IGA Markets  
Visit our Espresso Bar • Café • Bakery in Westhampton Beach  
bottom of Old Riverhead Road ~ Six Corners Roundabout

Shop online, get locations and more at  
[www.hamptoncoffeecompany.com](http://www.hamptoncoffeecompany.com)


f t YouTube p i



Presenting  
**28th Annual Harvest Gospel  
FREE CONCERT SERIES**

Thursday, Nov. 20 in Mattituck  
Friday, Nov. 21 in Southampton  
Sunday, Nov. 22 in Flanders  
*open to the public*

<< more info about these  
and other programs



**North Fork**  
DRYWALL & INSULATION

**Barry Murphy**  
(631) 298-5451 Office  
(631) 804-8511 Cell  
(631) 298-7326 Fax  
nfdiinc@optimum.net  
P.O. Box 1230 Mattituck, NY 11952

**CAST**  
*(in order of appearance)*

Hortense.....Christina Stankewicz  
Maisie.....Aria Saltini  
Dulcie.....Victoria Carroll  
Fay.....Marie Werner  
Nancy.....Raven Janoski  
Polly Browne.....Gabrielle Comanda  
Alphonse.....Jon Troiano  
Marcel.....Matt Tuthill  
Pierre.....Ryan Zlatniski  
Madame Dubonnet.....Lauren Sisson  
Bobby Van Husen.....Patrick O'Brien  
Percival Browne.....Bob Kaplan  
Tony.....Sam Notaro  
Lord Brockhurst.....Terry Brockbank  
Lady Brockhurst.....Jan McGoey  
Lolita/Policewoman.....Katrina Lovett

**CREW**

Director.....Mary Motto Kalich  
Musical Direction.....William Roslak  
Producer.....Sherry Powers  
Choreographer.....Kim Schafer  
*(choreographed: The Boy Friend, Won't You Charleston With Me,  
Sur La Plage, Nicer in Nice, Riviera)*  
Assistant Choreographer.....Katrina Lovett  
*(choreographed: Perfect Young Ladies, Fancy Forgetting,  
I Could Be Happy with You, A Room in Bloomsbury,  
Safety in Numbers, Don't Want to Play with Me Blues)*  
Set Dresser/Props.....Michele Messinger  
Assistant Director.....Michael Hipp  
Stage Manager.....Liz Liszanckie  
Set Construction.....Bob Kaplan, Josh Clauss  
Mary Motto Kalich, Michele Messinger, Zenus Diaz  
Costume Design.....Deanna Andes, Doreen Kirby  
Costumes.....Pat Speed, Heather Cusack, Diane Peterson  
Lighting.... David Scheer, Charlie Scheer, Julia Eager, Jose Corpuna  
Assistant to the Director.....Caitlin Jacobs  
Mural Artists.....Julia Eager, Caitlin Jacobs  
French Dialect Coach.....Carl Weaver  
English Accent Coach.....Terry Brockbank  
Photography.....Hannah Gray  
Stage Crew.....Kelly Lynn Cassidy, Hayley Sherian  
Box Office.....Collen Brickman, Jen Eager, Joanna Paulsen  
Refreshments.....Deb Rothaug



## SCENES

Act I: The Drawing Room of the Villa Caprice, Madame Dubonnet's Finishing School on the outskirts of Nice.

Act II: The Plage. The same afternoon.

Act III: The terrace of the Café Pataplon in Nice. The same night.

## MUSICAL NUMBERS

### ACT ONE

*Perfect Young Ladies*.....Hortense, Maisie, Dulcie, Fay, and Nancy

*The Boy Friend*..... Polly, Dulcie, Maisie, Fay, Nancy,  
Alphonse, Marcel and Pierre

*Won't You Charleston with Me?*.....Bobby and Maisie

*Fancy Forgetting*.....Madame Dubonnet and Percival

*I Could be Happy with You*.....Polly and Tony

*The Boy Friend (Reprise)*..... Ensemble

### ACT TWO

*Sur Le Plage*.....Dulcie, Maisie, Fay, Nancy, Alphonse,  
Marcel and Pierre

*A Room in Bloomsbury*.....Polly and Tony

*Nicer in Nice*.....Hortense, Alphonse, Marcel, Pierre,  
Dulcie, Fay, and Nancy

*You Don't Want to Play with Me Blues*.....Madame Dubonnet, Percival

*Safety in Numbers*.....Maisie, Bobby, Alphonse, Marcel and Pierre

*I Could be Happy with You (Reprise)*.....Polly and Ensemble

### ACT THREE

*The Riviera*.....Bobby, Maisie, Dulcie, Fay, Nancy,  
Alphonse, Marcel and Pierre

*Never Too Late*.....Lord Brockhurst and Dulcie

*Poor Little Pierrette*.....Madame Dubonnet and Polly

*The Boy Friend (Reprise)*..... Ensemble

Please note that there will be two, 10 minute intermissions between acts.  
Please enjoy something from our refreshment stand!

## NFCT AUDITIONS

Auditions for the North Fork Community Theatre production of *Moon Over Buffalo* will be on the following dates: Sunday, October 26th and Monday, October 27, 2014 7 - 9 pm. If callbacks

# MOON OVER BUFFALO

are needed they will be on Tuesday, October 28th 2014 7 - 9 pm. All roles are open. Any question please contact the director Robert Horn for more information: [rphornbird@aol.com](mailto:rphornbird@aol.com) or 631-744-2976. We are also looking to cast the following behind the scenes roles: Stage Manager, House Manager. Come and join a fun production team. Please contact Robert Horn at [rphornbird@aol.com](mailto:rphornbird@aol.com) or 631-744-2976.



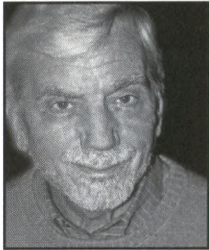
Auditions for *Over the River and Through the Woods* will be held on Saturday, December 6th from 2:00-4:00 pm and Sunday, December 7th 11:00 am - 1:00 pm. The performances are March 13th - 29th. Please contact the director, Bill Kitzerow at [bigapple299276@msn.com](mailto:bigapple299276@msn.com) or 703-409-5665 for more information.

Auditions for the 11th Annual NFCT Variety Show will be held on Friday, November 28th and Tuesday, December 2nd at 7PM. Showdates are Friday January 2nd, Saturday January 3rd, and Sunday January 4th. For more information, please contact Mike Hipp at [vp@nfct.com](mailto:vp@nfct.com)

11th  
Annual NFCT  
Variety  
Show



## CAST BIOGRAPHIES



**Terry Brockbank** (*Lord Brockhurst*) – Terry is delighted to return to the NFCT stage, where he previously portrayed “Colonel Pickering” in *My Fair Lady*, and directed A.R. Gurney’s *Labor Day*. Recent roles have included the title role in *Bottoms Up – The Private Lives of Noel Coward* at Northeast Stage, “Uncle Henri” in *My Three Angels* and “Froggy LeSoeur” in *The Foreigner*, both at Hampton Theatre Company. Terry shares his time between homes in New York City and Shelter Island.

**Victoria Carroll** (*Dulcie*) Victoria previously performed at the NFCT in *The Wedding Singer*, *Legally Blonde*, *South Pacific* and *Footloose*. Last spring, Victoria was selected for the 2014 Future Dancers and Dancemakers program at NYU’s Tisch School of the Arts. She is a Riverhead High School Senior and is the Founder/Captain/Choreographer of the kickline dance team, which performs at home Varsity football games. Victoria is a member of the RHS Chamber Choir, Blue Masques, and studies dance at the Peconic Ballet Theatre.



**Gabrielle Comanda** (*Polly*) Gabrielle is thrilled to be playing the lead role in *The Boy Friend!* After playing “Rapunzel” in *Into the Woods*, she happily returns to NFCT for a second time. A graduate of the Five Towns College Theater Division, her past credits include *Sleeping Beauty*, *How to Succeed in Business Without Really Trying*, *The Children’s Hour*, *Ragtime*, *The Wizard of OZ*, *The Producers*, and *Mame!* She would like to thank the entire cast and crew for all their hard work and her friends and family for their love and support!

**Raven Janoski** (*Nancy*) Raven is very excited to be a part of *The Boy Friend* cast and crew. Here at the NFCT, Raven has also taken a part in the musicals *Into the Woods* and *Gypsy*. Other plays she’s been in include *Aladdin*, *High School Musical*, *Once Upon a Mattress*, *13 Ways to Screw up your College Interview*, and many others. Raven would like to thank all the people that made this production possible, as well as the wonderful cast, who she hopes to be able to collaborate with in the future.



**Bob Kaplan** (*Percival Brownie*) Bob is thrilled to be back at NFCT. Bob has been acting and directing at various theater companies around Long Island for the last 25 years. At NFCT, he was in *The Price* and *Early One Evening At The Rainbow Bar & Grill* and he directed *Man of La Mancha*, *Wait Until Dark* and recently *One Flew Over The Cuckoo’s Nest*. At other venues, he has enjoyed acting in *Laughter on the 23<sup>rd</sup> Floor* and *The Night of the Iguana* and directed the NY area premiere of *Becky’s New Car*, as well as *Sylvia*, *Glengarry Glen Ross*, *How To Succeed in Business Without Really Trying*

without the support of his leading lady and his co-star son at home, who support his passion for live theater, he’d be a viewer, not a doer.

**Katrina Lovett** (*Lolita*, Assistant Choreographer) Katrina is excited to be back on stage for her third show with the NFCT. Other recent local performances include ensemble roles with the RFCT and Peconic Ballet Theater. When not on stage, Katrina works in marketing and events with several nonprofit organizations on Long Island. She would like to thank the cast and crew of *The Boy Friend* for all their hard work and friendship, Mary for the invite to come on board, and John for his love and support.



**Jan McGoe** (*Lady Brockhurst*) Jan began her NFCT career in 1984 as “Elaine Wheeler” in *Nightwatch*. Most recently she performed many roles in *I Love You, You’re Perfect, Now Change*, “Reno Sweeney” in *Anything Goes*, “Hedy Larue” in *How to Succeed in Business Without Really Trying* and “Sonia” in *Godspell*. You have seen some of her choreography in *Anything Goes*, *Carousel*, *Oklahoma*, *Nunsense*, *Godspell* and *The Pajama Game*. She is newly married to Charles McGoe and has two talented daughters, Erin and Tara McKenna.

**Sam Notaro** (*Tony*) Sam is an east end native, and graduated from Southold High School. Sam has previous experience at NFCT with the Youth On Stage performances of *Once Upon a Mattress* and *The Pajama Game*. Sam has also performed the part of “Steve” in *Zanna Don’t* while attending Rensselaer Polytechnic Institute. Sam is excited to return to the stage after five years as “Tony” in *The Boy Friend*.



**Patrick O’Brien** (*Bobby Van Husen*) Patrick is beyond excited to be sharing the stage with such an awesome cast. He has appeared in high school and community theatre productions. He was most recently seen on this stage as “Jack” in *Into the Woods*. He has been performing since he was nine years old and has won two *Teeny Awards* for performances in drama. Much love to family, friends, the cast, the production team, and you. Enjoy!

**Aria Saltini** (*Maisie*) Aria is 17 years old, and is beyond excited to be a part of this incredible show! She has performed in many shows with the Riverhead Blue Masques, most recently as “Dorothy” in *The Wiz* and “Mary Hatch” in *It’s A Wonderful Life: A Live Radio Play*. Aria was also in RFCT’s *Sensical Jr.* and *Next Stop... Broadway*. She played violin in the pit orchestra of NFCT’s *Into The Woods*, and this summer she studied musical theatre at Berklee College of Music. Aria loves and thanks every single person involved with *The Boy Friend!* Enjoy the show!







**Lauren Sisson** (*Madame Dubonnet*) Lauren is happy to be back on the NFCT stage. Most recently at NFCT, she played "Anna" in *The King and I*, performed a solo concert, *A Fine Romance*, and sang a duet with husband Mark in this year's variety show. Now that she's playing a Frenchwoman, she's grateful for all the French classes she took in high school and college (and hopes she can do them justice). Lauren lives in Mattituck and works for Times/Review Newsgroup.

**Christina Stankewicz** (*Hortense*) Christina is thrilled to be in *The Boy Friend*. You may have seen her in *The Wedding Singer* this past summer as "Rosie" here at the NFCT. Christina would like to thank everyone involved with the show for making it a truly wonderful experience. Enjoy!



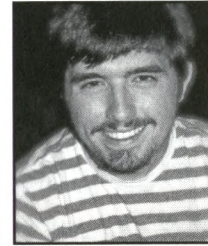
**Jonathan Troiano** (*Alphonse*): Jon is eighteen years-old and is currently a freshman at Suffolk County Community College. This is his debut with the NFCT, which he is very excited about. In the past, he has performed in many productions with the Riverhead Blue Masques, such as *The Wiz* as "Scarecrow", *It's A Wonderful Life* as "George Bailey", *Fiddler on the Roof* as "Reb Tevye", *A Christmas Carol* as "Ebenezer Scrooge", *West Side Story* as "Action" – for which he received a Teeny Award for "Outstanding Performance" – and *Once Upon a Mattress* as "King Sextimus." Finally, Jon would like to thank the cast and crew for such an awesome first experience

with the NFCT. Break a leg!



**Matthew Tuthill** (*Marcel*) Matt is a graduate of Riverhead High School and this marks his 2nd NFCT performance. He enjoys running and can play a variety of different instruments. Hoping to move forward with a career in Voice-Over, he pushes for any role he can get with these shows and is proud to be part of this cast.

**Marie Werner** (*Fay*) This is Marie's first performance at NFCT. Past acting credits include "Peggy" in *Godspell* at the Clare Rose Playhouse, as well as "Bet" in *Oliver!*, "Robin" in *Godspell*, "Stacie Snip" in *Little Shop of Horrors* and "Polly" in *The Boy Friend* at McGann-Mercy H.S. Marie sings at many local parishes, directs a children's choir, and gives piano lessons. She is also a paramedic at her local fire department. She would like to thank her family and friends for their ongoing love and support.



**Ryan Zlatniski** (*Pierre*) is an 18 year old Mattituck native. He has been in 6 productions previous to this one. In fact, he recently made his debut at the NFCT thanks to last summer's production of *The Wedding Singer*. He played the role of "Sammy", the sleazy bass player and best friend of Robby Hart. He is thrilled to be in this production because it gives him a chance to truly test out his accent mimicking abilities. He's having a swell time and hopes everyone enjoys the show!

---

## CREW BIOGRAPHIES

**Deanna Andes** (Costumer) At North Fork Community Theatre, Deanna has been a costumer for *Carousel* and *One Flew Over the Cuckoo's Nest*. She has been the producer for *Rabbit Hole*, *The Three Sisters*, *Harvey*, *Night Mother*, and *One Flew Over the Cuckoo's Nest*. Deanna has been an active member of the NFCT since 2008. Thank you cast and crew, it's been a pleasure. Thank you J.C.J.P.M for letting me spend the time needed to put these costumes together.

**Julia Eager** (Lighting and Set Painting) Julia Eager is a high school student who unfortunately is not indigenous to England or France. However, she enjoys living near the NFCT, where she has done lights, sound, and paintings in the past. This is her first time painting major bits of the set and would like to thank Cait Jacobs for her all-around fabulousness! Elle espere que vous appreciez le spectacle!

**Mike Hipp** (Assistant Director) Mike has filled many roles at the NFCT over the years both on stage and behind the scenes. He currently serves on the Board of Directors. Favorite on stage roles include "Finch" in *How to Succeed in Business without Really Trying*, "Coneybear" in *...Spelling Bee* and "Anthony" in *Sweeney Todd*. Mike has enjoyed working with Mary and the rest of *The Boy Friend* team and looks forward to a wonderful run.

**Cait Jacobs** (Assistant to the Director and Set Painting) Cait loved working with the amazing cast and crew of *The Boy Friend*, and can't wait to finally see the show complete. Cait loved both working on the set with Julia Eager, and helping out the director during rehearsals. This is Cait's third time helping out for a NFCT show, after previously doing the lights for *Into the Woods* and *The Wedding Singer*. She hopes to help with many more NFCT shows in the future, whether in the light booth, working on the set, or helping out the director. Cait wishes to thank Mary for giving her this amazing opportunity, as well as the rest of the cast and crew for making this experience fun and memorable. She wishes the cast good luck and hopes everyone enjoys the show!



**Mary Motto Kalich** (Director) *The Boy Friend* is Mary's directorial debut. Although she has acted, produced, asst. directed and worked crew for dozens of shows at the NFCT, this experience directing has been even more magical than all of the rest. She is surrounded by extremely talented and committed people who generously volunteer their time at the NFCT. She can not thank them enough for making this show incredible. Mary also dearly loves the men in her life: Thanks to Nate and Micky for being there for me.

**Liz Liszanckie** (Stage Manager) This is Liz's second show as stage manager. After a wonderful experience with *Into the Woods*, she couldn't wait to get backstage again. Liz is also on NFCT's board as treasurer, and is always looking for new ways to help out around the theatre.

**Michele Messinger** (Set Dresser & Props) Tiring of rearranging the furniture in her own home, Michele comes to the NFCT as the set dresser/property mistress for *The Boyfriend*. Having previously volunteered for the gala committee and front of the house duties and assisted with props for *Into The Woods*, this marks her backstage debut.

**Sherry Powers** (Producer) Since her first performance on the NFCT stage at the age of 13, Sherry has performed in numerous shows, including her most recent appearances as "Smitty" in *How To Succeed in Business Without Really Trying* and a Variety Show number with her niece, Molly. She is excited to be working with Mary and the talented cast and crew of *The Boy Friend* as she makes her debut in the role of producer.

**William Roslak** (Musical Director) William is a graduate of Westminster Choir College in Princeton, New Jersey, where he studied organ and sacred music. While a student at Westminster, William was featured in two Naxos label recordings with the Williamson Voices, one of which was nominated for the 2014 Grammy Award for best choral performance. He was a tenor and organ soloist with the ensemble at Alice Tully Hall in Lincoln Center. He was also a member of the Westminster Symphonic Choir, having collaborated with many major international orchestras under the batons of Gustavo Dudamel, Daniel Barenboim, and Sir Simon Rattle. William was the organ scholar at the Cathedral Basilica of Ss. Peter and Paul in Philadelphia where he played weekly masses and accompanied and co-directed the Cathedral Choir. As a solo recitalist, William has performed in many venues including the Cathedral of St. Agnes in Rockville Centre, Princeton University Chapel, and the Church of St. Mary the Virgin in Times Square. He was recently featured in the 34<sup>th</sup> annual "A City Singing at Christmas" concert at St. Patrick's Cathedral in New York City.

**Kimberly Schafer** (Choreographer) Kimberly received her Bachelor of Performing Arts in Dance Performance from Oklahoma City University. She was associate

choreographer for *Broadway Bares 24* and *Dancing on a Dream* at The Duke Theatre in New York. Her regional choreography credits include *The Drowsy Chaperone*, *Singing in the Rain*, *On the Town* at the Hobby Center, *Crazy for You*, and many more. She performed in *Broadway Bares 17-23* produced by Jerry Mitchell and *Easter Bonnet* at The Minskoff Theatre. She has performed in various regional productions such as *Funny Girl*, *Singin in the Rain*, *The Will Rogers Follies*, *Cabaret*, and the National Tour of *42<sup>nd</sup> Street*. She currently choreographs and performs in a cabaret called *SpeakEasy Moderne* at the Cutting Room and the Triad Theatre in NYC.

#### ORCHESTRA

Musical Director/Pianist.....William Roslak  
 Trumpet.....Colin VanTuyl  
 Banjo/Guitar.....Bob Blank  
 Drums.....Zach Branker  
 Alto Saxophone.....Frank Derasmo  
 Alto Saxophone.....Lise Turbush

*Thank you to Cedar House Bed and Breakfast & Scarola Vineyards,  
 Sannino Bella Vita Vineyards, and Water's Crest Winery.*

#### *Director's Note:*

Directing a show at the NFCT is something that in retrospect I believe I have been working towards for years. Perhaps even since the 1980's when I first acted and volunteered here as a teenager. Even at that age the ebbs and flows of working on shows were a huge part of my life: the excitement of auditions: who will be the people you will be working so closely with for the next few months? The first rehearsals: getting to know everyone, leading to hours of long rehearsals: hard work, day in and day out. Then the click when it starts to all come together, the costumes and makeup go on, and finally, together, we put on a show that makes people smile and laugh and just feel!

So when I was given the opportunity to direct *The Boy Friend*, my first thought was AWESOME! And my second thought was YIKES! And then I thought – to make this show great, we are going to need the skills of lots of different people. And wonderfully, so many great people were interested in being a part of this show. It is because of their dedication, talent, willingness to dream and plan, and work and rework, and rework again, that this show has come together so well.

I am struggling as I write this, because I want to name names and give examples of how all of the cast and crew worked together to make the magic of this show. But I can't – because that would take up dozens of pages. So instead, I implore you to look at the list of cast and crew at the front of the program, and know that each and every one of those people contributed. And that without any one of them, it would not be the great show it is.

THANK YOU to *The Boy Friend* cast and crew. You have made my directorial debut an incredible experience.

-Mary Motto Kalich



Sonomi North Fork Professional Makeup  
Sonomi Obinata was the Makeup Advisor for *The Boy Friend*



917.601.9723

www.sonominf.com



*The Chefs' Warehouse*

James Liszanckie  
Long Island Sales  
Cell (646) 505-9988  
Fax (631) 204-6885

Email Liszanckie@chefswarehouse.com

55500 MAIN ROAD  
SOUTHOLD, NY  
631-765-3100



"Family friendly"

LUNCH -DINNER  
TAKE OUT  
OPEN 7 DAYS

"A local favorite!"

Est. 2006

## NORTH FORK COMMUNITY THEATRE

*BUILDING  
ON  
TRADITION*



**Renovation  
Campaign**

Thank you for your support of  
the North Fork Community Theatre.

This past year we renovated the outside of the building. The renovations included: painting and new signs on the outside of the building, repairing the stained glass windows, new doors, new curtains and a new prop shed.

With your help, we hope to be able to make the inside MATCH the outside! Renovation planning is underway and will include sound, lighting and seating. We also hope to add a new covered porch outside the lobby.

Michael and Emilie Corey have agreed to MATCH all donations through December 31, 2015. So for every \$100 that you donate, \$200 will go towards renovations.

Please consider helping us maintain and improve our *Home Sweet Home* by making a donation today!

Mary Motto Kalich, President

**It takes a community...**



## NFCT SHOWS

(M=Musical YM=Youth Musical)

- 1957**  
The Man Who Came to Dinner
- 1958 - 1959**  
Harvey  
Bus Stop  
A Visit to a Small Planet  
Romanoff and Juliet
- 1959 - 1962**  
Night Must Fall  
Born Yesterday  
The Glass Menagerie  
Guys and Dolls (M)
- 1962 - 1963**  
The Happy Time  
The Hasty Heart  
Petticoat Fever  
Critic's Choice  
Damn Yankees (M)
- 1963 - 1964**  
Mousetrap  
Separate Tables  
The Crucible  
The Pajama Game (M)
- 1964 - 1965**  
Kiss Me Kate (M)  
Blithe Spirit  
The Peanut Butter Prince  
(an original musical  
written for the NFCT)  
The Potting Shed
- 1965 - 1966**  
Mary, Mary  
Save Me a Place at Forest Lawn  
The Browning Version  
Call Me Madam (M)
- 1966 - 1967**  
There Comes a Time (M)  
Write Me a Murder  
My Three Angels
- 1968 - 1969**  
Bell, Book and Candle  
The Absence of a Cello  
The Peanut Butter Prince (M)  
She Loves Me (M)
- 1969 - 1970**  
The Little Foxes  
Jack in the Box (M)  
The Thurber Carnival  
Little Moon of Alban  
The Odd Couple  
Bells Are Ringing (M)
- 1970 - 1971**  
The Haunting of Hill House  
Auntie Mame  
Man of La Mancha (M)  
The Music Man (YM)
- 1971 - 1972**  
The Price  
Wait Until Dark  
See How They Run  
Finian's Rainbow (M)  
South Pacific (YM)
- 1972 - 1973**  
Spoon River anthology  
Who's Afraid of Virginia Woolf?  
Summer and Smoke  
Carnival (M)  
Anything Goes (YM)
- 1973 - 1974**  
A Thousand Clowns  
The Effect of Gamma Rays on  
Man-in-the-Moon Marigolds  
Cabaret (M)  
Funny Girl (YM)
- 1974 - 1975**  
40 Karats  
The Lion in Winter  
A Ms. By Any Other Name  
Kismet (M)  
Guys and Dolls (YM)
- 1975 - 1976**  
Bertha the Beautiful Typewriter Girl  
Dark of the Moon  
Prelude  
Of Thee I Sing (M)  
Brigadoon (YM)
- 1976 - 1977**  
Arsenic and Old Lace  
The Night of January 16th  
Finishing Touches  
The Country Girl  
Fiddler on the Roof (M)  
L'il Abner (YM)
- 1977 - 1978**  
Desk Set  
A Man for All Seasons  
Angel Street  
Calamity Jane (M)  
Dames at Sea (YM)
- 1978 - 1979**  
Inherit the Wind  
The Last of the Red-Hot Lovers  
A Clearing in the Woods  
The Pirates of Penzance (M)  
Little Mary Sunshine (YM)
- 1979 - 1980**  
The Rope Dancers  
Come Blow Your Horn  
Anatomy of a Murder  
Godspell (M)  
Once Upon a Mattress (YM)
- 1980 - 1981**  
6 Rms Riv Vu  
Three For Gin  
Butterflies Are Free  
Applause (M)  
The Boy Friend (YM)
- 1981 - 1982**  
The Fantasticks (M)  
Tea House of the August Moon  
Desperate Hours  
The Peanut Butter Prince (M)  
Anything Goes (YM)
- 1982 - 1983**  
Frankenstein  
Da  
Chapter Two  
A Funny Thing Happened on  
the Way to the Forum (M)  
Henry, Sweet Henry (YM)
- 1983 - 1984**  
Barefoot in the Park  
Deathtrap  
Blithe Spirit  
Company (M)  
Oklahoma! (YM)
- 1984 - 1985**  
Never Too Late  
On Golden Pond  
Night Watch  
Gypsy (M)  
Babes in Arms (YM)
- 1985 - 1986**  
Dracula  
Harvey  
Tea and Sympathy  
The Sound of Music (M)  
The Music Man (YM)

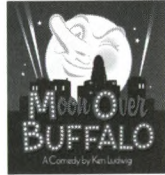
## NFCT SHOWS

(M=Musical YM=Youth Musical)

- 1986 - 1987**  
Plaza Suite  
Our Town  
The Miracle Worker  
Mame (M)  
Bells Are Ringing (YM)
- 1987 - 1988**  
You Can't Take it With You  
Kind Lady  
Don't Drink the Water  
Kiss Me Kate (M)  
Grease (YM)
- 1988 - 1989**  
The House on the Cliff  
The Philadelphia Story  
Stalag 17  
Promises, Promises (M)  
Beauty and the Beast (YM)
- 1989 - 1990**  
A Streetcar Named Desire  
Witness For the Prosecution  
Light Up the Sky  
Oliver (M)  
South Pacific (YM)
- 1990 - 1991**  
The Crucible  
Bus Stop  
Mr. Roberts  
Sweet Charity (M)  
West Side Story (YM)
- 1991 - 1992**  
Sweet Bird of Youth  
The Rainmaker  
The King and I (M)  
The Best Man  
Joseph and the Amazing  
Technicolor Dreamcoat (YM)
- 1992 - 1993**  
The Nerd  
Tribute  
Hello, Dolly! (M)  
A Few Good Men  
Deadwood Dick (YM)
- 1993 - 1994**  
Speaking of Murder  
The Madwoman of Chaillet  
Carousel (M)  
The Man Who Came to Dinner  
Leader of the Pack (YM)
- 1994 - 1995**  
A Man For All Seasons  
Fools  
A Tree Grows in Brooklyn (M)  
The Prime of Miss Jean Brodie  
Good News (YM)
- 1995 - 1996**  
Morning's at Seven  
A Doll's House  
Lost in Yonkers  
Where's Charley (M)  
Guys and Dolls (YM)  
Bell, Book and Candle
- 1996 - 1997**  
Picnic  
Brighton Beach Memoirs  
Nunsense (M)  
Into the Woods (YM)
- 1997 - 1998**  
The Caine Mutiny Court Martial  
Lettice and Lovage  
Broadway Bound  
Breaking Legs  
Bye, Bye Birdie (YM)
- 1998 - 1999**  
Early One Evening at  
the Rainbow Bar and Grill  
The Farndale Avenue  
Housing Estates . . . Murder Mystery  
Sweeney Todd (M)  
A Chorus Line (YM)
- 1999 - 2000**  
The Chalk Garden  
Born Yesterday  
The Diary of Anne Frank  
Jerry's Girls (M)  
Annie (YM)
- 2000 - 2001**  
Deathtrap  
Biloxi Blues  
Dancing at Lughnasa  
She Loves Me (M)  
Damn Yankees (YM)
- 2001 - 2002**  
To Gillian on Her  
37th Birthday  
Rumors  
No Way to Treat a Lady (M)  
Ten Little Indians  
Brigadoon (YM)
- 2002 - 2003**  
Wait Until Dark  
Lend Me a Tenor  
I Hate Hamlet  
You're a Good Man  
Charlie Brown (M)  
Little Shop of Horrors (YM)
- 2003 - 2004**  
A Play on Words  
(Eleemosynary and  
selections from All in the Timing)  
Love Letters  
Nude With Violin  
Cinderella (YM)
- 2004 - 2005**  
The Foreigner  
The Price  
Man of La Mancha (M)  
The Pajama Game (YM)
- 2005 - 2006**  
The Dining Room  
The Glass Menagerie  
Godspell (M)  
Fiddler on the Roof (YM)
- 2006 - 2007**  
Crimes of the Heart  
Lunch Hour  
My Fair Lady (M)  
Once Upon a Mattress (YM)
- 2007 - 2008**  
Our 50th Season  
The Fantasticks (M)  
Nunsense (M)  
Gypsy (M)  
Babes in Arms (YM)
- 2008 - 2009**  
Proof  
Labor Day  
Sound of Music (M)  
Guys and Dolls (YM)
- 2009-2010**  
Rabbit Hole  
Arsenic and Old Lace  
Anything Goes (M)  
110 in the Shade (M)  
Kiss Me Kate (YM)
- 2010-2011**  
Dead Man's Cell Phone  
Three Sisters  
25th Annual Putnam  
County Spelling Bee (M)  
Oklahoma (M)  
Footloose (YM)
- 2011-2012**  
Harvey  
Doubt  
How To Succeed In Business  
Without Really Trying (M)  
The King and I (M)  
South Pacific (YM)
- 2012-2013**  
Night Mother  
Golden Pond  
Joe's Coat (M)  
Carousel (M)  
Legally Blonde (YM)
- 2013-2014**  
I Love You, You're Perfect,  
Now Change (M)  
Steel Magnolias  
One Flew Over the Cuckoo's Nest  
Into the Woods (M)  
The Wedding Singer (YM)



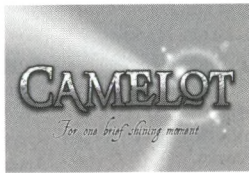
**NORTH FORK COMMUNITY THEATRE  
2014-2015 SEASON**



**Moon Over Buffalo**  
January 16 - February 1

**Over the River and  
Through the Woods**

March 15 - 29



**Camelot**  
May 14 - 31

**All Shook Up**  
(Youth on Stage)  
July 23 - August 9



**Special Events**



**It's a Wonderful Life:**  
December 13-14

**11th Annual Variety Show**  
January 2-4

11th  
Annual NFCT  
Variety  
Show

Tickets: \$15 for plays, \$20 for musicals  
at [www.nfct.com](http://www.nfct.com) or 631-298-NFCT (6328)

**NORTH FORK COMMUNITY THEATRE**

**IT'S A  
WONDERFUL LIFE**  
A LIVE RADIO PLAY  
BY JOE LANDRY

December 13th at 8:00PM • December 14th at 2:30PM

Tickets: \$15  
[www.nfct.com](http://www.nfct.com) • 631-298-NFCT (6328)

**NFCT SEASON SUBSCRIPTIONS ON SALE!**

Become an NFCT Season Subscriber and see  
the remaining 4 shows in the season for only \$60.

Call 631.298.4500 or E-mail [boxoffice@nfct.com](mailto:boxoffice@nfct.com)

\* Season Subscribers can choose their  
seats now in advance OR do the "Flex Plan"  
and choose their seats before each show.

**NFCT HOLIDAY GIFT CERTIFICATES**

Give the gift of theatre!

Gift certificates for a NFCT Season Subscription (all shows)  
or for individual shows are available at: [www.nfct.com](http://www.nfct.com) or  
631-298-NFCT(6328). Call 631-298-4500 for more information.



# PASSION




It's what success  
is all about for  
BNB customers.

At Bridgehampton National Bank, we're committed to helping you build your business and stay on top of your competitive challenges... so you can stay in touch with your passion.

*Pursue Your Passion. Let BNB Show You How.*



Branches in Suffolk and Nassau Counties | 631.537.1000 | [www.bridgenb.com](http://www.bridgenb.com) Member FDIC 

## BRUCE E. SAUL, LCSW-R

### Counseling & Psychotherapy

Adolescents, Adults, Couples & Families

18 Years Experience

Offices in Greenport and Shelter Island

**631-871-9933**

Hours by appointment, including evenings and weekends

[THERAPIST.PSYCHOLOGYTODAY.COM/52570](http://THERAPIST.PSYCHOLOGYTODAY.COM/52570)

*We are proud to support North Fork Community Theatre*

Law Offices  
**Wickham, Bressler, & Geasa, P.C.**  
Main Road, Mattituck, NY  
631-298-8353  
[awickham@wbglawyers.com](mailto:awickham@wbglawyers.com)  
Website: [wbglawyers.com](http://wbglawyers.com)

Estates, Trusts, and Estate Settlement  
Estate Planning and Elder Law Issues Business Matters  
Real Estate Sales, Purchases, Leases and Land Use  
Matrimonial, Civil Litigation and Matrimonial Matters

**Eric J. Bressler, Esq. Abigail A. Wickham, Esq. Janet Geasa, Esq.**

*Close By and Confidential*



Old World Charm-New World Amenities  
[www.cedarhouseonsound.com](http://www.cedarhouseonsound.com)

Phone: 631.298.7676 • 4850 Sound Avenue, Mattituck, NY 11952



From Our Family to Yours  
[www.scarolavineyards.com](http://www.scarolavineyards.com)



**Harvest Moon Shellfish Co.**  
[HarvestMoonShellfish.com](http://HarvestMoonShellfish.com)

P.O. Box 1200, Mattituck, NY 11952

Tel. 631.461.8367

Email: [HarvestMoonShellfish@gmail.com](mailto:HarvestMoonShellfish@gmail.com)



## NFCT JURIED ART SHOW

*"What is your vision of the North Fork Community Theatre?"*

Show us paintings, photographs and sketches! Works should convey the artist's vision of the North Fork Community Theatre (NFCT). Winning entries will be displayed at the NFCT this winter.

Artwork may be in any two-dimensional medium including photography, painting or sketch form. In addition to the overall awards, there will be a separate award for architectural renderings/sketches of the building. Architectural rendering & sketch submissions will also be considered by the NFCT to be used as their logo for future print and online branding.

- November 1<sup>st</sup>, 2014 – Submission Deadline
- December 2014 – April 2015 - Show exhibition at the NFCT
- January 2<sup>nd</sup>, 2015 – Opening Reception at 7PM at the NFCT

For More Info: [Contact@nfct.com](mailto:Contact@nfct.com) or 631.298.4500

## Rated TOP 5% Nationally

**WINNER** Outstanding Patient Experience Award

*Three Years Consecutively*

*ELIH is a GREAT Hospital. Thank you for being our neighbor."*

— Alison Hegeman  
Peconic Landing



**ELIH** EASTERN LONG ISLAND HOSPITAL  
Putting CARE back in HealthCARE 

201 Manor Place • Greenport, NY • 631.477.1000 • [www.ELIH.org](http://www.ELIH.org)

## EAST END GERIATRIC AND ADULT MEDICINE, PLLC

JAY P. SLOTKIN, M.D., M.P.H., A.G.S.F., C.M.D., F.A.C.P

50 Ackerly Pond Lane  
P.O. Box 1437  
Southold, NY 11971

(631) 765-1414  
(631) 765-1428 (fax)



**AUTO PARTS**

CHUCK MARTIN

**AUTO, TRUCK, MARINE, FARM & PAINTS**

C. Martin Automotive Enterprises, LTD.

631-734-9000

631-734-5318

HARD TO FIND PARTS IN 24 HOURS OR LESS!

P.O. Box 761

Cutchogue, NY, 11935

## Advertise in the NFCT Programs

*Let NFCT patrons know about your business!*

Please call: 631.298.4500

or Email: [advertising@NFCT.com](mailto:advertising@NFCT.com)

### NFCT Rates - 5 Shows for the Price of 4!

size	1 show	2 shows	3 shows	4 shows	5 Shows!
FULL PAGE	200	400	600	800	800
1/2 PAGE	100	200	300	400	400
1/4 PAGE	60	120	180	240	240



## Thank You To Our Donors

### BUILDING ON TRADITION - CHAIRMAN

Michael and Emilie Corey\*  
Richard Manfredi\*

### BUILDING ON TRADITION - GOLD

Wilbur Osler  
Barbara Reiter, Aeroflex\*

### 1% Club

Anonymous  
Carin and Joseph Francica  
and The San Diego Foundation  
Michael Hipp and Kimet Speed+\*  
Mary and Nathan Kalich+\*  
Metabolic Studio  
Charles and Marilee Scheer+  
Thorton and Sherry Smith\*

### ANGELS

Stanley and Margaret Brown+\*  
Connie Latson+\*  
The Moore Charitable Foundation  
Joe and Mary Ann Siczka+\*  
Suffolk County  
Pat Wall+\*

### BENEFACTORS

William Albertson+  
Jay Cardwell and Eric Rouleau\*  
Jed Clauss and Joanna Paulsen  
In memory of Mary Ann Siczka  
and Bob Ackroyd+\*  
Helen Duryea\*  
Kathy McMahon and the George T.  
and Ruth C. Laboda Foundation\*  
Kate Thomes, In memory of Russell F. Thomes, Jr.  
The Ellen M Violet and  
Mary PR Thomas Foundation  
Patricia and Vince Ward+\*

### PRODUCERS

Kenneth E. Ackley+\*  
Susan and Leif Ahrens+\*  
Mr. and Mrs. George Aldcroft+\*

Gayle and Julie Alexander  
In honor of David Markel  
Anonymous\*  
Eunice Armbrust\*  
Martine & Peter Baschnonga\*  
Evelyn Bergen+\*  
David Bofill  
Helen Brann  
Emily and Jack Breese  
and The Seattle Foundation+  
Mr. and Mrs. Franklin Brehmer  
Capital One Bank  
Linda Ric Cohen Fund for Arts  
and North Fork Reform Synagogue\*  
Phyllis and John Conley  
Cook, Hall & Hyde, Inc.  
JeanMarie Costello  
In Memory of Dennis Quinn  
Nancy and Francis Deegan+  
Anne B. Farrell  
Mr. and Mrs. David Fisher\*  
Ellie and Joe Friedman\*  
Walter and Marilyn Gatz+\*  
Michael Geraci\*  
Edgar and Nancy Goodale  
Rod and Georgia Griffis\*  
Cast of Gypsy  
Joseph and Christine Haeg+  
Charles and Greta Hedberg\*  
Richard and Patricia Lark+\*  
Pat Latham  
Edwina G. Latson  
John and Patricia Lockwood+  
Ann Mallouk\*  
Maria and Mark Manzi\*  
Jeanne M. Markel and Chris Wedge+  
Dee and Willy Martin+  
Marie and Eddie McDonald+\*  
Andrew Mitchell and  
Peconic Bay Medical Center\*  
Dale and Stacey Moyer  
In memory of Mary Ann Siczka\*  
Laura and Jim Pearsall\*  
Nancy Reeve  
The Rempel Family+\*  
REVCO  
Dr. and Mrs. Richards  
In Tribute to Judy Utter+\*

## Thank You To Our Donors

Riverhead Building Supply\*  
Laurie and Erwin Rodger  
Stanley Rubin+\*  
Bill and Maureen Sanok+\*  
Mark and Lauren Sisson\*  
Jay and Joanne Slotkin  
In honor of Jed Clauss\*  
Mr. and Mrs. Raymond Terry+\*  
Nancy Gilbert and Richard Wines\*  
Gene and Mary Yourch\*

### DIRECTORS

Barbara Ackerman\*  
Anita Albertson  
Joan Au\*  
Cast of Babes in Arms  
Mr. and Mrs. Albert Barbero, Jr.\*  
William Beardslee\*  
The Beodeker Family+  
Phil and Marilyn Centonze  
Christine Christie  
Lynda Circo\*  
Marilyn White Corwin+  
The Daniel Rosenblatt Foundation  
Elmer's Custom Amish Furniture\*  
Thomas Fischer+  
Joseph and Janice Flaherty\*  
Larry and Arline Galasso\*  
Elizabeth A. Geyer+  
Dot and George Gilman  
Georgianne and Douglas Gregg\*  
Sophia Gutherz\*  
William and Eva Guyton  
Marion and John Harrison+\*  
William and Heidi Hipp  
Patricia Hipp  
Paul Jeselsohn and Francis Dubois  
Cast of Joseph and the Amazing Technicolor  
Dreamcoat\*  
Otto and Ruth Kirschner+\*  
Kolb Mechanical  
Terry and Marion Latham\*  
Demetrio Laveglia  
Lisa Linden and Lloyd Kaplan  
Loomis Family  
In Honor of David Markel for his Kindness  
Leslie Luxemburg\*

Gerri Macwhinnie\*  
Gail Madden\*  
Michael Manuelian and Gregory Welch+\*  
Joey and Dave+  
Mattituck Community Fund\*  
Rev and Mrs. Donald McKinney\*  
Richard Mizdal\*  
Virginia Motto\*  
Nancy Motto\*  
North Fork Drywall & Insulation\*  
Alison O'Reilly  
Marjorie Petras\*  
Christopher Pia  
Harold Prince in honor of Peg Murray  
The Quinn Family+  
Mary and Henry Raynor\*  
Robert and Linda Reymann\*  
Bette and Art Ross  
Eileen Sheldon+  
Edward and Carol Sieban\*  
Cast of Songs We Love  
Southold Rotary  
Michael Stafford  
Diane and Doug Stark  
Marion E. Stark  
Marjory Stevens in Memory of Judy Utter\*  
Cora Stoll\*  
George and Lynn Summers\*  
John and Carol Talmage\*  
Cast of The Sound of Music  
Alicia Thompson+  
Janet Thompson  
Theodora Velys  
Germaine Vindigni\*  
Mary Vines+  
Lillian M. Wagner-Dykhuis+\*  
Virginia Ward\*  
Arthur J. Wilks III

### STARS

Acting Out Loud In Memory of Todd Bibey+  
The Greg and Michele Adams Gift Fund  
Jeffrey Andrade\*  
Suzanne Auer\*  
Barth's Pharmacy  
Jean Bearak  
Scott Bennett

#### + Cornerstone Donors

All donation levels are cumulative for the *Building on Tradition* Campaign.

\* Indicates that a donation has been made this year (July 2013 through September 2014.)  
For donation levels under \$250, only those who have donated since July 2013 are listed.

#### + Cornerstone Donors

All donation levels are cumulative for the *Building on Tradition* Campaign.

\* Indicates that a donation has been made this year (July 2013 through September 2014.)  
For donation levels under \$250, only those who have donated since July 2013 are listed.



## Thank You To Our Donors

Peter Berger\*  
 Edward Booth\*  
 Alex Boukas DDS  
 Howard and Judy Brandenstein  
 A. Elaine Breese In Memory of Syd Breese+  
 Terry Brockbank+  
 Rosemary Gabriel and Patrick Calkins\*  
 Kurt Carstensen+  
 Anne Howard and Mort Cogen  
 Paula and Michael Croteau+  
 Heather Cusack+  
 Maureen Deegan+  
 Phyllis and Jim Dennehy  
 Victor and Barbara DiPaola\*  
 Cathy, Wayne and Amy Dries+  
 James and Mary Ellen Duffy  
 Jo-Ann Mastronardi Ferrigno\*  
 Thomas Geppel and Carol Festa  
 Ruth and Harry Fiumaro\*  
 Iona & Gerald Flamm\*  
 Donna Foster  
 Thomas Geppel\*  
 Nancy Gilbert\*  
 The Gilvary Family+  
 Lyn Goldstein and Christine Rendel  
 Gramercy Vineyards+  
 Robert and Anna Guarriello\*  
 Raymond and Deborah Gurriere  
 Ed and Monica Harbes  
 Legends Restaurant\*  
 Janet Gay Hawkins  
 Elliott Hecht & Local Union #3 IBEW  
 John and Sarah Henry  
 James Hillis  
 William Hipp and Maureen Nelson  
 Cameron Hipp  
 Anderson Speed Hipp+  
 Richard Hom\*  
 Raven Janoski+  
 Herman Jenich\*  
 Micky Kalich\*  
 Joseph and Catherine Keiser+  
 John and Patrice Keitt+  
 Steve and Clara Kentrotas\*  
 David and Carol Kirby+  
 Mr. Thomas Lentini\*  
 Elliot and Fran Levine

Kac Lieblein  
 Betty Lind in Memory of Jim Barney  
 Larry and Flo Liso+  
 Long Island Cauliflower Association  
 JoAnne and Robert Maddalena\*  
 Mary Ann and Joseph Martorano+  
 Eileen McCarroll  
 Doris and Ronald McGreevy\*  
 John Page and Joe McKay  
 The Minogue Family\*  
 James and Diana Minogue  
 Margaret Moloney  
 Pat and Liz Moloney  
 Tom Monsell  
 Angela Monsell+  
 Jane Wilson Morton  
 Peg Murray  
 Richard and Patricia O'Brien  
 Sylvia Pafenyk\*  
 John Parkin  
 Sharon Patterson\*  
 Peconic Landing  
 The Pfizer Foundation Matching Gifts Program  
 The Hon. and Mrs. C. Raymond Radigan\*  
 Jake and Fran Reichert  
 Rising Sun Woodworking  
 Karen and Greg Rivara  
 Riverhead Adventures, LLC\*  
 Riverhead Faculty and Community Theatre+  
 Francis and Patricia Roberts\*  
 Barbara and Sherwood Robinson  
 Susannah Rosato  
 In Memory of Dorothy F Kimball+  
 Cathy, Dan and Marissa Russo\*  
 Holly Sanford  
 Jessica Scheer  
 Kimberly Scheer  
 Alfred Scherzer\*  
 Maureen Shea  
 Jim and Joan Sheehan+  
 Laurel Sisson\*  
 The Sisson Family+  
 Joseph J. Snellenburg II+  
 Southold Town PBA  
 Patricia Speed\*  
 Mr. and Mrs. John Stack+  
 Jane Sweeney

### + Cornerstone Donors

All donation levels are cumulative for the *Building on Tradition* Campaign.

\* Indicates that a donation has been made this year (July 2013 through September 2014.)

For donation levels under \$250, only those who have donated since July 2013 are listed.

## Thank You To Our Donors

Raymond Terry\*  
 Polly Ketcham Thurm+  
 Katherine Torney  
 Dr. Arnold and Liselotte Urist\*  
 Lucille Viscardi  
 Marguerite Volonts\*  
 Carol & Martin Walicki\*  
 Carl and Marilyn Weaver\*  
 Marcia and Arthur Weinberg\*  
 Wells Fargo Sharing Advantage  
 Contribution and the Kalich Family  
 Jeff Wentz+  
 Alice Wise  
 Betty Wivchar\*  
 Ed and Sue Zaborowski  
 In Memory of Judy Utter  
 Sasha and Michael Zolik  
 Dorothy Zondag\*

### FEATURED PERFORMERS

Glenn Abramowitz\*  
 Rusty Ackroyd in memory of Bob Ackroyd\*  
 Donna Albano\*  
 Barbara Amrhein\*  
 Gini McLaughlin and Jerry Avolio\*  
 Annette Bednosky and George Sanlucci\*  
 Robert and Johanna Boergesson\*  
 Claire Bouffard\*  
 John Casey\*  
 Lorene Custer and Jeff Greenberger\*  
 Tom Del Prete and Manning Dandridge\*  
 William and Mary Dewey\*  
 Barbara Diachun\*  
 Betsey Dickerson\*  
 Suzanne and David Fujita\*  
 Ann Marie Galasso\*  
 Arline Galasso\*  
 John and Carole Garvey\*  
 Bernard Gillespie\*  
 William and Susan Graf\*  
 Holli Haerr\*  
 Lawrence B. Heit\*  
 Roberta Hering\*  
 Julie Hoffman\*  
 The Hooper-Gwiazda Family\*  
 Esther H Hunt\*  
 Allyn and Debra Jackson\*

Paul and Monica Jacques\*  
 Gayle and Micah Kaplan\*  
 Dick Keogh, In the Name of Judy Utter\*  
 Susan and Robert King\*  
 Doreen and Donald Kirby\*  
 Martin and Christine Kosmynka\*  
 Steve Krise\*  
 Jane and Al Kropp\*  
 Jo Ann Kujawski, In Memory of Judy Utter\*  
 Lydia Lajda\*  
 Virginia Lammers\*  
 Julie Lane\*  
 Jim and Carol Lee\*  
 Dr. & Mrs. Levine\*  
 Elizabeth Liszanckie\*  
 Gary Lukachinski\*  
 Lawrence and Marion Marks\*  
 Thomas J McCarthy Real Estate\*  
 Norm and Linda McCullough\*  
 Jan and Charlie McGoey\*  
 Genevieve McGrath\*  
 William McLaughlin\*  
 Cindy Methven\*  
 Brenda Momente\*  
 Dennis Mueller\*  
 Toni and Frank and Sam Notaro\*  
 Rich and Nancy Olsen-Harbach\*  
 Sherry Powers\*  
 Cheryl Reich\*  
 Joel and Anne Reitman\*  
 Ann Ristuccia\*  
 Patsy Rogers\*  
 Michelle Roussan\*  
 Edward and Harriet Safran  
 In honor of Jed Clauss\*  
 Arthur Satz\*  
 Fred & Harriette Schecter\*  
 John and Barbara Severini\*  
 Adele Silverio\*  
 Brian and Sonia Stamm in Memory of James Minogue\*  
 Rod, Cathy and Christina Stankewicz\*  
 Sarah Stevens\*  
 Lawrence Strickland\*  
 Charles and Marie-Louise Stringfellow\*  
 Millie and Tom Toivonen\*  
 Donya VanBuren\*

### + Cornerstone Donors

All donation levels are cumulative for the *Building on Tradition* Campaign.

\* Indicates that a donation has been made this year (July 2013 through September 2014.)

For donation levels under \$250, only those who have donated since July 2013 are listed.



## Thank You To Our Donors

David Wetsell\*  
John and Audrey Whalen\*  
Emily Whitney\*  
Martha Williams\*

### PLAYERS

Linda Aydinian\*  
Pat Berger\*  
Robert Bracken\*  
Carol Brewer\*  
Mona Browne\*  
John and Linda Callahan\*  
Valerie Card\*  
Denis Cheshire\*  
Rita Cohen\*  
Pete and Sandy Coleman  
    In honor of Jed Clauss\*  
Ellen Corey\*  
Rose Marie Davanzo\*  
Bernadette Deerkoski\*  
Eleanor DeReeder\*  
Marie Elena Lynch Dobert\*  
Susan Krupski Fisher\*  
Ronald and Marilyn Gallagher\*  
Thomas and Lucille Harvey\*  
Jessie and Edward Hertling\*  
Don Higgins\*  
Karen and Brownell Johnston\*  
Ruth Z. Kassner\*  
Lea Kendall\*  
Keith and Barbara Lewin\*  
Allan Longo\*  
Martha Mazzaferro\*  
Charlie and Marsha Millnew  
    In honor of Jed Clauss\*  
Mary and Mike Mraz\*  
Sue and Bert Mulholland\*  
Mark Phillips and Paul Novello\*  
Anne Pavlak\*  
C Ratsey\*  
Michael and Shannon Simon\*  
Elinor J. Spohn\*  
The Wedding Singer cast  
    In honor of the production team\*  
Jean Trojanoski\*  
Robert and Genevieve Yeomans\*

### ENSEMBLE

Lynn and John Amato\*  
Jane Babinsky\*  
Mary Jo Bailey\*  
Linda Bartunck\*  
Catherine Carey\*  
Deb Conrardy\*  
William F Coster\*  
Linda Cotton\*  
Leonard and Beryl Dank\*  
Pat DeRidder\*  
Marie Dickerson\*  
Margaret Dooley\*  
Thomas Dougherty\*  
Edward Flanagan\*  
Jane Flinter\*  
Neil Forrest\*  
Maura Frankman\*  
Muriel Frochlich\*  
Lucinda Hemmick\*  
Tom and Jerri Henske\*  
James Esseks\*  
Ronda and Joseph Lauria  
    In Memory of Jerry Minogue\*  
Mr and Mrs Charles and Mabel Ley\*  
Kevin Lilly\*  
Heather Loria\*  
Marilyn Marschean\*  
Bonnie Mazzaferro\*  
Heidi Mccarthy\*  
Donald and Julie McKinney\*  
Frank and Terry Midulla\*  
Amanda Mouzakes\*  
Rose Pannini\*  
Bernhard Peters\*  
Robert Profeta\*  
Bernard Ramis\*  
Rizza Jr Family Trust\*  
Zenus Robert\*  
Christine Schmitt\*  
Ray Scutari\*  
Anne Shannon\*  
Robert Vestigio\*  
Martin Wasicki\*  
Waters Crest Winery\*

## 2014-2015 NFCT Membership

Barbara Ackerman  
Advanced Technical Materials  
Bernadette and George Aldcroft  
Doris Alfano  
Danielle Allen  
The Andes Family  
Jeffrey Andrade and family  
Pat Hunt and family  
Ann Mallouk and family  
Corinne Areano  
Lois Atkinson  
Joan Au and family  
Suzanne Auer  
Gini McLaughlin and Jerry Avolio  
Mary Jo Bailey  
Mr. and Mrs. Albert Barbero, Jr.  
Evelyn Bergen  
Peter Berger  
Robert and Johanna Boergesson  
Val and Bill Boergesson  
Irene Bradley and Family  
Carol Brewer  
Steven Brickman and Family  
Terry Brockbank  
Agnes (Nora) Busch  
Sydney Campbell  
Renee Carey  
Victoria Carroll  
Kelly Lynn Cassidy  
Brett Chizever  
Cynthia Stapon Cichanowicz & Family  
Lynda Circo  
Gabrielle Comanda  
Marilyn Corwin  
Linda Cotton  
John Curtis  
Heather Cusack  
Lisa Dabrowski  
Eleanor deRedder  
Tom Del Prete and Manning Dandridge  
Leonard and Beryl Dank  
Shirley Darling  
Rose Marie Davanzo

Nancy Deegan  
Phyllis and Jim Dennehy  
Nancy DiGirolamo  
Victor and Barbara DiPaola  
Riley Dobbins  
Marie Elena Lynch Dobert and family  
Michael Drozd  
Diane P. Fabian  
Connor Federico  
Thomas Geppel and Carol Festa  
Lily Filippatos  
James Fink  
Thomas and Joann Fischer  
Mr. David Fisher  
Susan Krupski Fisher  
Mally Fogarty  
Arline Galasso and family  
Gayle Gammon  
Anne Gilvarry  
William and Susan Graf  
Georgianne and Douglas Gregg  
Sophia Guthertz and family  
John Henry  
Norma Hinsch  
Michael Hipp, Kimet Speed and Family  
Julie Hoffman  
Robert Horn and Family  
Michael Horn  
Eric Hughes  
Shauna Huizing  
Paul and Monica Jacques  
Raven Janoski  
Mary and Nathan Kalich  
Cynthia Kaminsky  
Robert Kaplan  
Ruth Z. Kassner  
Colleen Kelly  
Lea Kendall  
Steve and Clara Kentrotas  
Susan and Robert King  
Jo Ann Kujawski  
Lydia Lajda  
Richard F. and Patricia Lark

### + Cornerstone Donors

All donation levels are cumulative for the *Building on Tradition* Campaign.

\* Indicates that a donation has been made this year (July 2013 through September 2014.)  
For donation levels under \$250, only those who have donated since July 2013 are listed.

The NFCT Membership runs from July 2014 through June 2015. To renew your membership, or to become a member, please see the back cover.



## 2014-2015 NFCT Membership

Marion Latham  
 Mr Charles Ley  
 Devin Lilly  
 Theresa Linder  
 Elizabeth Liszanckie  
 Heather Loria  
 John and Katrina Lovett  
 Leslie Luxemburg  
 Gerri Macwhinnie and family  
 Dee and Willy Martin  
 Daniel McCarthy  
 Caroline McCartin  
 Matt Senese and Steve McCoy  
 Marie and Eddie McDonald  
 Jan McGoey  
 Doris McGreevy  
 Rev and Mrs. Donald McKinney  
 William McLaughlin  
 Michele Messinger and family  
 Brenda Momente and Family  
 Virginia Motto  
 Nancy Motto  
 Dale and Stacey Moyer  
 Sam Notaro  
 Anne Pavlak  
 Laura and Jim Pearsall  
 Tony Peraza  
 Diane Peterson and Family  
 Marjorie Petras  
 Sherry Powers  
 Lucille Purcell  
 Jake and Fran Reichert  
 Maryanne Rempel and Family  
 Linda and Bruce Reymann  
 Doug and Jean Richards  
 Karl Riesterer and family  
 Tina Roache  
 Zenus Robert  
 Lois Ross and family  
 Catherine and Dan Russo  
 Ellie Salmaggi  
 Aria Saltini  
 Bill and Maureen Sanok

Michelle and David Scheer and Family  
 Charlie and Marilee Scheer  
 Ruth Schwartz  
 Eileen Sheldon  
 Joseph Sieczka  
 Adele Silverio  
 Laurel Sisson  
 Lauren and Mark Sisson  
 Heather and Ro Sluyters  
 Thornton and Sherry Smith  
 Joseph J. Snellenburg II  
 Patricia Speed  
 Christina Stankewicz  
 Marjory Stevens  
 Peggy Straub  
 John and Carol Talmage  
 Alicia Thompson and family  
 Jon Troiano  
 Millie and Tom Toivonen  
 Matthew Tuthill  
 Haley Unger  
 Scott and Patti Verity  
 Germaine Vindigni and family  
 Lillian M. Wagner-Dykhuys  
 Pat Wall  
 Pat Ward  
 Carl and Marilyn Weaver  
 Marie Werner  
 David Wetsell and family  
 John and Audrey Whalen  
 Mr. and Mrs. Robert White  
 Emily Whitney  
 Margaret Wuestman  
 Donald and Evelyn Wylie  
 Robert and Genevieve Yeomans  
 Mary and Gene Yourch  
 Ryan Zlatniski

The NFCT Membership runs from July 2014 through June 2015. To renew your membership, or to become a member, please see the back cover.

## the VILLAGE CHEESE Shop



631.298.8556  
 Love Lane • Mattituck

Open til 7:45pm  
 by reservation only,  
 on the Friday and Saturday  
 nights of NFCT performances

## Great Building Projects Start with Quality Building Materials

**RIVERHEAD**  
 BUILDING SUPPLY  
 Build Smarter. Build Better.

rbscorp.com  
 1-800-378-3650



WINDOWS DOORS HARDWARE MOLDING WOOD FLOORING



# ***BUILDING ON TRADITION CAMPAIGN***

Thank you for helping to *Build on the Tradition* of over 56 years of live theatre on the North Fork. In the fall of 2012, the NFCT purchased our "Home Sweet Home," the building we have called home for over 50 years. Last year, Emilie and Michael Corey kick-started a Renovation Campaign: to renovate the building. They will match all donations up to \$300,000 through December 31, 2015. Please consider making a donation today. You can help by volunteering (e-mail [campaign@nfct.com](mailto:campaign@nfct.com) or call Mary Motto Kalich at 917-334-6639) or by making a tax deductible contribution at [www.nfct.com](http://www.nfct.com).

## **DONATION LEVELS**

### **BUILDING ON TRADITION COMMITTEE:**

- CHAIRMAN** .....\$50,000+
- GOLD MEMBER** .....\$25,000-\$49,999
- SILVER MEMBER**.....\$15,000-\$24,999



- 1% CLUB** ..... \$7500-\$14,999



- ANGELS** .....\$5000-\$7499
- BENEFACTORS** .....\$2500-\$4999
- PRODUCERS** ..... \$1000-\$2499
- DIRECTORS** ..... \$500-\$999
- STARS** ..... \$250-\$499
- FEATURED PERFORMERS**.....\$100-\$249
- PLAYERS**.....\$50-\$99
- ENSEMBLE** ..... \$25-\$49

Check below to become a member of NFCT.

- INDIVIDUAL MEMBERSHIP** ..... \$10
- FAMILY MEMBERSHIP**..... \$20  
(Membership for one year from July 1, 2014 - June 30, 2015)

Name \_\_\_\_\_

Address \_\_\_\_\_

City/State/Zip \_\_\_\_\_

Phone \_\_\_\_\_ E-mail \_\_\_\_\_

Total Amount Enclosed \_\_\_\_\_

Mail To NFCT, PO BOX 86, MATTITUCK, NY 11952