

The
North Fork Community
Theatre

Presents
A Play

by
Arthur
Miller

The
Price



January
1972

Peter B.

THE PRODUCER

The producer in the North Fork Community Theatre is the chief executive officer for the play production. He or she decides who will do what, selects cajoles and works with the various committees and crafts to put the whole show together. The directors want different props, the producer sees that the prop crew finds them. The many, many details are all in the hands of the producer. We also ask the producer to worry about the money, to keep expenses down and work if possible within a budget set by the Board of Directors. It is a big job but it is one chance to find out how the whole business of theatre works.

McMANN - PRICE AGENCY INSURANCE

Call "Bill" Price

238 Main Street

Greenport, N. Y.

Tel. 477-1680

GOLDSMITH'S BOAT SHOP, INC.

EVINRUDE MOTORS

Stamas Boats — M. F. G. Boats

Duranautic Boats

Pioneer Chain Saws

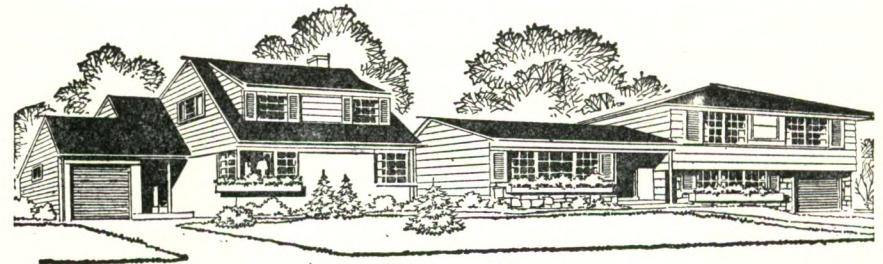
Southold

New York

516 765-1600

THE GOOD LIFE

Electricity has helped bring the good life to Long Island. Hand in hand with the responsibility to meet this demand for electricity is the obligation to protect our Island's natural resources. At LILCO, continuous checks by engineers, marine biologists, air-sampling technicians and ecologists are environmental projects that go on day after day. Concern for Long Island's environment has a direct bearing on the decisions we make in operating our power plants, landscaping our substations and on being a good neighbor in the communities where our installations are located. At LILCO, we put a lot of effort into the protection of Long Island's environment.



LILCO
LONG ISLAND LIGHTING

AN INVESTOR-OWNED, TAXPAYING COMPANY

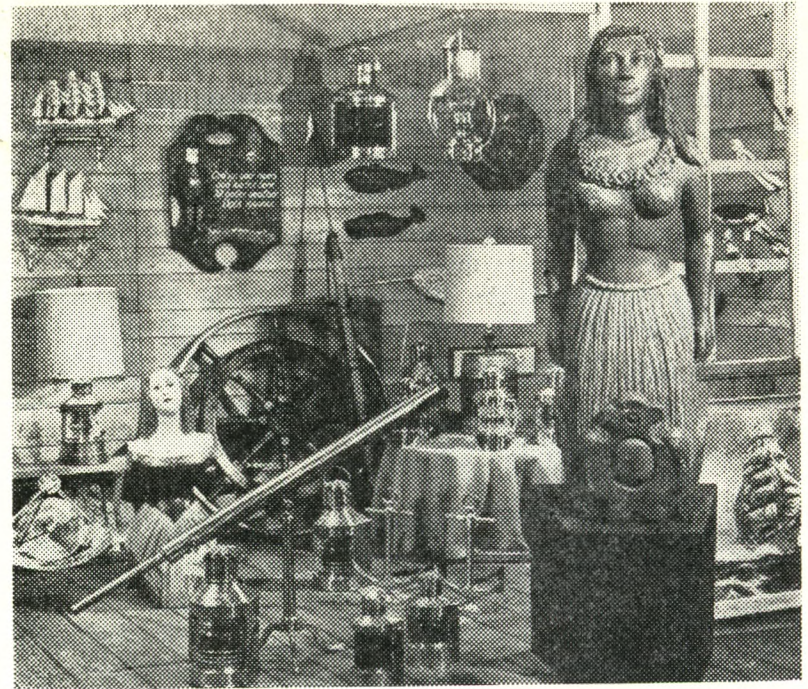
NATIONAL HUMANITIES SERIES

"A More Perfect Union" is the theme—name of the series of performances and meetings the four members of the National Humanities Series group will be giving on the North Fork on January 17, 18, and 19th. The main performance will be Wednesday, January 19th at the Riverhead Junior High School. The NFCT audience is urged to come.

The East End of Long Island and the North Fork should be honored by the fact that this series has returned to us for the third year. At a past performance - discussion held at the North Fork Theatre, the director of the series was most impressed by the response his groups had received. The Series is produced by the Woodrow Wilson Foundation and is funded by the National Endowment for the Humanities. The group will be meeting in schools, churches, and in private homes for discussions and partial performances with children, teachers and housewives. The group which came in October were concerned with "A Sense of Place" while this one is concerned with the diversity of the people who form America. The panel has a diversity which well reflects that of the country.

Plans are being made to form a local council for the arts and humanities which will coordinate the activities of groups interested in these areas so that there will be little conflict in dates and a central information and ticket handling agency. Of more immediate need is the raising of funds to support the appearance in the local area. To this end a fund-raising cocktail party, on Jan. 16, is being hosted by Dr. and Mrs. Jerome Rogers, Basket Neck Lane, Remsenburg. The donation is \$5.00 per person. For further information please call Mrs. Rogers at 325-0797 or Mrs. Charles Smith at 298-4300.

The NFCT hopes you will support this fine example cultural enrichment for our area and we would urge you to tell your friends who will not be seeing "The Price" until its second weekend.



A STORE for THOSE WHO LOVE SHIPS and the SEA

For Your Boat:

One of the **LARGEST** and **MOST COMPLETE** stocks of marine supplies in Eastern Long Island

Nautical Items for your home:

- SHIP MODELS ● FIGUREHEADS
- NAUTICAL PRINTS & PICTURES
- COPPER SHIP'S LIGHTS ● MODEL BRASS CANNONS
- ESKIMO CARVINGS ● HANDCRAFTED POTTERY

PRESTON'S
at Main Street Wharf
Greenport, Long Island, N.Y.

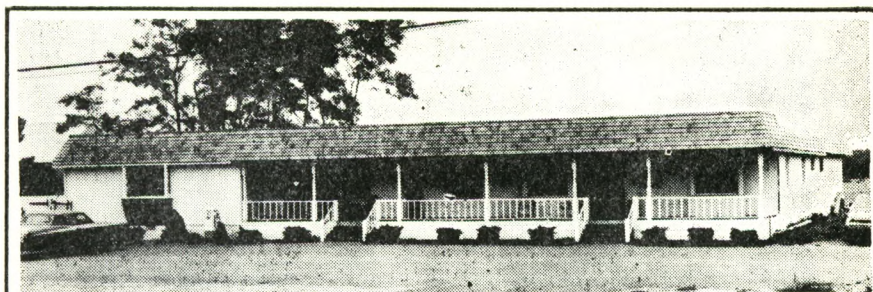
11944

Tel: 516 477-1990

Since 1882

THE DIRECTOR

The director of any show is in the position of making artistic decisions. He is the one who has to read the script and decide how it will be presented on the stage. He has a view in his mind as to what the setting should look like, he has to decide how the actors will get on and off the acting area, he has to contrive the "business" which occupies the actors movements and helps set their role. And in the last analysis it is the director who has the last word on how all the details of the production are going to appear on the stage.




Come on in and see what we have done with the Old Sprout Packing House . . . now a Beautiful Setting in which to shop for a Fine Portrait, a Picture of your Home, a New Camera or Slide Projector, Movie Equipment, or have your Films, Slides or Movie Film Processed by experts at *ARTHUR AVEDON'S Photography Studio and Camera Shop*. - - - or go next door to *GIFTS & GOODIES & GADGETS*, where you will find the most unusual presentation of Gifts, Home Decorations, Home Bar Supplies, Greeting Cards, and "Believe It or Not" *A PENNY CANDY DEPARTMENT* that features over a hundred varieties of Candies . . . just like the ones you used to buy!

Arthur Avedon

AND
**GIFTS & GOODIES
& GADGETS**

Located in the "SHOPS OF OLD NORTH ROAD BUILDING" on North Road (Route 27) just west of Horton's Lane in the village of Southold, N. Y.

'Full Service Bank' is our other name!

The NORTH FORK
... BANK & TRUST CO. ...
MATTITUCK CUTCHOGUE  SOUTHOLD GREENPORT
JAMESPORT
SHELTER ISLAND HEIGHTS

Member F.D.I.C.

COLONIAL VILLAGE AT SOUTHOLD

One and two bedroom Garden Apartments, Permanent living for persons of mature age in a private community nestled in the heart of the charming historic Village of Southold. Short walk to shops, churches, etc.

Main St. At Ann's Way
Southold, New York

Tel. 765-3436

SALON de GOUBEAUD

Southold

hope and connie's gift mart

Unusual Gifts
and Accessories

— Handcrafts —

477-1515 Main St.
Greenport



THE ASSISTANT DIRECTOR

For the purpose of both helping the director and to provide an opportunity to learn that task each show has an Assistant Director. Someone may want to see how the parts are blocked, how the entrances and exits are planned and by being the director's right hand man there is a good chance to see it all done. In our theatre the assistant most often holds the "book" and cues the actors when they need it both during the rehearsals and during the show. This role gives the actors someone to fall back on if they happen to go blank just as someone else comes on stage.

The friendly home town organization
staffed and managed by your neighbors

NORTHPORT



federal savings
& LOAN ASSOCIATION

NORTHPORT

RIVERHEAD

COMMACK

Party Favors
Table Decorations
All Occasions



WORKSHOP
GIFT SHOP

125 Roanoke Ave.
Riverhead, 727-7251

Made by and for the benefit
of retarded adults

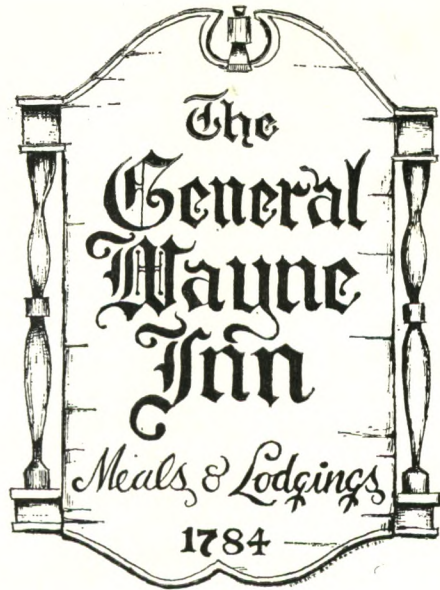
The
Suffolk Weekly Times

Printing & Publishing

Greenport, N. Y.

Since 1857

Official Paper For
Town Of Southold
Village of Greenport



Luncheon
Dinner
Supper

Music
Weekends

End Of Bayview Rd.
Southold

765-5544

THE STAGE MANAGER

The actual operating manager of the stage during the performance is the stage manager. He has to see that the sets are right, the furniture is in place and the lights, sound and actors are ready to go. He controls the curtain and decides when everything is set to start. During rehearsals he organizes the stage crew and coordinates their movements so that the shifts are made silently and efficiently. Travelers have to cross on his cue and the tables and chairs all have to end up in the right positions. During the intermissions he keeps track of the time and calls the actors and technicians back to work when the curtain is ready to go up again.

Eastern Suffolk's First Radio Station
And Still Number ONE

WRIV

1390 AM RADIO

RIVERHEAD

LONG ISLAND, N. Y.

FROHNHOEFER

- Lamp Mounting
- Repairs • Gifts

Lighting Fixtures
Lamps and Shades

Main Road Southold

NORTH FORK CATERERS



- Dinners
- Weddings
- Banquets

P. O. Box 832

Southold

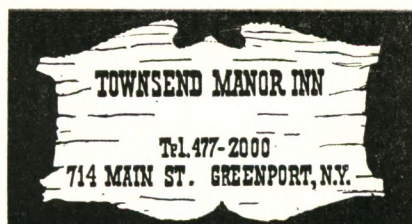
Cutchogue

734-6993

THE MIDDLE MAY SHOP
MAIN RD. SOUTHOLD L.I. 516-765-1028
HAS  **EVERYTHING!**
FOR BABIES
FOR BOYS TO SIZE 8
& GIRLS TO SIZE 14  OPEN DAILY
10 To 5

BOATMEN'S HARBOR MARINA

Dock Space To 50'
Marine Supplies
Gulf Oil Products
Bait, Tackle



● Restaurant ● Hotel-Marina
Cocktail Lounge ● Swimming Pool

Rothman's
DEPARTMENT STORE
GENERAL ELECTRIC
APPLIANCES & TELEVISION

"THE FINEST IN
MERCHANDISE and SERVICE"

THE SET DESIGNER

After reading through the script someone with a flare for the artistic and also a sound knowledge of the limitations of our stage will say they want to design the set for a certain show. The script usually gives a good description of what was done on Broadway and may even have a diagram showing the types and locations of doors, windows, fireplaces, whatever. But the set designer has to temper this with what will fit on our stage and what will fit our budget. We have little room for moving scenery and rather cramped quarters. Those of you who have seen many shows know that the ingenuity of our stage designers is really great.

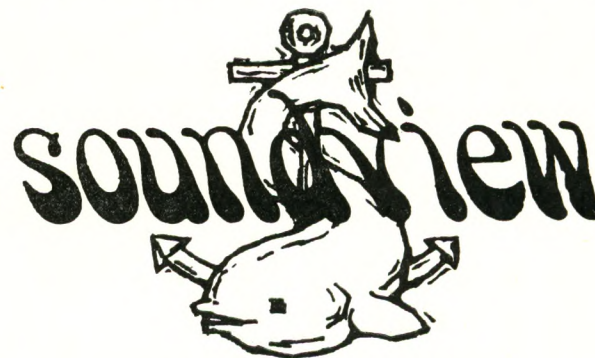
Compliments Of VILLAGE LIQUOR STORE

Lorraine DeAlbertis

HARBOR CRAFTS
Main Street ● Greenport
near the docks

A most unusual shop
featuring original art-
work and hand-crafted
articles designed and
created by the youth of
Southold Town.
Come in and browse

*Overlooking Beautiful Long Island Sound
The Wonderful World Of The . . .*



Open For Your Dining Pleasure
Breakfast 8 To 11:30 — Luncheon 12 To 3
Dinner 3 to 10

Intimate Cocktail Lounge

OUR SPECIALTIES:

- Fried Seafood
- Delicious King Sized Steaks
- Prime Ribs
- Roast Long Island Duck

BANQUET FACILITIES
FOR SOCIAL AND BUSINESS
FUNCTIONS IN OUR NEW
"HURRICANE ROOM"
INQUIRIES INVITED

BURT DAVIS AT THE PIANO
For Cocktails And After Dinner
Join the Sing-Along Crowd In
The Intimate Cocktail Lounge
Every Night Except Monday
And Tuesday.

For Reservations 477-9840 or 477-0666

**KITCHEN NOW UNDER SUPERVISION OF
EXPERIENCED LOCAL CHEF**

Closed Mondays



A little goes a long way.

Don Wald's

Autohaus

CORP.

ROUTE 58
RIVERHEAD, L. I., NEW YORK

SET CONSTRUCTION

The crew that wants to work on the stage putting the designers ideas to practice has the chance to be as many trades as they want. There are carpenters, painters, riggers, and even a plumber on some occasions. All the flats must be made, the doors set and made to work smoothly, windows to install and stairs and such to put together. For the handyman it is a most satisfying task and the sooner it is all put together the easier it will be for the actors to learn their movements and pull the show together.

"See The Man From Valley National"

FOR ALL YOUR BANKING NEEDS

VALLEY NATIONAL BANK

OF LONG ISLAND

22 Offices Serving All of:
Suffolk and Nassau

Greenport

Member F. D. I. C.



DRESSES - LOUNGE-WEAR
LINGERIE

Leisurely
Yours
by
Judith

FOR THAT
SPECIAL
Look Of LEISURE
For You And Yours

Hours 10:00 to 5:00

Southold, L. I.

Tel. 765-1660

HART HARDWARE

WALLPAPER

Largest Selection On
North Fork

Southold

765-2122

HARRY SMITH

& SON

INSURANCE AGENCY
LIFE — LIABILITY
AUTO — MARINE
COMPENSATION — FIRE

Main Street Southold, N. Y.
Phone 765-3180

Mattituck Plumbing & Heating Corp.

- We sell
 - We install
 - We guarantee
- 298-8393

THE NEWS

NEW YORK'S PICTURE NEWSPAPER

HOME DELIVERED
DAILY & SUNDAY

734-6525

727-3939

KEN WIEGAND Cutchogue
AUTHORIZED NEWS DEALER
PECONIC NEWS DELIVERY



Southold

765-3131



Early American Homes

George Ahlers, Builder

CUTCHOGUE, N. Y.

WHO'S WHO IN THE CAST

JUDY UTTER — Esther Franz

While associated with the Nassau Women's Club Drama Department, Judy has played in "Kind Lady", "The Emperor's New Clothes", "Desk Set", "Children of the Moon", and several one act plays. She won an "Oscar" for her performance as Mrs. Novaks in "The Drop of a Hat" in a competition held by the Long Island Federation of Women's Clubs. Since joining NFCT she has performed in the part of Norah in "Auntie Mame" and also worked backstage.



Compliments

Of

**LO STACK
LEO STACK**

WHO'S WHO IN THE CAST

HAL YOUNG — Gregory Solomon

So many of you have seen Hal in so many shows it is hard to do credit to all his skills and activities. As a set designer and builder he has done fine work with "The Mousetrap", "My Three Angels", and "Haunting of Hill House". He has two favorite roles from his acting repertoire, Petruccio in "Kiss Me Kate" and Quixote in "Man of La Mancha". But he has also acted and sung, and danced, and clowned and been dramatically serious in no less than eleven of the shows listed in our box office lobby. A fine record for anyone.

Van Deusen, Inc.

**CHOICE
WINES &
LIQUORS**

*Domestic & Imported
We Deliver*

Phone 298-8400

Pike Street

Mattituck

Opposite Railroad Station

COLONIAL
DRUGS
GREENPORT

OPEN

MONDAY THRU SATURDAY
8:30 A. M. - 9:00 P. M.

SUNDAYS
9:00 A. M. - 2:00 P. M.



The Place For:

- Fantastic Fabrics
- Coordinated Trims
- Top-Flite Patterns
- Butterick
- Vogue
- Simplicity

Greenport (Opp. Post Office)

THE NORTH FORK
COMMUNITY THEATRE

Presents

The Price

By ARTHUR MILLER

(By special permission of Dramatists Play Service, Inc.)

THE CAST

Judy Utter ESTHER FRANZ
Don Hamblin VICTOR FRANZ
Jack Moffat WALTER FRANZ
Hal Young GREGORY SOLOMON

THE PLACE

The attic floor of a Manhattan brownstone

THE TIME

Today

Silkworth
INC.

REAL ESTATE & INSURANCE

ANNOUNCING OUR 58th
ANNIVERSARY

OVER A HALF CENTURY OF
SERVICE, 1913 — 1971

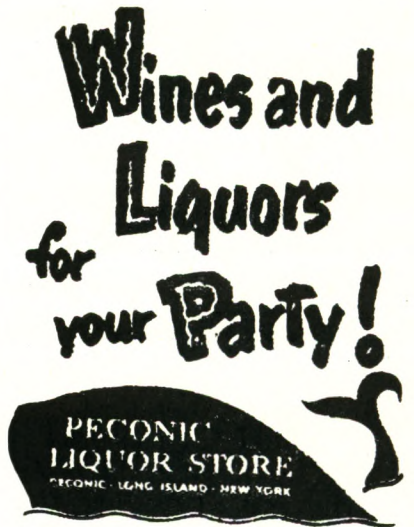
Realistic Value Listings

Always Welcome

OFFICE - MAIN ROAD

MATTITUCK

Tel. 298-4747



765-3260

SANDRA SCOPPETTONE — Director

In 1961, Ms. Scoppettone published her first book, "Suzuki Beane" — Doubleday which has been optioned many times over for films and television. And once again is projected for a TV series in 1972-73. Her second book, for children "Bang, Bang, You're Dead" was published in 1968 by Harper and Row.

In 1968 she turned to the theater, TV, and films. She has had several plays produced Off-Off-Broadway, has sold a screenplay to Warner Brothers, has written the CBS soap opera, "Where The Heart Is", and this past summer her first musical comedy was filmed in New York City. It will be released in 1972 under the title, "Scarecrow In A Garden of Cucumbers". She is presently working on a new screenplay for the producers of "Scarecrow" and will have a full length play, "Stuck", produced at the Actors Studio in February, where she is a member of the Playwrights Unit. A one-act play, "The Inspector of Stairs", will be published by Breakthrough Press this year. Ms. Scoppettone is a newcomer to directing and has been at it only one year. She has directed plays at the Cubiculo Theater, The Assembly, and Theatre 10009 in New York. They have all been original, untried plays and she welcomes the experience of directing a play by an established writer.

Ms. Scoppettone is also connected with Elissa Books, the new shop at 85 Beckwith Avenue, Southold.

O'Keefe Chevrolet - Olds Inc.

Route 25

RIVERHEAD, N. Y.

I. M. Young & Co.

Division Of
Lebanon Chemical Corporation
Riverhead, N. Y.

**OYSTERPONDS
HISTORICAL
SOCIETY**

VILLAGE LANE, ORIENT

OLDSMOBILE HEADQUARTERS!

VOLINSKI OLDS, INC.

OLDSMOBILE

SALES & SERVICE

Value Rated Used Cars

Long Term Leasing

TRAVELER ST., SOUTHOLD

765-3523

WHO'S WHO IN THE CAST

JACK MOFFAT — Walter Franz

Since Jack first joined the NFCT in 1960 when he played in "Romanoff and Juliet", he has been perhaps the most active member. He has had some active part in 30 of the 42 shows the theatre group has been showing the community. He has of course written three shows, "Peanut Butter Prince", "There Comes A Time", and "Jack in the Box". He has directed four of our musicals and three of the dramas. And as for the acting roles it is hard to pick out the many special performances he has done but we liked "Night Must Fall", "Glass Menagerie", and our first musical, "Guys and Dolls".

**FOR ALL THE
BANKING HELP
YOU NEED, ASK YOUR
SECURITY MONEY MAN.**

Security National Bank 

MEMBER FDIC BRANCHES THROUGHOUT LONG ISLAND MAIN OFFICE HUNTINGTON, N.Y.

**SOUTHOLD PHARMACY
SOUTHOLD**

*"Small Enough To Know You
Large Enough To Serve You"*

Don Scott

Bill Golder

**HOPPY'S
CLEANERS**

- Storage ● Laundry
- Rug Cleaning ● Tailoring

Front St.

Greenport

*GOLDIN FURNITURE CO.
GREENPORT CARPET CO.*

- Furniture All Descriptions
- Bedding By Sealy
- Broadloom Carpet

477-0940

434 Main St.

Greenport

**TWIN FORK
FENCE CO., INC.**

*All types of fencing —
Fiberglass reinforced
Plastic coated chain link,
picket, and post & rail fences*

Route 27A 298-4777 Mattituck

**SMITH & RYSKO
Fuel Oil Co., Inc.**

765-3698

If no answer call!

734-6328

MAIN STREET

SOUTHOLD

L. I.

PRODUCTION STAFF
"THE PRICE"

Assistant Director Bob Wall
 Stage Manager Chuck Bondi
 Set Construction Art Wilks, Bob Brown
 Set Decoration Chuck Bondi, Mary Register, Joan Vatis,
 Bill Hess, John Ashton, Dick Winters,
 Chris Register, Bob Wall
 Lights Bob Ackroyd, Maureen Cahill
 Costumes Mary Register
 Props Cindy Ackroyd
 Make-up Maureen Moffat, Mary Register
 House Manager Marion Beaton
 Program Editor Syd Breese
 Cover Design Peter Breese
 Tickets Anne Richmond
 Publicity Bob Ackroyd
 Hospitality Diane Detrich

SPECIAL THANKS

The Hermitage

VAIL BROS.



Sales and Service

Carl Vail

Herb Wells



WHEELERS GARAGE

GENERAL AUTO REPAIRS

Joe Wheeler, Prop.
 Southold, N. Y. 11971

Phone 765-3542
 Res. 765-3906

*An Old
 Colonial Landmark*

**THE
 SOUTHOLD INN**

• Luncheon • Dinner
 • Cocktail Lounge
 Main Rd., Southold 765-2656

**The Elbow Room
 Restaurant**

722-8975

**Main Road, Jamesport
 Cliff's Elbow Too!**

298-8925

Main Road, Laurel

MORCHEL SHEET METAL INC.



HEATING AND AIR CONDITIONING
MAIN ROAD
MATTITUCK, N. Y. 11952
298-9122 OR 298-4428

WHO'S WHO IN THE CAST

DON HAMBLIN — Victor Franz

Don made his debut with the NFCT when he appeared as the Innkeeper in "Man of La Mancha". He has had previous experience over the years appearing as the Captain in "The Terrible Meek" by Charles Rann Kennedy, Trinity Church, Windsor, Conn. as well as in Wethersfield. In his capacity as minister to the Methodist churches in Greenport and Orient he has had many opportunities to organize and direct plays, pageants and variety shows. Going further back he was a drama student at Lafayette College after an active participation in dramatic activities during his high school years.

Tel. 477-1906

FLEET LUMBER INC.

"For Good Measure"

ROUTE 25 GREENPORT

Professional Sound Installers & Systems

DON FISHER
GARY WILLIAMS

765-3654 - 3577
Southold

Your Local Community Bank THE SUFFOLK COUNTY NATIONAL BANK

Cor. of 2nd St. & Roanoke Ave.

RIVERHEAD, NEW YORK

Montauk Highway
HAMPTON BAYS

Route 25-A & Manor Road
WADING RIVER
Ample Parking

Drive-in Windows

MEMBER F. D. I. C.

Mullen Motors, Inc.

CHRYSLER — PLYMOUTH

Sales & Service

East Main St. Southold, N. Y.

Tel. 765-3564



RIVERHEAD SAVINGS BANK

RIVERHEAD • LAKE GROVE • EAST NORTHPORT

MEMBER
FEDERAL DEPOSIT INSURANCE CORPORATION

LIGHTING — Special Effects

This department sets the mood for the show by giving visual body to the sets and furnishings. The time of day the sound effects which help set the scene are all in the hands of the electricians and sound men. Here is a chance to be creative and use ingenuity and skill to translate the effects the author and director want into the actual working on the stage. The moonlit outdoors, a cosy living room, and back and forth; all these come into the work of this group.

*Congratulations
From*

**RAYNOR-SUTER
HARDWARE, INC.**

Formerly J. Duryee's

"THE BIG STORE
SINCE 1925"

Love Lane, Mattituck

298-8420

**WENDY
FABRIC SHOP**

*Slipcovers & Custom
Made Drapes To Order*

Route 58 — Riverhead
727-3525

Compliments of
GREENPORT

I G A

WLNG

RADIO

AM & FM

Sag Harbor

Barker's

Pharmacy, Inc.

MATTITUCK, N. Y.

Val Stype Agency

INSURANCE

REAL ESTATE

298-8481	734-5111
298-4554	734-6172
Mattituck	Cutchogue



Arcade Telephone: 477 1440
Dept
Store
FRONT, MAIN and ADAMS STREET, GREENPORT

PROPERTIES

One of the most exasperating jobs of the theater may be heading up properties. Even the simplest script seems to call for hundreds of odd items which seemingly very natural to the story are sometimes awfully hard to find. The little items the actors carry in their hands or have to find on the hall table are all collected by the prop crew and what is more important they are put in the right places at the beginning of each act so the actor will have them when needed. If you enter the theatre through the old front door you will see all these items for the current show usually cluttering the area near the phone.



COMPLIMENTS OF
FIRST IN SUFFOLK - Established 1858
**SOUTHOLD
SAVINGS BANK**
Main Street, Southold, N.Y.
New OLD TOWN OFFICE
Old Town Rd. at Nesconset H'way, Port Jefferson Sta., N.Y.
Member FDIC

COSTUMES

Most generally the ladies with the sewing talents are used in the department to translate clothing we may have already into the right item for the actor, or more often a search through the community for the clothing needed in any particular scene. We sometimes have rented special costumes but most often the costume crew has created or recreated the right gown or suit for the right time. In some of the more complicated shows such as "Man of La Mancha" it can be a formidable task.

FISHERMEN'S REST

Famous For

ITALIAN FOOD — PIZZA PIES

VEAL PARMESAN

CHICKEN CACCIATORA

SERVING LUNCHEONS — 11:30 to 4:00

DINNERS — 4:00 to 11:00

WEDNESDAY IS LADIES' DAY

MAIN ROAD

CUTCHOGUE, L. I.

734-5155

George Braun Oyster Co., Inc.

Peconic Bay Scallops — Wholesale Seafoods

734-6700

Main Road

Cutchogue

SPECIAL ACKNOWLEDGEMENT

The North Fork Community Theatre would like to express their special thanks to Mr. Peter Stack for the very excellent and continually useful collection of wigs which he has donated for the use of the theatre.

BLUE STONE STONE DUST

298-8828

*Raymond F. Nine
Sand & Gravel*

Box 1194 Mattituck

TOP SOIL

FILL

**Associated
Supermarket**

Second St. New Suffolk

Tel. 734-6567

An Individually Owned
Supermarket With Personal
Service

**GEORGE L. PENNY,
INC.**

LUMBER and

BUILDING MATERIALS

Over 75 Years of Building

Supply Service

MATTITUCK - GREENPORT

298-8559

477-0400

MARGERIE MOFFAT — Producer

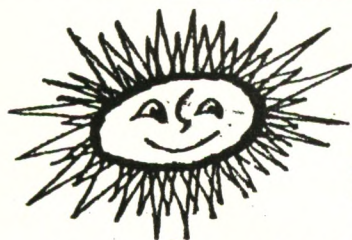
Marge has taken on many jobs this year. She just finished playing Agnes Gooch in "Auntie Mame", and she is the Secretary of the Theatre group as well and now producer. In previous shows, she has done props in "Thurber Carnival", stage crew for "The Little Moon of Albin", and "Haunting of Hill House", stage manager for "Man of La Mancha", and assistant director in "Bells Are Ringing". Her earlier experience was with The Upstages and Players, and the Utica Chorale during several years in upstate New York after her graduation from Southold High School.

**Eckert
Oil Service, Inc.**
FUEL OIL
BUDGET PLANS
Mattituck, L. I.
298-4197

Van's Hardware
DUTCH BOY PAINTS
Housewares & Garden Supplies
Greenport, N. Y.
477-0449

C. P. Tuthill, Inc.
Plumbing - Heating
Oil Burners
Quality Paints, Varnishes and Supplies
Water Systems
Tel. 734-6779

**Washington White's
Sons**
Hardware Marine Supplies
Paint Tools
120 Main Street, Greenport, N. Y.
Telephone 477-0317



Something to give
to Somebody Special
(... and don't forget yourself)
... a vacation in the sun. Let us do
the arranging for you. We'll plan a bright
vacation to fit your mood and budget.

Greenport Travel Agency, Inc.
120 Front Street 477-0777

MAKE - UP

The art of creating the character in age and hair style to make the actor fit the role. With dye and eye shadow, powder and paint the age is transformed, facial features enhanced or reduced and the coloring set so the actor looks right under the lights. All actors must use some make-up even if they want to look like themselves because the stage lighting is harsh and is always a different color than the daylight in which we most often see people. The make-up crew helps the actors achieve the right effect.

**MITCHELL'S RESTAURANT
HOTEL & MARINA**
GREENPORT, N. Y.

**THE LONG ISLAND TRAVELER
MATTITUCK WATCHMAN**
"HOME NEWSPAPER OF THE NORTH FORK"
SOUTHOLD, N. Y.

REAL ESTATE & INSURANCE

**Russell P. Silleck
Agency**
Main Street Cutchogue, N. Y.
734-6472
If no answer call 734-6024
Flora S. Luce Walter F. Luce

**Reeve Lumber &
Woodworking Co., Inc.**
MATTITUCK 298-4711
MILLWORK
PAINTS
LUMBER
HARDWARE

SWEZEY'S

YOUR DEPARTMENT STORES
IN SUFFOLK
111 E. Main St.
Riverhead
1 W. Main St.
Patchogue
Open Mon. & Fri. Nites
Til 9 P. M.

SOUTHOLD DODGE

Robert E. Sayre, Prop.
AUTHORIZED
SALES AND SERVICE
DODGE — DART
USED CARS - TRUCKS
Main Street, Southold

NORTH FORK SHIPYARD

The North Fork's Largest and Fastest Growing Boat Sales and Service Offers Everything For The Yachtsman.

See Us For All Your Boating Needs.

CONCORDE FIBERGLASS—27 ft. to 47 ft.

LUHRS SEA SKIFFS — Fiberglass 25 ft. to 44 ft.

MANSON — Motor Yachts — 34 ft. to 65 ft.

SEA RAY — Fiberglass Boats — 15 ft. to 24 ft.

DELL QUAY DORY'S

USED BOATS

MARINE STORE

SERVICE

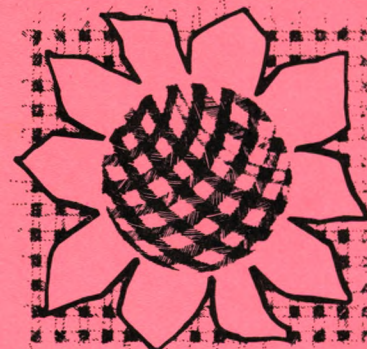
STORAGE

*Visit Our Galley-Ho Restaurant —
Overlooking Peconic Bay.*

Located at Foot of Main St., New Suffolk

734-6330 — 734-6350

ELISSA



85 Beckwith Ave.
Southold, N. Y.
765-3315

"When you sell a man a book
you don't sell him just 12
ounces of paper and ink and
glue—you sell him a whole
new life."
Christopher Morley (1890-)

BOOKS