

Friends Rainbow



1972



The Carriage House Restaurant



MAIN ROAD

SOUTHOLD, L. I.

Serving Fine...
Food and Spirits

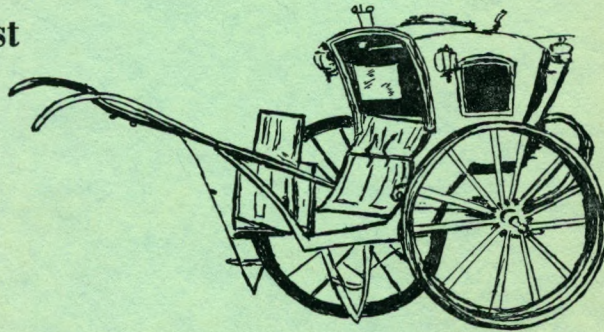
After The Show

Join The Cast

At The

Piano

Bar



Jack Moffat

At The Keyboard Friday & Saturday

765-2111

(Closed Tuesdays)

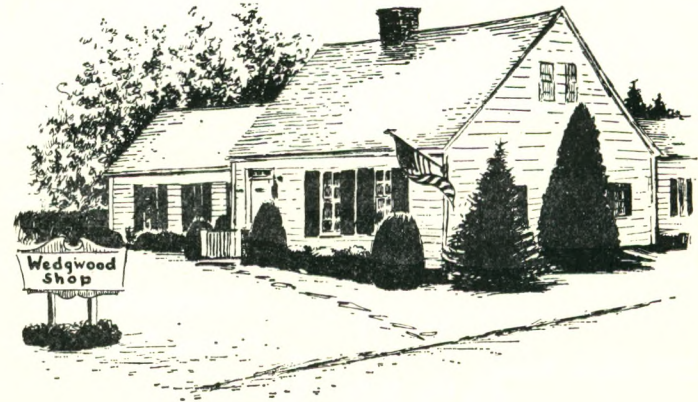
FIRE NOTICE

The exits of the theatre are marked by EXIT signs. Please look for the one nearest you when you are seated. In case of fire proceed to the nearest exit under the direction of the theatre staff.

LOOKING TOWARD NEXT YEAR

The membership and the Board of Directors of the North Fork Community Theatre want to continue to give the audiences of our community a varying fare of plays, drama, comedies and musicals. The by-laws were recently changed to try to make the selection of plays a little more responsive to the wishes of the whole group and to widen the scope of plays that are being considered for future seasons. The play reading committee has been reading and discussing plays representing all types of theater. The time may have come for us to break out of the pattern of comedy, drama, musical which has marked most of the seasons efforts in Mattituck. Certainly "The Price" was a step toward more difficult work for the actors and more satisfying experience of theater for the audience.

(Continued on Page 2)



The Wedgwood Shop

Famous For Unusual Gift Selections

LOOKING TOWARD NEXT YEAR

(Continued from Page 1)

In this program we are asking the audience to give us some idea as to what they might want to see. There are several plays which the committee has been considering for which there are short synopsis in the program. Also in the program is a ballot and suggestion card on which we would like you to record your opinions and suggestions. Will you please leave the card at the box office, give it to an usher, or a theater member. We will use all these to help in the selection for future programs and hope that you will continue to patronize the theater. We always need an audience.

McMANN - PRICE AGENCY INSURANCE

Call "Bill" Price

238 Main Street

Greenport, N. Y.

Tel. 477-1680

GOLDSMITH'S BOAT SHOP, INC.

EVINRUDE MOTORS

Stamas Boats — M. F. G. Boats

Duranautic Boats

Pioneer Chain Saws

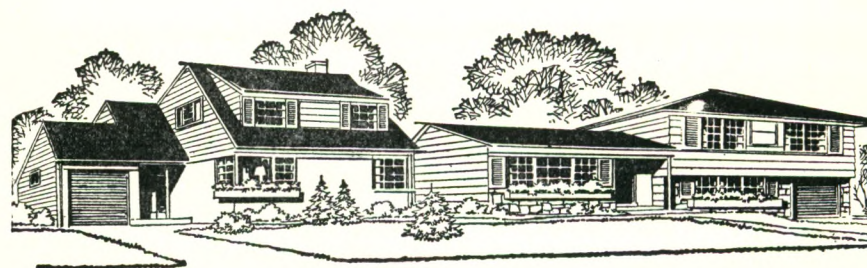
Southold

New York

516 765-1600

THE GOOD LIFE

Electricity has helped bring the good life to Long Island. Hand in hand with the responsibility to meet this demand for electricity is the obligation to protect our Island's natural resources. At LILCO, continuous checks by engineers, marine biologists, air-sampling technicians and ecologists are environmental projects that go on day after day. Concern for Long Island's environment has a direct bearing on the decisions we make in operating our power plants, landscaping our substations and on being a good neighbor in the communities where our installations are located. At LILCO, we put a lot of effort into the protection of Long Island's environment.



LILCO
LONG ISLAND LIGHTING
AN INVESTOR-OWNED, TAXPAYING COMPANY

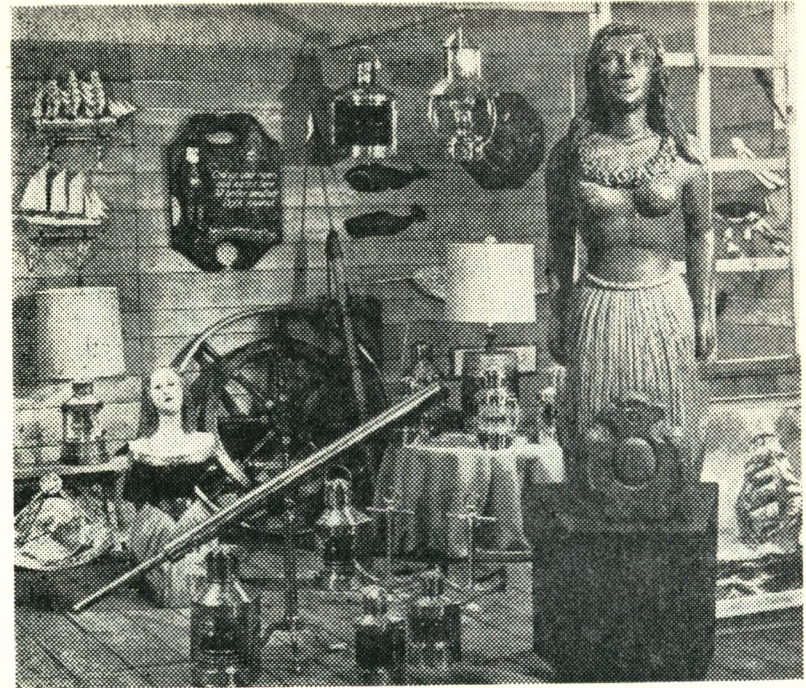
PRESIDENT'S STATEMENT

The production of "Finian's Rainbow" on Broadway in 1947 was greeted by rave reviews and a long run. In the 25 years that have passed, the world has changed and the attitudes of people have matured. In the context of the Broadway musical theatre, the sharecroppers and farm hands were happy-go-lucky folk fitting the stereotypes of the times.

In the intervening years, we have changed our outlook on the plights of negro and white sharecroppers, we find the shuffling obsequious appearance offensive to both blacks and whites. But the musical show still has fine songs and the type of essentially inconsequential story line which made it popular in its day.

The North Fork Community Theatre chose to put on this production. It lives up to the technical and performance standards that we have tried to maintain. We do not want the characters or the lines to be offensive to anyone. Rather we would like to think our audiences would accept the show in the spirit in which it was first produced and would see it as a lesson to be learned. We have matured and increased in understanding and we can look on the show as an example of what was done a long time ago and learn from it that indeed we are in a new world.

DICK WINTERS



A STORE for THOSE WHO LOVE SHIPS and the SEA

For Your Boat:

One of the **LARGEST** and **MOST COMPLETE** stocks of marine supplies in Eastern Long Island

Nautical Items for your home:

- SHIP MODELS ● FIGUREHEADS
- NAUTICAL PRINTS & PICTURES
- COPPER SHIP'S LIGHTS ● MODEL BRASS CANNONS
- ESKIMO CARVINGS ● HANDCRAFTED POTTERY

PRESTON'S
at Main Street Wharf
Greenport, Long Island, N.Y.

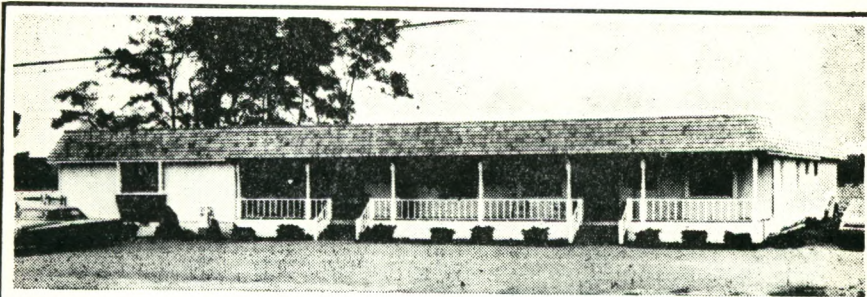
11944

Tel: 516 477-1990

Since 1882

DANNY LARSEN — Sunny

Danny joins two other members of the family, Mary and Kathy in the production of "Finian's Rainbow". He has a part also in the lighting crew for the show. His previous experience has been in school plays and he has an impressive list of other activities with Boy Scouts, sports and a newspaper route.



Come on in and see what we have done with the Old Sprout Packing House . . . now a Beautiful Setting in which to shop for a Fine Portrait, a Picture of your Home, a New Camera or Slide Projector, Movie Equipment, or have your Films, Slides or Movie Film Processed by experts at *ARTHUR AVEDON'S Photography Studio and Camera Shop*. - - - or go next door to *GIFTS & GOODIES & GADGETS*, where you will find the most unusual presentation of Gifts, Home Decorations, Home Bar Supplies, Greeting Cards, and "Believe It or Not" A *PENNY CANDY DEPARTMENT* that features over a hundred varieties of Candies . . . just like the ones you used to buy!

Arthur Avedon

AND
**GIFTS & GOODIES
& GADGETS**

Located in the "SHOPS OF OLD NORTH ROAD BUILDING" on North Road (Route 27) just west of Horton's Lane in the village of Southold, N. Y.

**'Full Service Bank'
is our other name!**

The NORTH FORK
... BANK & TRUST CO. ...

MATTITUCK
CUTCHOGUE



SOUTHOLD
GREENPORT

JAMESPORT
SHELTER ISLAND HEIGHTS

Member F.D.I.C.

**COLONIAL
VILLAGE AT
SOUTHOLD**

One and two bedroom Garden Apartments, Permanent living for persons of mature age in a private community nestled in the heart of the charming historic Village of Southold. Short walk to shops, churches, etc.

Main St. At Ann's Way
Southold, New York

Tel. 765-3436

SALON de GOUBEAUD

Southold

**hope and connie's
gift mart**

**Unusual Gifts
and Accessories**

— Handcrafts —

477-1515 Main St.
Greenport



JOHN TAPNER — Buzz Collins

A student at Southold High School, John is appearing for the first time with the NFCT. He has previously been on stage in the "Music Man", "Up the Down Staircase", and most recently in "Once Upon a Mattress".

DWAYNE RHODES — Sheriff

Dwayne is a resident of Mattituck and is making his first appearance on our stage. He joins many other newcomers in this production.

The friendly home town organization
staffed and managed by your neighbors

NORTHPORT



federal savings
& LOAN ASSOCIATION

NORTHPORT

RIVERHEAD

COMMACK

Party Favors
Table Decorations
All Occasions



WORKSHOP
GIFT SHOP

125 Roanoke Ave.
Riverhead, 727-7251

Made by and for the benefit
of retarded adults

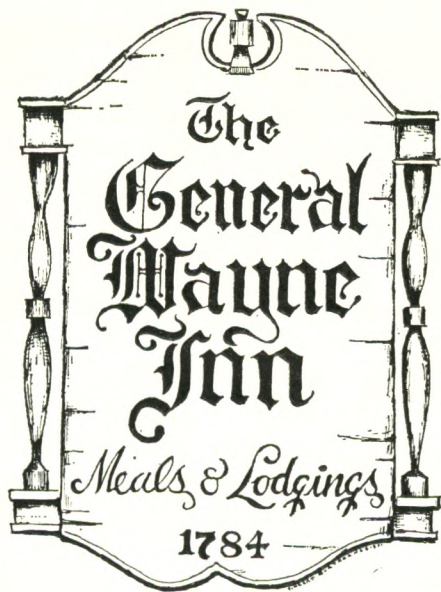
The
Suffolk Weekly Times

Printing & Publishing

Greenport, N. Y.

Since 1857

Official Paper For
Town Of Southold
Village of Greenport



Luncheon
Dinner
Supper

Music
Weekends

End Of Bayview Rd.
Southold

765-5544

KATHLEEN McGRATH — Susan Mahoney

Kathleen comes to us from Westhampton Beach and lists credits with Theatre IX in New York City such as: "Kiss Me Kate", "Music Man", "Guys and Dolls". "Where's Charley", "Bells Are Ringing" and "Pajama Game". This is her first appearance with the NFCT.

JOHN ASHTON — Finian McLonergan

John has combined acting with his regular job as trust officer of the North Fork Bank and Trust Co. He first appeared in "Man of La Mancha" as Anselmo, the Captain of the Inquisition and followed that as Brian O'Bannion in "Auntie Mame". He did an admirable job with the awards for "The Price".

Eastern Suffolk's First Radio Station
And Still Number ONE

WRIV

1390 AM RADIO

RIVERHEAD

LONG ISLAND, N. Y.

FROHNHOEFER

- Lamp Mounting
- Repairs • Gifts

Lighting Fixtures
Lamps and Shades

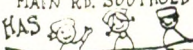

Main Road Southold

NORTH FORK CATERERS

- Dinners
- Weddings
- Banquets

P. O. Box 832

Southold

THE MIDDLEMAY SHOP
MAIN RD. SOUTHOLD L.I. 516-765-1628
HAS  EVERYTHING!
FOX BABIES
FOR BOYS TO SIZE 8
& GIRLS TO SIZE 14
 OPEN DAILY
10 TO 5

BOATMEN'S HARBOR MARINA

Dock Space To 50'
Marine Supplies
Gulf Oil Products
Bait, Tackle

Cutchogue

734-6993



● Restaurant ● Hotel-Marina
Cocktail Lounge ● Swimming Pool

Rothman's
DEPARTMENT STORE
GENERAL ELECTRIC
APPLIANCES & TELEVISION

"THE FINEST IN
MERCHANDISE and SERVICE"

JOSEPH NOLAN — Woody

Joe keeps coming back for more, having been in the chorus of "Bells Are Ringing", a stagehand in "The Haunting of Hill House", the barber in "Man of La Mancha", and the floorwalker in "Auntie Mame". His wife and five children live with him in Cutchogue.

GEORGIA O'CONNOR — Sharon McLonergan

Georgia has been moving to a principal role by being in the chorus of "Belis Are Ringing", working on props for both "The Odd Couple", and "Auntie Mame" and by playing "Antonia" in "The Man of La Mancha". She and her family live on Glenn Road in Southold.

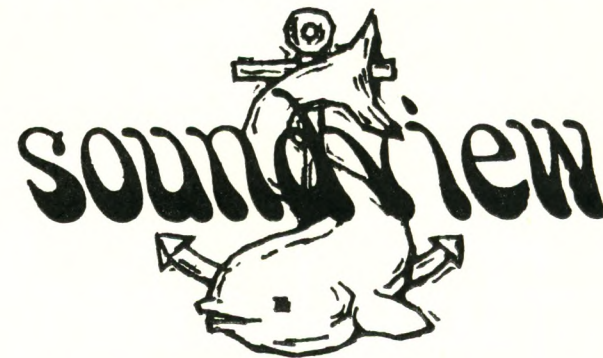
Compliments
Of
VILLAGE LIQUOR
STORE

Lorraine DeAlbertis

HARBOR CRAFTS
Main Street ● Greenport
near the docks

A most unusual shop
featuring original art-
work and hand-crafted
articles designed and
created by the youth of
Southold Town.
Come in and browse

Overlooking Beautiful Long Island Sound
The Wonderful World Of The . . .



Open For Your Dining Pleasure
Breakfast 8 To 11:30 — Luncheon 12 To 3
Dinner 3 to 10

Intimate Cocktail Lounge

OUR SPECIALTIES:

- Fried Seafood
- Prime Ribs
- Delicious King Sized Steaks
- Roast Long Island Duck

BANQUET FACILITIES
FOR SOCIAL AND BUSINESS
FUNCTIONS IN OUR NEW
"HURRICANE ROOM"
INQUIRIES INVITED

BURT DAVIS AT THE PIANO
For Cocktails And After Dinner
Join the Sing-Along Crowd In
The Intimate Cocktail Lounge
Every Night Except Monday
And Tuesday.

For Reservations 477-9840 or 477-0666

KITCHEN NOW UNDER SUPERVISION OF
EXPERIENCED LOCAL CHEF

Closed Mondays



A little goes a long way.

Don Wald's

Autohaus
CORP.

ROUTE 58

RIVERHEAD, L. I., NEW YORK

KENNETH NELSON — John (The Preacher), Howard Gospeleer

Ken has a good background for all these parts since he is the assistant pastor of the AME Goodwill Zion Church in Riverhead as well as a soloist with Gospel and Spiritual singing groups. He has previously played the part of Nathan in "The Man Nobody Saw".

BOB ACKROYD — Og

It would seem that each show finds Bob in another good part. In "Finians" he sings. Before this he has been a comedian in "The Odd Couple", a dramatic actor in "The Little Moon of Alban". He produced and played in "The Little Foxes", produced "Man of La Mancha", was stage manager for "The Haunting of Hill House", and he still finds time this year to be publicity man for the NFCT.

"See The Man From Valley National"
FOR ALL YOUR BANKING NEEDS
VALLEY NATIONAL BANK

OF LONG ISLAND
22 Offices Serving All of:
Suffolk and Nassau

Greenport

Member F. D. I. C.



DRESSES - LOUNGE-WEAR
LINGERIE

Leisurely
Yours
by
Judith

FOR THAT
SPECIAL
Look Of LEISURE
For You And Yours

Hours 10:00 to 5:00

Southold, L. I.

Tel. 765-1660

HART HARDWARE

WALLPAPER

Largest Selection On
North Fork

Southold

765-2122

**HARRY SMITH
& SON**

INSURANCE AGENCY
LIFE — LIABILITY
AUTO — MARINE
COMPENSATION — FIRE

Main Street Southold, N. Y.
Phone 765-3180

**Mattituck Plumbing
& Heating Corp.**

- We sell
 - We install
 - We guarantee
- 298-8393

THE NEWS

NEW YORK'S PICTURE NEWSPAPER

HOME DELIVERED
DAILY & SUNDAY

734-6525

727-3939

KEN WIEGAND Cutchogue
AUTHORIZED NEWS DEALER
PECONIC NEWS DELIVERY

ROWBOATS TO SHOWBOATS...
Ulrich Marine
LARGEST DISPLAY ON EASTERN I.I.

Southold

765-3131



Early American Homes

George Ahlers, Builder

CUTCHOGUE, N. Y.

DON HAMBLIN — Senator Billboard Rawkins

The acting bug has infected Don and he is back on stage again. Our last show "The Price" was the vehicle for Don's extremely sensitive and moving performance as the disillusioned and life-weary policeman. That acting was preceded by the part of the Innkeeper in "Man of La Mancha", the first part Don had with NFCT. He has lots of experience with staging and directing in connection with his ministerial duties at Greenport Methodist Church.

DICK WINTERS — Producer, Mr. Robust

With this show the NFCT has had to enlist the services of its president as producer. In the original plan of the organization it stated that the president would normally be the producer of the plays when there was no one else to do the job. Such was the case. Dick is also in a cameo role to add to his activity for the group.



Compliments

Of

LO STACK
LEO STACK

Van Deusen, Inc.

CHOICE
 WINES &
 LIQUORS

Domestic & Imported

We Deliver

Phone 298-8400

Pike Street

Mattituck

Opposite Railroad Station

BEN and MAUREEN BURNS — Directors

It was perfectly reasonable to think that one day Ben and Maureen would volunteer to direct a musical show for the NFCT. They have been loyal members for many years and have been performing in musical programs throughout the community. They were instrumental in making the local performance of "Jesus Christ, Superstar" at the Southold High School one of the most striking theatrical experiences on the North Fork. Ben is the minister of the Southold Methodist Church.

**COLONIAL
DRUGS
GREENPORT**

OPEN

MONDAY THRU SATURDAY
8:30 A. M. - 9:00 P. M.

SUNDAYS
9:00 A. M. - 2:00 P. M.



The Place For:

- *Fantastic Fabrics*
- *Coordinated Trims*
- *Top-Flite Patterns*
- Butterick*
- Vogue*
- Simplicity*

Greenport (Opp. Post Office)

**THE NORTH FORK
COMMUNITY THEATRE**

Presents

Finian's Rainbow

By E. Y. HARBURG and FRED SAIDY

Produced by special arrangement with
Tams-Witmark Music Library

Directors—Ben and Maureen Burns Producer—Dick Winters

CAST

SUNNY Danny Larsen
 BUZZ COLLINS John Tapner
 SHERIFF Dwayne Rhodes
 FIRST SHARECROPPER John Cornell
 SECOND SHARECROPPER Alice Dart
 SUSAN MAHONEY Kathleen McGrath
 HENRY Alan Alexander
 THIRD SHARECROPPER Deidre Nolan
 FINIAN McLONERGAN John Ashton
 SHARON McLONERGAN Georgia O'Connor
 WOODY MAHONEY Joseph Nolan
 OG Bob Ackroyd
 HOWARD Kenneth Nelson
 SEN. BILLBOARD RAWKINS Don Hamblin
 TWO GEOLOGISTS Kayo Crump, Mark Dickerson
 DIANA Cheryl Burns
 JANE Jeanne Cahill
 HONEY LOU Beth Cahill
 JOHN (The Preacher) Kenneth Nelson
 MR. ROBUST Dick Winters
 MR. SHEARS Bill Price
 GOSPELEERS Ben Burns, Kenneth Nelson
 DEPUTIES Roger Stoutenburgh, Mark Dickerson,
 Chris Wacker
 CHORUS Jane Ashton, Brad Burns,
 Cheryl Burns, Beth Cahill, Dennis Cahill, Jeanne Cahill,
 Maureen Cahill, Benny Cobb, John Cornell, Alice Dart,
 George Grattan, Pam Greinke, Dianna Hairston, Jennie
 Heuschele, Sue Koster, Kathy Larsen, Mary Larsen,
 Andrew Levin, Patricia McCabe, Patricia Milford,
 Mark Warrington, Sandra Wells



REAL ESTATE & INSURANCE

ANNOUNCING OUR 58th
ANNIVERSARY

OVER A HALF CENTURY OF
SERVICE, 1913 — 1971

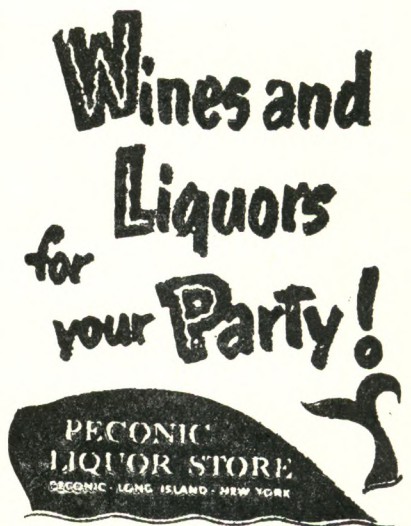
Realistic Value Listings

Always Welcome

OFFICE - MAIN ROAD

MATTITUCK

Tel. 298-4747



765-3260

Finian's Rainbow takes place in a fertile valley in the mythical state of Missitucky.

ACT 1

Scene 1—Rainbow Valley meeting place.

Song—This Time of Year — Sharecroppers
Song—How Are Things In Glocca Morra — Susan
Song—Look To The Rainbow — Susan

Scene 2—Nighttime in the Meeting Place.

Song—Old Devil Moon -- Woody

Scene 3—Estate of Senator Billboard Rawkins

Scene 4—The Meeting Place, next afternoon.

Song—Something Sort Of Grandish — Og, Sharon
Song—If This Isn't Love—Woody, Sharon, Finian
Reprise—Something Sort Of Grandish — Og

Scene 5—The Meeting Place, next afternoon.

Song—Necessity—Chorus, Sharecroppers
Song—That Great-Come-And-Get-It-Day — Woody
Sharon, Preacher

INTERMISSION

ACT 2

Scene 1—The Meeting Place, two weeks later.

Song—When The Idle Poor Become the Idle Rich—
Sharon

Scene 2—A Wooded Section.

Song—The Begat — Gspeleers, Rawkins

Scene 3—The Meeting Place, next day.

Scene 4—The Meeting Place, early next morning.

Song—When I'm Not Near The Girl I Love — Og
Reprise—If This Isn't Love—Sharon, Woody, Finian

O'Keefe Chevrolet - Olds Inc.

Route 25

RIVERHEAD, N. Y.

I. M. Young & Co.

Division Of
Lebanon Chemical Corporation
Riverhead, N. Y.

**OYSTERPONDS
HISTORICAL
SOCIETY**

VILLAGE LANE, ORIENT

OLDSMOBILE HEADQUARTERS!

**VOLINSKI OLDS, INC.
OLDSMOBILE**

SALES & SERVICE

Value Rated Used Cars

Long Term Leasing

TRAVELER ST., SOUTHOLD

765-3523

IN APPRECIATION

Space does not permit the publishing of short biographical notes on all the members of the cast and we do not want those who have not been included to feel badly. Without them there would be no show and the Chorus and Deputies and other smaller parts are all very much a contribution to the overall success and fun of a musical. To the families who have brought their children to all the rehearsals and to those who shared with them the work and excitement of putting together a complicated musical THANK YOU from us all.

**FOR ALL THE
BANKING HELP
YOU NEED, ASK YOUR
SECURITY MONEY MAN.**

Security National Bank 

MEMBER FDIC BRANCHES THROUGHOUT LONG ISLAND MAIN OFFICE HUNTINGTON, N.Y.

**SOUTHOLD PHARMACY
SOUTHOLD**

*"Small Enough To Know You
Large Enough To Serve You"*

Don Scott

Bill Golder

**HOPPY'S
CLEANERS**

- Storage • Laundry
- Rug Cleaning • Tailoring

Front St.

Greenport

**GOLDIN FURNITURE CO.
GREENPORT CARPET CO.**

- Furniture All Descriptions
- Bedding By Sealy
- Broadloom Carpet

477-0940

434 Main St.

Greenport

**TWIN FORK
FENCE CO., INC.**

*All types of fencing —
Fiberglass reinforced
Plastic coated chain link,
picket, and post & rail fences*
Route 27A 298-4777 Mattituck

**SMITH & RYSKO
Fuel Oil Co., Inc.**

765-3698

If no answer call!

734-6328

MAIN STREET

SOUTHOLD

L. I.

"FINIAN'S RAINBOW"

PRODUCTION STAFF

Accompanist Aldonn Norkus
 Choreography Maureen Cahill
 Set Design & Decoration John Osgood, Martie Conroy
 Set Construction William Hess, John Osgood, Hal Young
 Light Designer Richard Greenfield
 Lighting Crew William Bond, Richard Corovessis,
 Jay Clark, Mel Hubbard, Daniel Larsen, Thomas Larsen,
 Mark Stepnoski, William "Whoop"
 Technical Director William Bond
 Costume Designers Janet Freeman, Sophia Greenfield
 Costume Crew Tina Christie, Despina Dellis, Gloria Fultz,
 Penny Gloria, Betty Hagerman, Gail Horton,
 Mary Larsen, John Osgood, Barbara Martin,
 Marilyn Pontino, Pat Prahlow, Mary Register
 Make-Up Maureen Moffat, Lydia Pecora, Patricia Seaman
 Stage Manager Les Hart, Jr.
 Stage Crew Jim Andrews, David Cross, Eugene Cuomo,
 Henry Kislow, John Shearin
 Props Marion Beaton, Chairman,
 Fannie Behlen, Lucy Hanko, Kay Padavan
 House Manager Barbara Clay
 Ushers Laura Akscin, Donna Heine, James Helinski,
 Cathy Muzinic, Chris Register, JoAnne Szymanowski,
 Linda Szymanowski, Carol Trubenbach
 Hospitality Diane Detrich
 Publicity Robert Ackroyd
 Program Syd Breese
 Program Cover Melanie Wissemann
 Tickets Anne Richmond
 Box Office Penny Gloria
 Awards Clacia Young

SPECIAL THANKS to the following for their time and contributions in helping to make this production a success:

Eastern Long Island Hospital Opportunity Shop
 Wheeler's Garage Mr. Earl Fultz

VAIL BROS.



Sales and Service

Carl Vail

Herb Wells



WHEELERS GARAGE

GENERAL AUTO REPAIRS

Joe Wheeler, Prop.
 Southold, N. Y. 11971

Phone 765-3542
 Res. 765-3906

*An Old
 Colonial Landmark*
**THE
 SOUTHOLD INN**

- Luncheon • Dinner
- Cocktail Lounge

Main Rd., Southold 765-2656

**The Elbow Room
 Restaurant**

722-8975

**Main Road, Jamesport
 Cliff's Elbow Too!**

298-8925

Main Road, Laurel

MORCHEL SHEET METAL INC.



HEATING AND AIR CONDITIONING

MAIN ROAD

MATTITUCK, N. Y. 11952

298-9122 OR 298-4428

GHOSTS by Henrik Ibsen

"Ghosts" is a pinnacle in the annals of dramatic composition; the first successful example of symbolism in modern drama; the perfect fusion of past with present action; and one of the principal well-made plays of all time. The story is famous. Mrs. Alving's son returns for the dedication of the orphanage to Alving's memory. He starts a lusty flirtation with the maid, who, as we learn a little later, is the illegitimate daughter of Alving. The spectre of Alving is catching up with the present. The eulogies and memorials to him are ridiculous; for he was a drunken, lecherous man. The orphanage burns down; the maid runs off when she learns the truth; and Alving's son suffers a final attack of a dread disease. The ending is in the hands of Mrs. Alving a very famous role.

Tel. 477-1906

FLEET LUMBER INC.

"For Good Measure"

ROUTE 25

GREENPORT

Professional Sound Installers & Systems

DON FISHER
GARY WILLIAMS

765-3654 - 3577

Southold

Your Local Community Bank THE SUFFOLK COUNTY NATIONAL BANK

Cor. of 2nd St. & Roanoke Ave.

RIVERHEAD, NEW YORK

Montauk Highway

HAMPTON BAYS

Route 25-A & Maner Road

WADING RIVER

Ample Parking

Drive-in Windows

MEMBER F. D. I. C.

Mullen Motors, Inc.

CHRYSLER — PLYMOUTH

Sales & Service

East Main St. Southold, N. Y.

Tel. 765-3564



RIVERHEAD SAVINGS BANK

RIVERHEAD • LAKE GROVE • EAST NORTHPORT

MEMBER
FEDERAL DEPOSIT INSURANCE CORPORATION

STOP THE WORLD I WANT TO GET OFF

By Leslie Bricusse and Anthony Newley

Littlechap is every man but though he was more perspicacious than other men in the stupendous non-stop circus of life. He decides early to get rich, travel, and be extraordinary. He manages to do this by marrying the boss's daughter but there were other women in his life. He sees his wife Evie in the athletic form of Anya, the Russian, Ilsa, the German counterpart, and Ginnie, an American Girl. Finally at the end of his life he realizes his unkindness to Evie and sings "What Kind Of Fool Am I".

*Congratulations
From*

**RAYNOR-SUTER
HARDWARE, INC.**

Formerly J. Duryee's

"THE BIG STORE
SINCE 1925"

Love Lane, Mattituck

298-8420

**WENDY
FABRIC SHOP**

*Slipcovers & Custom
Made Drapes To Order*

Route 58 — Riverhead
727-3525

Compliments of
**GREENPORT
IGA**

WLNG

RADIO

AM & FM

Sag Harbor

**Barker's
Pharmacy, Inc.**

MATTITUCK, N. Y.

**Val Stype Agency
INSURANCE
REAL ESTATE**

298-8481	734-5111
298-4554	734-6172
Mattituck	Cutchogue

**LEWIS
REALTORS**
SO 5-3416
MAIN ROAD SOUTHOLD

Arcade Telephone 477 1440
Dept
Store
FRONT, MAIN and ADAMS STREET, GREENPORT

SEE HOW THEY RUN by Philip King

So swift is the action, so involved the situations, so rib-tickling the plot that audiences are left exhausted from laughter at the end. Galloping in and out of the four doors of an English vicarage are an American actor and actress (he is now stationed in England in the Air Force), a cockney maid, who has seen too many American movies, an old maid who tipples, four men in clergy outfits presenting the problem of which is which, for disguised as one is an escaped prisoner and a sedate Bishop who really can't believe it is all happening.



COMPLIMENTS OF

FIRST IN SUFFOLK — Established 1858

**SOUTHOLD
SAVINGS BANK**

Main Street, Southold, N.Y.

New OLD TOWN OFFICE

Old Town Rd. at Nesconset H'way, Port Jefferson Sta., N.Y.

Member FDIC

SPOON RIVER ANTHOLOGY by Charles Aidman

Conceived from Edgar Lee Masters "Spoon River Anthology"

Via musical interludes, we are introduced in a cemetery to the ghosts of those who were inhabitants of this town, and whose secrets have gone with them to the grave. There are 60-odd characterizations and vignettes in this continually interesting entertainment, offering an amazing variety of roles and impersonations for young lovers and preachers and teachers and many others. Both the sordid and the humorous sides of life are portrayed in fetching ballads and free verse form.

FISHERMEN'S REST

Famous For

ITALIAN FOOD — PIZZA PIES

VEAL PARMESAN

CHICKEN CACCIATORA

SERVING LUNCHEONS — 11:30 to 4:00

DINNERS — 4:00 to 11:00

WEDNESDAY IS LADIES' DAY

MAIN ROAD

CUTCHOGUE, L. I.

734-5155

George Braun Oyster Co., Inc.

Peconic Bay Scallops — Wholesale Seafoods

734-6700

Main Road

Cutchogue

DR. COOK'S GARDEN by Ira Levin

A gripping melodrama about a small town doctor who cannot bear to see his patients suffer from illness or end their lives in pain and misery. He discreetly and unethically does away with many of these "sufferers" and his conscience tells him he has done the right thing. Ultimately he is discovered by a young doctor who puts a stop to things with a twist of fate.

BLUE STONE STONE DUST

298-8828

*Raymond F. Nine
Sand & Gravel*

Box 1194 Mattituck

TOP SOIL FILL

**Associated
Supermarket**

Second St. New Suffolk
Tel. 734-6567

An Individually Owned
Supermarket With Personal
Service

**GEORGE L. PENNY,
INC.**

LUMBER and
BUILDING MATERIALS

Over 75 Years of Building
Supply Service

MATTITUCK - GREENPORT

298-8559

477-0400

CARNIVAL

A young lonely orphan girl wants to join the circus but is unsuccessful in several jobs. She is now living with a third rate group supported only by their memories. Lilli becomes the pawn in a fierce rivalry between a magician and a puppeteer. The magician's dance, sword, rose and cape highlight his personality while the puppeteer speaks to Lilli only through his dolls. Many well-known songs including "Lilli" and "Love Makes The World Go Round".

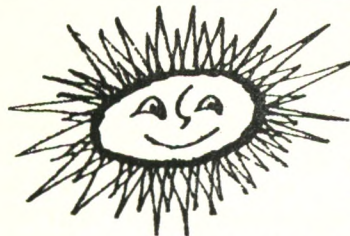
DIARY OF ANNE FRANK

Dramatized by Frances Goodrich and Albert Hackett, based upon the book; Anne Frank; Diary of a Young Girl

This play is based on the touching and tragic true story of ten innocent Jews driven into three years of terrified hiding by Nazi occupation and persecution during World War II. Forced to live in tiny attic rooms, these refugees find themselves prisoners of their own personal wants and needs as well as Nazi hatred. Especially, it is the story of Anne whose love of life and bursting adolescence refuses to succumb to the daily tensions.

**Eckert
Oil Service, Inc.**
FUEL OIL
BUDGET PLANS
Mattituck, L. I.
298-4197

C. P. Tuthill, Inc.
Plumbing - Heating
Oil Burners
Quality Paints, Varnishes and Supplies
Water Systems
Tel. 734-6779



Greenport Travel Agency, Inc.
120 Front Street 477-0777

Van's Hardware
DUTCH BOY PAINTS
Housewares & Garden Supplies
Greenport, N. Y.
477-0449

**Washington White's
Sons**
Hardware Marine Supplies
Paint Tools
120 Main Street, Greenport, N. Y.
Telephone 477-0317

Something to give
to Somebody Special
(. . . and don't forget yourself)
. . . a vacation in the sun. Let us do
the arranging for you. We'll plan a bright
vacation to fit your mood and budget.

CHILD'S PLAY by Robert Marasco

A strong, tense drama concerning a menacing mood developing throughout the students and faculty of a Catholic boy's school. Almost as if possessed, the boys have begun to attack each other violently and unexplainably. The faculty men are caught up in the intensity and finally violence climaxes their angry conflict. One of the most satisfying scary shows to come along in years.

**MITCHELL'S RESTAURANT
HOTEL & MARINA**
GREENPORT, N. Y.

**THE LONG ISLAND TRAVELER
MATTITUCK WATCHMAN**
"HOME NEWSPAPER OF THE NORTH FORK"
SOUTHOLD, N. Y.

REAL ESTATE & INSURANCE
**Russell P. Silleck
Agency**
Main Street Cutchogue, N. Y.
734-6472
If no answer call 734-6024
Flora S. Luce Walter F. Luce

**Reeve Lumber &
Woodworking Co., Inc.**
MATTITUCK 298-4711
MILLWORK
PAINTS
LUMBER
HARDWARE

SWEZEY'S
YOUR DEPARTMENT STORES
IN SUFFOLK
111 E. Main St.
Riverhead
1 W. Main St.
Patchogue
Open Mon. & Fri. Nites
Til 9 P. M.

SOUTHOLD DODGE
Robert E. Sayre, Prop.
AUTHORIZED
SALES AND SERVICE
DODGE — DART
USED CARS - TRUCKS
Main Street, Southold

NORTH FORK SHIPYARD

The North Fork's Largest and Fastest Growing Boat Sales and Service Offers Everything For The Yachtsman.

See Us For All Your Boating Needs.

CONCORDE FIBERGLASS—27 ft. to 47 ft.

LUHRS SEA SKIFFS — Fiberglass 25 ft. to 44 ft.

MANSON — Motor Yachts — 34 ft. to 65 ft.

SEA RAY — Fiberglass Boats — 15 ft. to 24 ft.

DELL QUAY DORY'S

USED BOATS

MARINE STORE

SERVICE

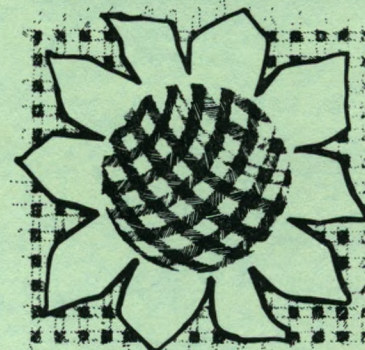
STORAGE

*Visit Our Galley-Ho Restaurant —
Overlooking Peconic Bay.*

Located at Foot of Main St., New Suffolk

734-6330 — 734-6350

ELISSA



85 Beckwith Ave.
Southold, N. Y.
765-3315

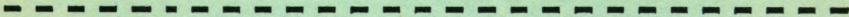
"When you sell a man a book
you don't sell him just 12
ounces of paper and ink and
glue—you sell him a whole
new life."
Christopher Morley (1890-)

BOOKS

NORTH FORK COMMUNITY THEATRE

The program for next year is being discussed right now. The audiences we have may help us in the selection of plays. We are considering the following titles as well as others and the summaries appear inside this program.

- STOP THE WORLD I WANT TO GET OFF
- SPOON RIVER ANTHOLOGY
- SEE HOW THEY RUN
- GHOSTS
- CARNIVAL
- DIARY OF ANNE FRANK
- CHILD'S PLAY
- DR. COOK'S GARDEN



Tear off and leave at Box Office or with an usher.

From the list above which shows would you like to see:

1.
2.
3.

Do you prefer: DRAMA COMEDY MUSICAL

Other titles for us to consider:

.....
.....
.....

THANK YOU