

Man of la Mancha

by
Dale Wasserman

Music + Lyrics

by
Mitch Leigh

Joe Darion



JOAN VAITIS

EXIT

STAGE



FIRE NOTICE: The exit indicated by a red light and sign nearest to the seat you occupy is the shortest route to the street in the event of fire or other emergency. Please do not run — WALK to the exit.

WHAT THE CRITICS SAY

"Speaking of ongoing dramatic ventures, they have one on the North Fork that stands out like the Northern Lights . . . Seldom has a more professional group graced the boards of a community theater. Everything they do has the hallmark of the real pro . . . sets, direction, acting and all"

Shirley Carlson—The Long Island Press

" . . . it's a pleasant surprise to find a North Fork Community Theatre."

The Suffolk Times



A unique shop featuring fine table accessories, china, crystals, pewter, linens and WEDGWOOD jewelry.

THE WEDGWOOD SHOP

ROUTE 27A (North Road)

SOUTHOLD, N. Y.

765-2000

WHO'S WHO IN THE CAST

HAL YOUNG (Don Quixote)
— NFCT on Stage: "Call Me Madame", "Peanut Butter Prince", "There Comes A Time", "Jack In A Box", "Crucible", "Absence Of A Cello", "Potting Shed", "Candlelight". The official NFCT set builder, has had a hand in almost every set since the beginning of this group. Favorite role: Patrucio in "Kiss Me Kate". Favorite set: "Mouse Trap".

PATSY TUCKER (Aldonza)
— High school, college, summer, and professional theatre. Musical experience: Nancy and Lady Brockhurst in "The Boy Friend". Did music for amateur productions of "King and I", "Carnival", "Boy Friend", and others. On stage for NFCT: "Jack In A Box", "Absence Of A Cello", "Haunting Of Hill House". First major musical role.

(Continued on Page 7)

To be or not to be . . .
Is NOT the Question!

Today's man **MUST BE** well Dressed.

The Clothes Pub has what it takes to fit you out for work, play or stepping out on the town.



MAIN STREET, SOUTHOLD
765-2650

GOLDSMITH'S BOAT SHOP, INC.

EVINRUDE MOTORS

Stamas Boats — M. F. G. Boats

Duranautic Boats

Pioneer Chain Saws

Southold

New York

516 765-1600

ABOUT "MAN OF LA MANCHA" . . .

"MAN OF LA MANCHA" is billed as a "musical play", however it is much more than this. It is certainly not a musical in the sense of the Broadway musical as we commonly know it, nor is it merely a play. For it is a play within a play, for one thing, and a play with music for another. One could almost call it an opera, and yet it does not fit that label either. Perhaps "Man Of La Mancha" is best described only as a truly magnificent experience in the theatre, and all the more so because it plows squarely upstream against the prevailing current of philosophy in so much of today's theatre . . . that of alienation, moral anarchy and despair.

The story of Miguel de Cervantes . . . playwright, soldier, actor, tax-collector and frequent jailbird . . . and his "fictional" alter ego, Don Quixote, espouses the tenet that illusion is man's strongest spiritual need and the most meaningful function of his imagination. In today's world this philosophy may seem hopelessly naive, unless one ponders for a moment the words of an old Spanish quotation: "Only he who attempts the absurd is capable of achieving the impossible".

In a way, this spirit has pervaded the membership of the NFCT and led ultimately to this production of "Man Of La Mancha". As will be evident, the staging of such a demanding show by a community theatre is an ambitious undertaking. The music, the acting and every other aspect of the production . . . from costumes to set design and lighting . . . have called upon the total resources of everyone involved. Many amateur theater groups would consider taking on the rigor of producing "Man Of La Mancha" as both "absurd" and "impossible". Fortunately, the NFCT is richly endowed with its own brand of Don Quixotes who possess that all too rare combination of desire and ability to elevate community theatre beyond the level of the commonplace.

In this production of "Man Of La Mancha" we feel we have reached another plateau in our quest to follow that dream.

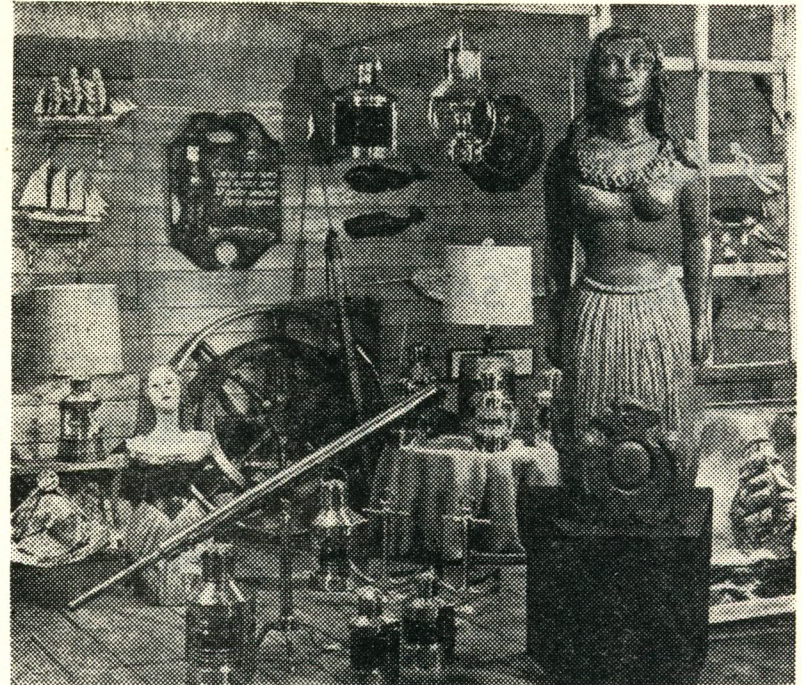
THE PRODUCER

MUSICAL NUMBERS

- Man Of La Mancha (I, Don Quixote)Don Quixote, Sancho
and Horses
- It's All The Same.....Aldonza and Muleteers
- Dulcinea Don Quixote, late The Muleteers
- I'm Only Thinking Of Him.....The Padre, Antonia, Housekeeper,
later Dr. Carrasco
- I Really Like Him Sancho
- What Does He Want Of Me Aldonza
- Little Bird, Little Bird Anselmo and Muleteers
- Barber's Song The Barber
- Golden Helmet Of Mambrino Don Quixote, Sancho,
Barber and Muleteers
- To Each His Dulcinea The Padre
- The Quest (The Impossible Dream) Don Quixote
- The Combat Don Quixote, Aldonza, Sancho and Muleteers
- The Dubbing Innkeeper, Aldonza, Sancho
- The Abduction Aldonza and Muleteers
- Moorish Dance Ensemble
- Aldonza Aldonza
- The Knight Of The Mirrors Don Quixote, The Knight
and His Attendants
- A Little Gossip Sancho
- Dulcinea (Reprise) Aldonza
- Man Of La Mancha (Reprise) Don Quixote, Aldonza, Sancho
- The Psalm The Padre
- The Quest (Reprise) The Company

Orchestra

- Conductor Walter Ganko
- Assistant Conductor Mike Casa
- Piano, Musical Directors.....Barbara Woolley, Shirley Bachrach
- Flutes Mary Bess LaFreniere, Debbie Dean, Marcia Rider
- Clarinets Barbara Pawlik, Ann Clark
- Trumpets.....Al Yedloutschnig, Buzz Taylor, Christopher Young
- Trombones Charles Hardy, Susan Taylor
- Guitars Jennifer Young, Cathy Mooney
- Drums Jon Wacker



A STORE for THOSE WHO LOVE SHIPS and the SEA

For Your Boat:

One of the **LARGEST** and **MOST COMPLETE**
stocks of marine supplies in Eastern Long Island

Nautical Items for your home:

- SHIP MODELS ● FIGUREHEADS
- NAUTICAL PRINTS & PICTURES
- COPPER SHIP'S LIGHTS ● MODEL BRASS CANNONS
- ESKIMO CARVINGS ● HANDCRAFTED POTTERY

PRESTON'S
at Main Street Wharf
Greenport, Long Island, N.Y.

11944

Tel: 516 477-1990

Since 1882

SOUTHOLD SAVINGS BANK

"HOME FOR SAVINGS SINCE 1858"

Southold, N. Y.

Member Federal Deposit Insurance Corp.

The Suffolk Weekly Times

Printing & Publishing

Greenport, N. Y.

Since 1857

Official Paper For
Town Of Southold
Village of Greenport

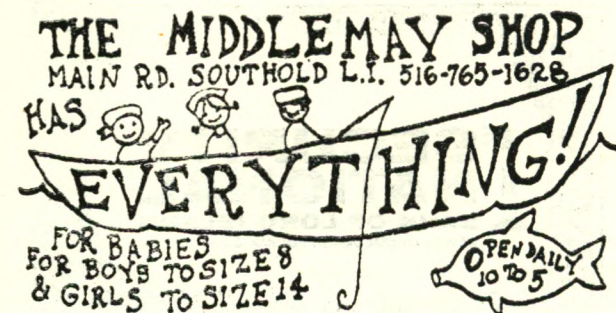
SWEZEY'S

YOUR DEPARTMENT STORES
IN SUFFOLK

**111 E. Main St.
Riverhead**

**1 W. Main St.
Patchogue**

Open Mon. & Fri. Nites
Til 9 P. M.



THE LONG ISLAND TRAVELER MATTITUCK WATCHMAN

"HOME NEWSPAPER OF THE NORTH FORK"

SOUTHOLD, N. Y.

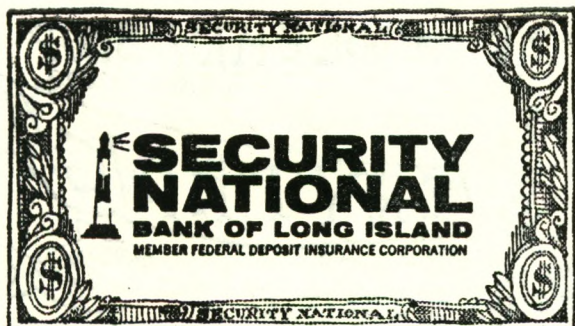
WHO'S WHO IN THE CAST

(Continued From Page 2)

JACK MOFFAT (Padre).— For NFCT: Author-song writer of "Peanut Butter Prince", "There Comes A Time", "Jack In A Box". On stage: "Browning Version", "Separate Tables", "Crucible", "Little Foxes", "Mary, Mary", "Blithe Spirit", "Guys And Dolls", "Pajama Game". Director: too numerous to mention. Favorite role: Tom in "Glass Menagerie".

JOHN RASANEN (Sancho)— First time with NFCT. N.Y.S. School Music Association All State Chorus, 2 years. Assistant director and soloist for 3rd Army Chorus based in Fort Benning, Ga., 2 years. Sang with Long Island and Mineola Choral Societies, North Fork Chorale and the Vocal Workshop in Mattituck. First production with NFCT.

(Continued On Page 8)



Oscar Goldin

Auctioneer - Appraiser
 Real Estate Broker
 441 Main Street
 Greenport, L. I., N. Y.
 Tel. 477-2220

Village Liquors

Main Street Southold, N. Y.
 765-5434

WHO'S WHO IN THE CAST

(Continued From Page 7)

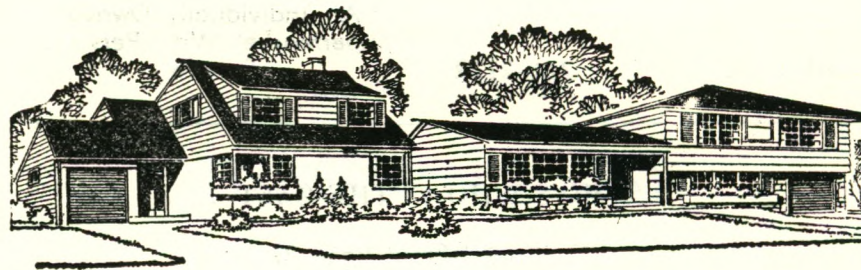
BARBARA JAZOMBEK — (Housekeeper)—NFCT on stage: "Call Me Madam", "Jack In A Box", "There Comes A Time", "Kiss Me Kate". Favorite role: Queen Esmerelda in "Peanut Butter Prince". Mattituck resident, 2 children, Fifth Grade teacher.

GEORGIA O'CONNOR (Antonia)—St. Patrick's: Member of the choir and director of the Folk Group. NFCT on stage: Michelle in "Bells Are Ringing". Founder's Follies. Southold resident, mother of 2 sons.

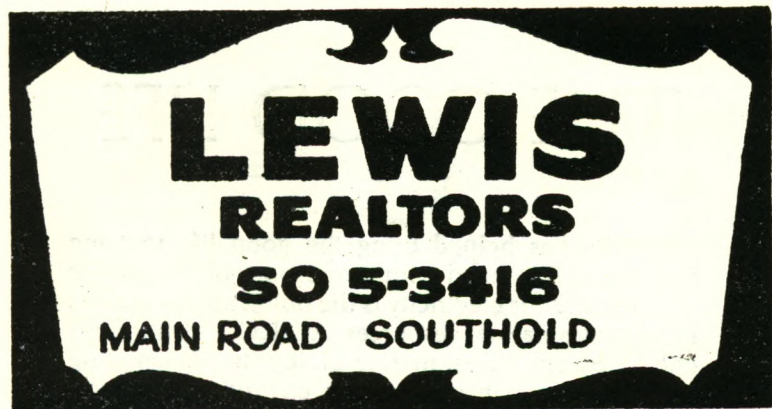
(Continued On Page 10)

THE GOOD LIFE

Electricity has helped bring the good life to Long Island. Hand in hand with the responsibility to meet this demand for electricity is the obligation to protect our Island's natural resources. At LILCO, continuous checks by engineers, marine biologists, air-sampling technicians and ecologists are environmental projects that go on day after day. Concern for Long Island's environment has a direct bearing on the decisions we make in operating our power plants, landscaping our substations and on being a good neighbor in the communities where our installations are located. At LILCO, we put a lot of effort into the protection of Long Island's environment.



LILCO
 LONG ISLAND LIGHTING
 AN INVESTOR-OWNED, TAXPAYING COMPANY



HART HARDWARE

WALLPAPER

Largest Selection On
North Fork

Southold

765-2122

**Associated
Supermarket**

Second St. New Suffolk
Tel. 734-6567

An Individually Owned
Supermarket With Personal
Service

WHO'S WHO IN THE CAST

(Continued From Page 8)

DON HAMBLIN (Innkeeper)
— Lafayette College graduate.
Greenport resident. On stage:
"The Terrible Meek", "Easy
Come, Easy Go", "Hamlet",
"Macbeth", "Winterset", and as-
sorted church plays, pageants and
variety shows. First time with
NFCT.

CARMEN SWEENEY (Inn-
keeper's Wife)—Worked in pro-
duction for Sacred Heart School:
"Green Grow The Spuds", "South
Peconic". New member NFCT.
Lives in Mattituck. Mother of 4
boys. Took course in production
and direction given by Suffolk
Community College.

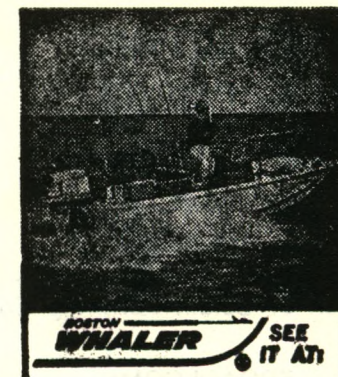
(Continued On Page 17)

**McMANN - PRICE
AGENCY
INSURANCE**

Call "Bill" Price

238 Main Street
Greenport, N. Y.

Tel. 477-1680



Main Rd., Route 25
Southold, L. I., N. Y.
765-3131

Johnson and Bearcat Motors

COMPLIMENTS OF

FISHERMEN'S REST

Famous For
**ITALIAN FOOD — PIZZA PIES
VEAL PARMESAN
CHICKEN CACCIATORA**

SERVING LUNCHEONS — 11:30 to 4:00

DINNERS — 4:00 to 11:00

WEDNESDAY IS LADIES' DAY

MAIN ROAD

CUTCHOGUE, L. I.

734-5155

**GREENPORT
CARPET CO.**

**434 MAIN STREET
GREENPORT, N. Y.
477-0940**

Division of Goldin Furniture Co.

**BROADLOOMS
FAMOUS BRANDS**

Shop and Compare
We know you will buy here

WE INSTALL

John W. Duryee

Hardware — Marine Equipment
House Furnishings — Paints
G. E. Appliances
Love Lane Mattituck, N. Y.
298-8420

**North Fork
Oil Heat**

Fred Siemerling, Prop.

**Petroleum Products Distributors
Heating & Plumbing Installations
298-8219 298-4764
Westphalia Road, Mattituck**

Compliments of
Quality Kitchens
Ed Hindermann, Prop.
Tel. 734-5150

SETTING

All the characters in the play are imprisoned in a dungeon in Seville at the end of the sixteenth century. The entire action takes place there and in various other places in the imagination of Miguel de Cervantes. The characters' identities in the story he creates are listed on the following page.

"Man Of La Mancha" is performed without intermission.



NORTH FORK
... BANK & TRUST CO. ...
MATTITUCK CUTCHOGUE SOUTHOLD GREENPORT
JAMESPORT
SHELTER ISLAND HEIGHTS

**COLONIAL
DRUGS
GREENPORT**

OPEN

MONDAY THRU SATURDAY
8:30 A. M. - 9:00 P. M.

SUNDAYS
9:00 A. M. - 2:00 P. M.

Silkworth
IND.

REAL ESTATE & INSURANCE
ANNOUNCING OUR 57th
ANNIVERSARY

OVER A HALF CENTURY OF
SERVICE, 1913 — 1970

Realistic Value Listings

Always Welcome

**OFFICE - MAIN ROAD
MATTITUCK
Tel. 298-4747**

**THE NORTH FORK
COMMUNITY THEATRE**

Presents


Man of La Mancha

By Special Arrangement With —
Tams-Witmark Music Library, Inc.

C A S T

DON QUIXOTE Hal Young
SANCHO John Rasanen
ALDONZA Patsy Tucker
THE INNKEEPER Don Hamblin
THE PADRE Jack Moffat
DR. CARRASCO, Knight of the Mirrors Don Cahill
ANTONIA Georgia O'Connor
THE BARBER, Muleteer Joe Nolan
MULETEER, Moor, Captain of the Inquisition... John Ashton
THE HOUSEKEEPER Barbara Jazombek
HORSE, Muleteer Joe Remkus
BURRO, Muleteer Art Quintana
GUITAR PLAYER, Muleteer Joe Noon
MULETEER, Moor Harrison Bachrach
MARIA, Innkeeper's Wife Carman Sweeney
FERMINA, Moorish Dancer Kathleen Cahill
PRISON GUARDS, Inquisitors... Mary Register, Stage Crew

**Wines and
Liquors**
for your Party!



PECONIC
LIQUOR STORE
PECONIC - LONG ISLAND - NEW YORK

765-3260

**SEABOARD
COMMUNICATIONS
CORP.**

SALES SERVICE

MARINE ELECTRONICS
C. B. & BUSINESS
BAND EQUIPMENT

**FOOT OF MOBIL DOCK
GREENPORT, N. Y.**

477-1944

FOR THE GIFT OF LOVE GIVE
HER DIAMONDS

**KALLER'S
JEWELRY STORE**

27 East Main Street
Riverhead, N. Y.
727-4099

Compliments of

GREENPORT

I G A

Eastern Suffolk's First Radio Station

And Still Number ONE

WRIV

1390 AM RADIO

RIVERHEAD

LONG ISLAND, N. Y.

**SOUNDVIEW
Restaurant
and
Cocktail Lounge**

PIANO BAR

North Road (27A)
Bet. Greenport & Southold
Long Island, N. Y.
Tel. 477-9840

WHO'S WHO IN THE CAST

(Continued From Page 10)

DON CAHILL (Dr. Carrasco)
— First time on stage anywhere.
An active member of NFCT. The
fourth member of his family to
catch the acting bug. His home is
in Cutchogue with wife, Maureen
and 10 children.

KATHLEEN CAHILL (Fer-
mina)—Senior at Southold High
School. S.H.S. on stage: "Man
Who Came To Dinner", and pre-
sently the lead in "Up The Down
Staircase". NFCT on stage: "Ab-
sence Of A Cello", "She Loves
Me".

(Continued On Page 18)

Early American Homes

George Ahlers, Builder

Eugenes Road
Cutchogue, N. Y.
Tel. 734-5010

**Reeve Lumber &
Woodworking Co., Inc.**

MATTITUCK 298-4711

MILLWORK
PAINTS
LUMBER
HARDWARE

I. M. Young & Co.

Division Of
Lebanon Chemical Corporation
Riverhead, N. Y.

**Eckert
Oil Service, Inc.**

FUEL OIL
BUDGET PLANS
Mattituck, L. I.
298-4197

**Mattituck Plumbing &
Heating Corp.**

- We sell
 - We install
 - We guarantee
- 298-8393

WHO'S WHO IN THE CAST

(Continued From Page 17)

JOE REMKUS (Muleteer) — Stock and college on stage: "Who's Afraid Of Virginia Wolf?", "Marat Sade", "Arms and The Man", "Caligula". NFCT (his first season) on stage: "Haunting Of Hill House". Technical crew: "Odd Couple".

ART QUINTANA (Muleteer) — First time in a play. Appeared in Polio and Rotary variety shows in Greenport performing Spanish songs. Lives in East Marion.

(Continued On Page 20)

" See The Man From VALLEY NATIONAL "

For All Your Banking Needs
22 OFFICES

Serving All Of
SUFFOLK and NASSAU
Member FDIC

238 Main Street

Greenport, New York

Southold Liquor Store

Wines and Liquors

Main Road Southold, L. I.

Tel. 765-2221

Henry Smith

PLUMBING & HEATING

Southold, New York

MARINE MIDLAND — TINKER NATIONAL BANK

The Action Bank With More Interest To You,
Serving Suffolk County . . .

Port Jefferson Station * East Setauket * Centereach
Patchogue * Rocky Point * Southampton * South Setauket
Brentwood * Smithtown * Middle Island

Member Federal Deposit Insurance Corporation

Federal Deposit Insurance Is Now Increased To \$15,000

Mullen Motors, Inc.

CHRYSLER — PLYMOUTH

Sales & Service

East Main St. Southold, N. Y.

Tel. 765-3564

Tel. 477-1906

FLEET LUMBER INC.

"For Good Measure"

ROUTE 25

GREENPORT

Arcade Telephone: 477-1440
Dept
Store

FRONT, MAIN and ADAMS STREET, GREENPORT

WHO'S WHO IN THE CAST

(Continued From Page 18)

JOE NOLAN (Muleteer) — Sang with Downtown Glee Clubs and Community Singers of Queens. NFCT on stage: "Bells Are Ringing". Technical crew: "Haunting of Hill House". Active member of North Fork Chorale Society.

JOE NOON (Muleteer) — New member NFCT. First time on stage. Teaches classical guitar in the Adult Education program. Teaches Sixth Grade at Greenport High School.

(Continued On Page 22)

GEORGE L. PENNY, INC.

LUMBER and
BUILDING MATERIALS

Over 75 Years of Building
Supply Service

MATTITUCK - GREENPORT

298-8559

477-0400

FRANK MURPHY GARDEN CENTER

& FLORIST

FLOWERS FOR
ALL OCCASIONS

— LANDSCAPING —

Main Road, Mattituck

298-4650

COMPLIMENTS OF

RIVERHEAD SAVINGS BANK

7 West Main Street

Riverhead, New York

"Save At The Time and Temperature Sign"

727-3600

MEMBER F D I C

Branch Office:

East Northport, N. Y.

Lake Grove, N. Y.

Rackett's Esso Station

1100 Main Street

Greenport, L. I.

Barth's

Drug Store

Prescription Experts

Donald F. Barth, Ph. C., Prop.

32 E. Main Street 727-2125

Riverhead, N. Y.

Van's Hardware

DUTCH BOY PAINTS

Housewares & Garden Supplies

Greenport, N. Y.

477-0449

Southold Lumber Co., Inc.

Youngs Ave., Southold, L. I.

765-2552



A little goes a long way.

Don Wald's

Autohaus
CORP.

ROUTE 58

RIVERHEAD, L. I., NEW YORK

WHO'S WHO IN THE CAST

(Continued From Page 20)

JOHN ASHTON (Muleteer)
—New member of NFCT. First time on stage since Boston College. Born in Rochester, N. Y. Lives in Mattituck with wife, Mimi and 3 children, Jane, 7, Peggy, 5, Tommy, 4.

MARY REGISTER (Inquirer)—NFCT on stage: "Little Moon Of Alban", Thurber Carnival". Technical crew: "Little Moon Of Alban". This year's ticket chairman. Favorite role: Ella in "Bells Are Ringing". Lives in Southold with husband, Bob and 3 sons.

(Continued On Page 26)



Restaurant & Cocktail Lounge
Main St., Greenport 477-2000

hope and connie's
gift mart

greenport, n. y.

Let us share with you
the joy of giving

Kouros Camera Shop

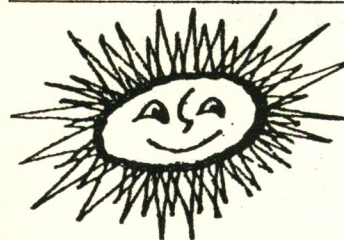
Automatic - Movie And
Still Cameras

Dependability & Service
Is Our Motto

Tel. 298-8864

Main Road

Mattituck



120 Front Street

Raymond F. Nine

RUBBISH REMOVAL

"Service is fine

When you call Nine"

New Suffolk Ave. Mattituck

298-8828

Your Local Community Bank

**THE SUFFOLK
COUNTY NATIONAL
BANK**

Cor. of 2nd St. & Roanoke Ave.

RIVERHEAD, NEW YORK

Montauk Highway

HAMPTON BAYS

Route 25-A & Manor Road

WADING RIVER

Ample Parking

Drive-in Windows

MEMBER F. D. I. C.

Something to give
to Somebody Special

(... and don't forget yourself)

... a vacation in the sun. Let us do
the arranging for you. We'll plan a bright
vacation to fit your mood and budget.

Greenport Travel Agency, Inc.

477-0777

FRANKLIN NATIONAL BANK

RIVERHEAD, N. Y.

MEMBER FEDERAL DEPOSIT INSURANCE CORP.

COLONIAL VILLAGE AT SOUTHOLD

One and two bedroom Garden Apartments, Permanent living for persons of mature age in a private community nestled in the heart of the charming historic Village of Southold. Short walk to shops, churches, etc.

Main St. At Ann's Way
Southold, New York
Tel. 765-3436

Southold Hardware

**Sherwin-Williams &
Keystone Paints**

Mowers — Sales & Service

Tel. 765-2277

Compliments Of

Colonial Liquor Store

LOVE LANE
MATTITUCK, N. Y.
298-4650

Washington White's Sons

Hardware	Marine Supplies	Paint	Tools
120 Main Street			Greenport, N. Y.
Telephone 477-0317			

Tappert's Bookshop

STATIONERY	BOOKS	PRINTING
24 Front Street	Greenport, L. I. 11944	Tel. 477-0206

ABOUT THE NFCT . . .

In the fall of 1956 a small ad appeared in the pages of the Suffolk Times. It began, "Wanted—people interested in starting an amateur theater . . .".

Today, 15 years later, the fledgling organization that resulted from that little ad can boast a membership of more than 120, its own well-equipped theater, and a reputation for consistently professional performances of the finest dramatic works.

The goals of the NFCT are infinitely more simple to state than to implement, and yet, thanks to the prevailing tenacity of the membership over the years, audiences inevitably leave the theater after each new production with the feeling that "this one was the best yet". Of course that is our primary goal . . . to provide our community with the kind of theater one would otherwise have to travel miles to see. To this end, each season traditionally opens with a comedy followed by a straight drama or a mystery, and winds up with a full-scale musical production in the spring. Thus do we provide not only good theater but a variety of dramatic forms as well. Carrying this even further, the NFCT does not confine itself to revivals of Broadway successes, but has a well-renowned reputation for original works of NFCT members . . . most notably those of Jack Moffat. Who will ever forget his "Peanut Butter Prince", or "There Comes A Time", and "Jack In The Box"?

As long as we're naming names, let's retrace our steps back to that 1956 ad which started the whole thing. It was placed by Jim and Doris MacCammond, then of Orient, and the first production of the infant NFCT was "The Man Who Came To Dinner", directed by Doris and starring Jim as Sheridan Whiteside. As the group grew so did its list of accomplishments, and directors the likes of Dorothy Robertson, Connie Overton and Fred Newell made lasting impressions with their stagings of "Harvey", "Bus Stop" and the "Glass Menagerie", to mention only a sampling of the NFCT's early repertoire.

With each new production, new names appear along with the old, and this is the essence of the success and longevity of the NFCT. In recent seasons memorable performances were turned in by the inimitable Hal Young, Art Wilks and Bob Freeman in several shows; Maureen and Jack Moffat, Clacia Young, Dick Dries, Jon Richmond and Jack Reed in "The Little Foxes"; Cindy Ackroyd and Dick Dries in "A Thurber Carnival"; Pat Seaman and Larry Presby in "Little Moon Of Alban". Mary Register and Frank Steele in "Bells Are Ringing"; Dick Dries (again!) and Bob Ackroyd in "The Odd Couple"; and most recently, Linda Graham and Pat Tucker in "The Haunting Of Hill House".

(Continued On Page 26)

ABOUT THE NFCT . . .

(Continued From Page 25)

In between those given mention here are another 26 shows and a host of talented performers and production staffs that would fill pages. We can only say a most sincere "thanks" to those who have contributed so ably along the way, as well as to you . . . the most important of all . . . our audience.

WHO'S WHO IN THE CAST

(Continued from Page 22)

HARRISON BACHRACH (Muleteer) — Theatrical debut. Tenth year student at Southold High School. Active in Forum and Chess Clubs. A pleasure to work with!

WALTER GANKO (Conductor) — Active in High School Band. Trumpeter. Attended New York University. Guest conductor and plays with the Summer Band in Riverhead. Lives there with wife. Teaches Elementary Music at Greenport High School.

FROM THE EDITOR

The musicians for this production are members of area High School Bands and Orchestras. For most, it is their first experience with the NFCT and playing for a musical is very different from their usual experiences. This is the first time we have used a full orchestra and their hard work and long hours rehearsing have proved it a successful idea. We would like to thank them for their cooperation.

MARJORY MOFFAT



DRESSES - LOUNGE-WEAR
LINGERIE

Leisurely
Yours
by
Judith

FOR THAT
SPECIAL
Look Of LEISURE
For You And Yours

Hours 10:00 to 5:00

Southold, L. I.

Tel 765-1660

C. P. Tuthill, Inc.

Plumbing - Heating
Oil Burners

Quality Paints, Varnishes and Supplies
Water Systems

Tel. 734-6779

Rothman's

DEPARTMENT STORE
GENERAL ELECTRIC
APPLIANCES & TELEVISION

"THE FINEST IN
MERCHANDISE and SERVICE"

REAL ESTATE & INSURANCE

Russell P. Silleck
Agency

Main Street Cutchogue, N. Y.
734-6472

If no answer call 734-6024

Flora S. Luce Walter F. Luce

Barker's

Pharmacy, Inc.

MATTITUCK. N. Y.

Meet the real Felix Ungar
of THE ODD COUPLE

BOB ACKROYD

For All Your Life Insurance
And Estate Planning Needs



Massachusetts Mutual
Life Insurance Co.

298-9103 289-5500

Wendy
Fabric

Shop

CUSTOM MADE SLIPCOVERS
& DRAPES

Route 58 Riverhead, N. Y.

Riverhead Shopping Plaza
727-3525

NORTH FORK SHIPYARD

The North Fork's Largest and Fastest Growing Boat Sales and Service Offers Everything For The Yachtsman.

See Us For All Your Boating Needs.

CONCORDE FIBERGLASS—27 ft. to 47 ft.

LUHRS SEA SKIFFS—All Fiberglass & Wood & Fiberglass
25ft. to 38 ft.

SEA RAY—Fiberglass Boats

ULRICHSEN SEA SKIFFS—33 ft. to 37 ft.

USED BOATS

MARINE STORE

SERVICE

STORAGE

MARINA

*Visit Our Galley-Ho Restaurant —
Overlooking Peconic Bay.*

Located at Foot of Main St., New Suffolk

734-6330 — 734-6350

PRODUCTION STAFF

Assistant Director	Maureen Cahill
Stage Manager	Marjory Moffat
Stage Crew	Pete Sweeney, Steve Sweeney
Set Design & Construction	Bill Hess, Hal Young, Jon Richmond, Dick Reed, Phil Sweeney Dick Winters, Bob Register, Bill Price
Set Decoration	Bill Hess, Muriel Winters, Frank Steele, Pat Tucker, Bob Ackroyd
Lighting	Jon Richmond, Dick Winters, Don Fisher, Bob Register
Props	Linda Graham, Ed Graham, Fran Osmer, Kathy O'Brien, Chuck Bondi, Judy Utter, Herman Lieblein
Costumes	Cindy Ackroyd, Mary Register, Judy Utter, Penny Coyle, Gloria Fultz, Mary Bambach, Ami Young, Muriel Winters, Georgia O'Connor, Jack Moffat Maureen Cahill, Jeanne Arnold
Make-up	Maureen Moffat, Gertrude Reynolds, Clacia Young, Alice Carr, Pat Seaman, Robin Ackroyd
House Manager	Dave Detrich
Ushers	James Helinski, Chris Register, Beverly Burns, Jean Koehler, Pam Greinke, Barbara Clay, Laura Aksein, Linda and Joann Szymanowski
Box Office	Cindy Ackroyd, Annette Lieblein, Anne Richmond, Nancy Moyna, Clacia Young, Marie Worrell, Penny Coyle
Tickets	Anne Richmond
Hospitality	Diane Marcus, Fran Schmidt
Publicity	Maureen Cahill, Joe Remkus, Bob Ackroyd, Tony Dobek
Program Editor	Marjory Moffat
Program Cover	Joan Vaitis

