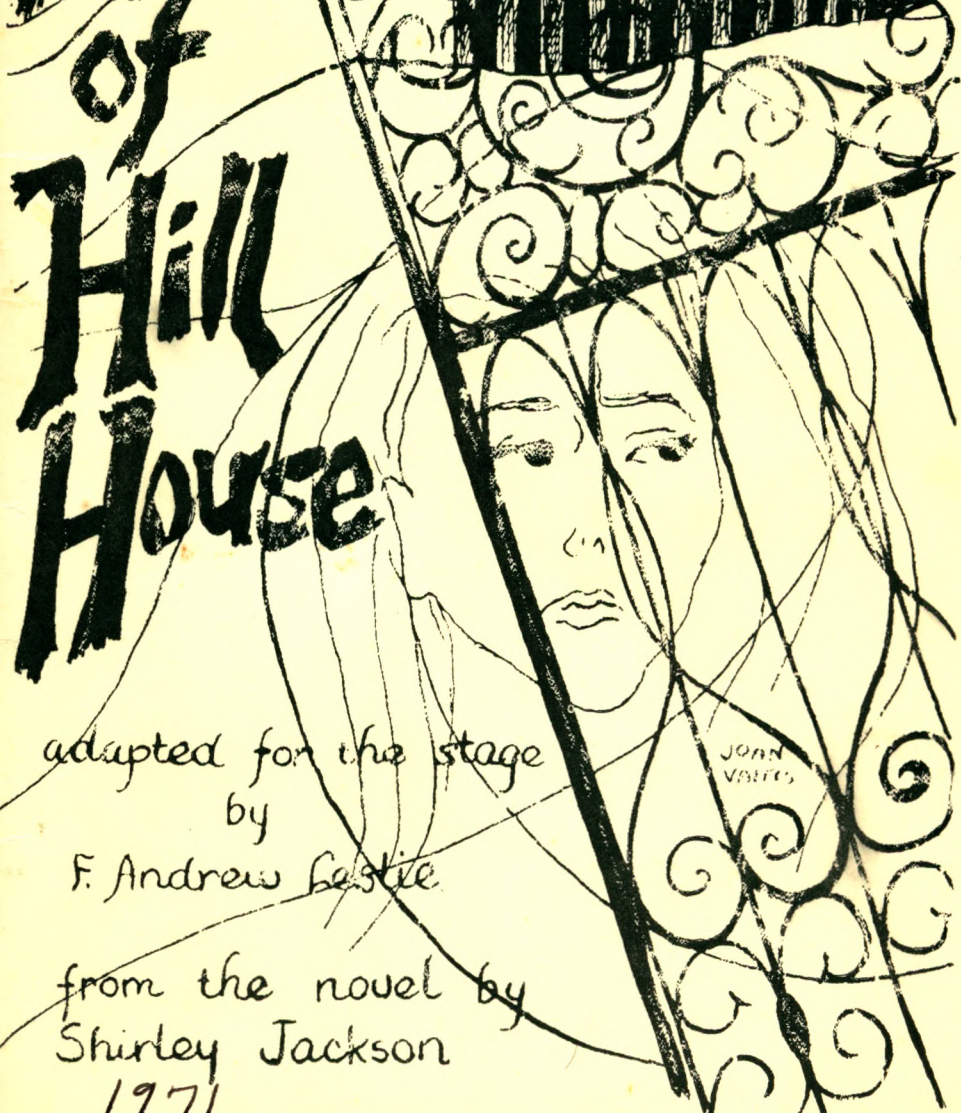


the Haunting of Hill House



adapted for the stage
by
F. Andrew Festle

JOHN
VALES

from the novel by
Shirley Jackson
1971

WHO'S WHO IN THE CAST

LINDA GRAHM (Eleanor Vance) — Has been active in the theater since high school days. Her work with a group at Hartwick College in Oneonta, N. Y. earned her membership in Alpha Psi Omega, a national honorary dramatics fraternity. She and her husband Ed have both been active in the N. F. C. T. since they settled in Southold where they live with their two children, Heather, 3½ and Timothy, 16 months. Linda's roles for us have been varied and many including the 60 year old housekeeper in THE POTTING SHED. She was producer and appeared in two minor parts for BELLS ARE RINGING last spring.

(Continued on Page 5)

To be or not to be . . .
Is NOT the Question!

Today's man MUST BE well
Dressed.

The Clothes Pub has what it
takes to fit you out for work, play
or stepping out on the town.



MAIN STREET, SOUTHOLD
765-2650

2

GOLDSMITH'S BOAT SHOP, INC.

EVINRUDE MOTORS

Stamas Boats — M. F. G. Boats

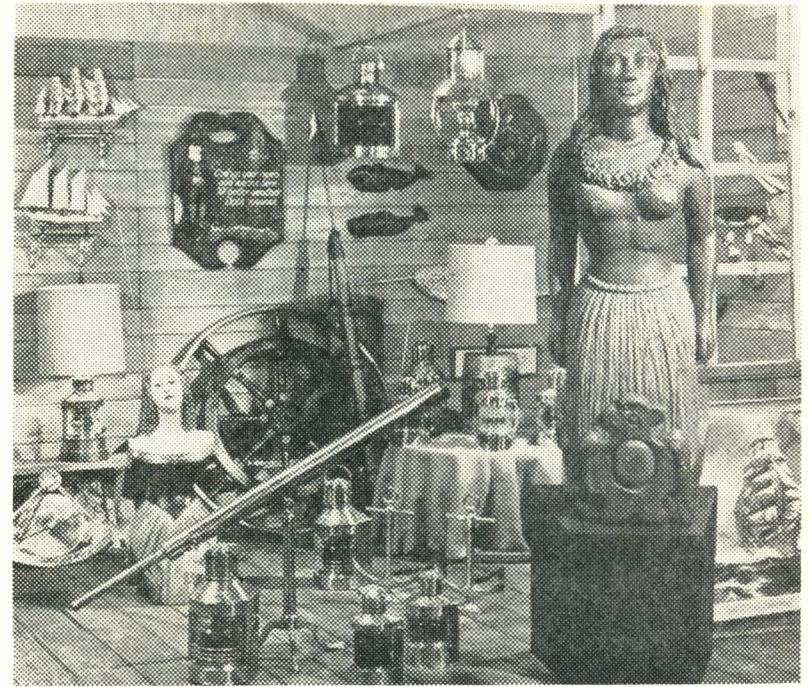
Duranautic Boats

Pioneer Chain Saws

Southold

New York

516 765-1600



A STORE for THOSE WHO LOVE SHIPS and the SEA

For Your Boat:

One of the LARGEST and MOST COMPLETE
stocks of marine supplies in Eastern Long Island

Nautical Items for your home:

- SHIP MODELS ● FIGUREHEADS
- NAUTICAL PRINTS & PICTURES
- COPPER SHIP'S LIGHTS ● MODEL BRASS CANNONS
- ESKIMO CARVINGS ● HANDCRAFTED POTTERY

PRESTON'S
at Main Street Wharf
Greenport, Long Island, N.Y.

11944

Tel: 516 477-1990

Since 1882

3

SOUTHOLD SAVINGS BANK

"HOME FOR SAVINGS SINCE 1858"

Southold, N. Y.

Member Federal Deposit Insurance Corp.

The Suffolk Weekly Times

Printing & Publishing

Greenport, N. Y.

Since 1857

Official Paper For
Town Of Southold
Village of Greenport

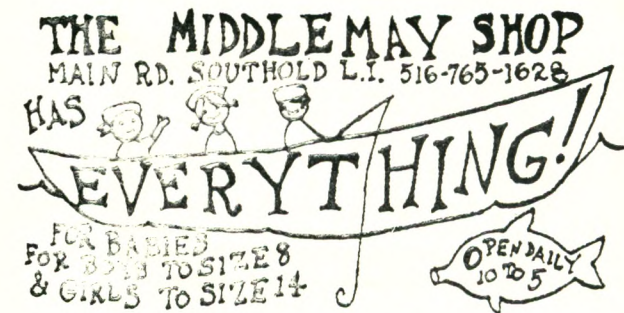
SWEZEY'S

YOUR DEPARTMENT STORES
IN SUFFOLK

111 E. Main St.
Riverhead

1 W. Main St.
Patchogue

Open Mon. & Fri. Nites
Til 9 P. M.



THE LONG ISLAND TRAVELER MATTITUCK WATCHMAN

"HOME NEWSPAPER OF THE NORTH FORK"

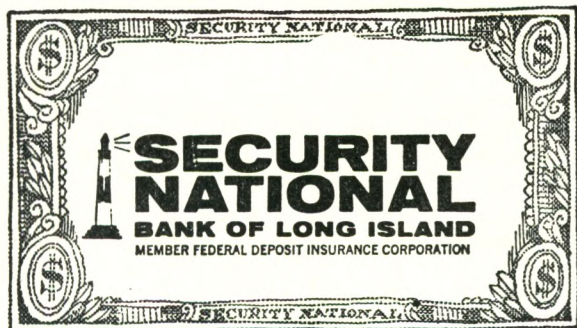
SOUTHOLD, N. Y.

WHO'S WHO IN THE CAST

(Continued From Page 2)

JOE REMKUS (Arthur Parker) — Was born in North Carolina and moved to Sag Harbor in 1959. He has been active on stage and off since he attended Pierson High School. During his four years at Southampton College, where he majored in Geology, he was involved in a number of productions including WHO'S AFRAID OF VIRGINIA WOLF which had a successful run as summer stock. He joined the NFCT this Fall with THE ODD COUPLE and is still active at Southampton College when he's not teaching Science and Math at Southold High School.

(Continued on Page 6)



Oscar Goldin

Auctioneer - Appraiser
Real Estate Broker
441 Main Street
Greenport, L. I., N. Y.
Tel. 477-2220

Village Liquors

Main Street Southold, N. Y.
765-5434

WHO'S WHO IN THE CAST

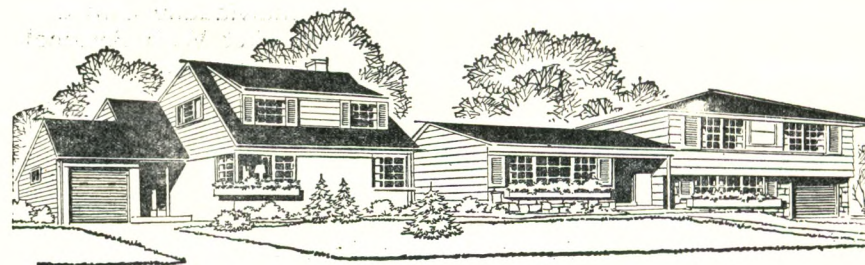
(Continued from Page 5)

DIANE S. MARCUS (Mrs. Montague) — Graduated from St. John's Episcopal School of Nursing in Brooklyn and after trying several other places has returned to Mattituck with her 3½ year old daughter, Elizabeth. She is on the staff at Central Suffolk Hospital. This is her first year with the NFCT and, although she worked back stage for THE ODD COUPLE, the only other experience she has had in front of an audience was a dramatic reading in Dylan Thomas' UNDER THE MILKWOOD while on the faculty of Darrow School.

(Continued on Page 8)

THE GOOD LIFE

Electricity has helped bring the good life to Long Island. Hand in hand with the responsibility to meet this demand for electricity is the obligation to protect our Island's natural resources. At LILCO, continuous checks by engineers, marine biologists, air-sampling technicians and ecologists are environmental projects that go on day after day. Concern for Long Island's environment has a direct bearing on the decisions we make in operating our power plants, landscaping our substations and on being a good neighbor in the communities where our installations are located. At LILCO, we put a lot of effort into the protection of Long Island's environment.



LILCO
LONG ISLAND LIGHTING
AN INVESTOR-OWNED, TAXPAYING COMPANY

**LEWIS
REALTORS
SO 5-3416
MAIN ROAD SOUTHOLD**

HART HARDWARE

WALLPAPER

Largest Selection On
North Fork

Southold 765-2122

**Associated
Supermarket**

Second St. New Suffolk
Tel. 734-6567

An Individually Owned
Supermarket With Personal
Service

WHO'S WHO IN THE CAST

(Continued from Page 6)

JOE TOWNSEND (Luke Sanderson) — Left Greenport for New England and four years at Boston University. He spent a year teaching 4th grade in Philadelphia and then returned to Boston to teach high school there for two years. He's now back with us to work with his father's insurance agency in Greenport. This is his first time on stage anywhere (he likes to claim he even avoided his 6th grade pageant). Until we managed to lure him into our group he spent most of his free time rowing on Mill Creek, a preoccupation with him since his first year at college.

(Continued on Page 16)

**McMANN - PRICE
AGENCY
INSURANCE**

Call "Bill" Price

238 Main Street

Greenport, N. Y.

Tel. 477-1680



Main Rd., Route 25
Southold, L. I., N. Y.
765-3131

Johnson and Bearcat Motors

COMPLIMENTS OF

FISHERMEN'S REST

Famous For

ITALIAN FOOD — PIZZA PIES

VEAL PARMESAN

CHICKEN CACCIATORA

SERVING LUNCHEONS — 11:30 to 4:00

DINNERS — 4:00 to 11:00

WEDNESDAY IS LADIES' DAY

MAIN ROAD

CUTCHOGUE, L. I.

734-5155

**GREENPORT
CARPET CO.**

**434 MAIN STREET
GREENPORT, N. Y.
477-0940**

Division of Goldin Furniture Co.

BROADLOOMS
FAMOUS BRANDS

Shop and Compare
We know you will buy here

WE INSTALL

John W. Duryee

Hardware — Marine Equipment
House Furnishings — Paints
G. E. Appliances
Love Lane Mattituck, N. Y.
298-8420

**North Fork
Oil Heat**

Fred Siemerling, Prop.
Petroleum Products Distributors
Heating & Plumbing Installations
298-8219 298-4764
Westphalia Road, Mattituck

Compliments of
Quality Kitchens

Ed Hindermann, Prop.
Tel. 734-5150

SCENES

The time is the present. The place is Hill House, a brooding, isolated and innately forbidding mansion located deep in the back country of an Eastern State.

ACT I

Scene 1: Late afternoon

Scene 2: That night

(Continued on Page 15)



The NORTH FORK
... BANK & TRUST CO. ...
MATTITUCK CUTCHOGUE  SOUTHOLD GREENPORT
JAMESPORT
SHELTER ISLAND HEIGHTS

COLONIAL
DRUGS
GREENPORT

OPEN

MONDAY THRU SATURDAY
8:30 A. M. - 9:00 P. M.

SUNDAYS
9:00 A. M. - 2:00 P. M.

Silkworth
INC.

REAL ESTATE & INSURANCE
ANNOUNCING OUR 57th
ANNIVERSARY

OVER A HALF CENTURY OF
SERVICE, 1913 — 1970

Realistic Value Listings

Always Welcome

OFFICE - MAIN ROAD

MATTITUCK

Tel. 298-4747

12

THE NORTH FORK
COMMUNITY THEATRE

Presents

The Haunting of Hill House

By Shirley Jackson

By special arrangement with
Dramatists Play Service, Inc.

Directed By
Lew Padavan

CAST

(In Order of Appearance)

ELEANOR VANCE Linda Graham
MRS. DUDLEY Marion Beaton
THEODORA Patsy Tucker
DR. MONTAGUE Jack Reed
LUKE SANDERSON Joe Townsend
MRS. MONTAGUE Diane S. Marcus
ARTHUR PARKER Joe Remkus

Wines and
Liquors
for your Party!



765-3260

SEABOARD
COMMUNICATIONS
CORP.

SALES

SERVICE

MARINE ELECTRONICS
C. B. & BUSINESS
BAND EQUIPMENT

FOOT OF MOBIL DOCK
GREENPORT, N. Y.

477-1944

13

FOR THE GIFT OF LOVE GIVE
HER DIAMONDS

**KALLER'S
JEWELRY STORE**

27 East Main Street
Riverhead, N. Y.
727-4099

Compliments of

GREENPORT

I G A

**Eastern Suffolk's First Radio Station
And Still Number ONE**

WRIV

1390 AM RADIO

RIVERHEAD

LONG ISLAND, N. Y.

**SOUNDVIEW
Restaurant
and
Cocktail Lounge**

PIANO BAR

North Road (27A)
Bet. Greenport & Southold
Long Island, N. Y.
Tel. 477-9840

SCENES

(Continued from Page 10)

ACT II

Scene 1: Late morning, several days later.
Scene 2: That evening

ACT III

Scene 1: The next evening
Scene 2: The following morning

Early American Homes

George Ahlers, Builder
Eugenes Road
Cutchogue, N. Y.
Tel. 734-5010

**Reeve Lumber &
Woodworking Co., Inc.**
MATTITUCK 298-4711

MILLWORK
PAINTS
LUMBER
HARDWARE

I. M. Young & Co.

Division Of
Lebanon Chemical Corporation
Riverhead, N. Y.

**Eckert
Oil Service, Inc.**
FUEL OIL
BUDGET PLANS
Mattituck, L. I.
298-4197

**Mattituck Plumbing &
Heating Corp.**

- We sell
 - We install
 - We guarantee
- 298-8393

WHO'S WHO IN THE CAST

(Continued from Page 8)

JACK REED (Dr. Montague) — Back again this season, and determined to prove his virsility. Last season—a priest and a mobster. This season—an uptight poker player in THE ODD COUPLE and now a psychic investigator. He has been active in the theatre since his days with the Orient Players. He's now a member of the NFCT Board of Directors. Jack tells me we'll be able to find him this Spring at the Soundview Restaurant keeping customers instead of audiences happy.

(Continued on Page 18)

“ See The Man From VALLEY NATIONAL ”

For All Your Banking Needs
22 OFFICES

Serving All Of
SUFFOLK and NASSAU
Member FDIC

238 Main Street

Greenport, New York

Southold Liquor Store

Wines and Liquors

Main Road Southold, L. I.

Tel. 765-2221

Henry Smith

PLUMBING & HEATING

Southold, New York

MARINE MIDLAND — TINKER NATIONAL BANK

The Action Bank With More Interest To You,
Serving Suffolk County . . .

Port Jefferson Station * East Setauket * Centereach
Patchogue * Rocky Point * Southampton * South Setauket
Brentwood * Smithtown * Middle Island

Member Federal Deposit Insurance Corporation

Federal Deposit Insurance Is Now Increased To \$15,000

Mullen Motors, Inc.

CHRYSLER — PLYMOUTH

Sales & Service

East Main St. Southold, N. Y.

Tel. 765-3564

Tel. 477-1906

FLEET LUMBER INC.

“For Good Measure”

ROUTE 25

GREENPORT

Arcade Telephone: 477-1440
Dept
Store

FRONT, MAIN and ADAMS STREET, GREENPORT

WHO'S WHO IN THE CAST

(Continued from Page 16)

PATSY TUCKER (Theodora) — Has been wooing audiences from Turkey to New York since schooldays. She has been involved in several productions on the NFCT stage. Her most recent credit — Director of this season's very successful THE ODD COUPLE. Outside the theatre she teaches the 4th grade at Greenport High School, and is an accomplished pianist. Patsy makes her home in East Marion. She is going to be Musical Director for the Spring production "MAN OF LA MANCHA". A very talented girl.

(Continued on Page 20)

GEORGE L. PENNY, INC.

LUMBER and
BUILDING MATERIALS

Over 75 Years of Building
Supply Service

MATTITUCK - GREENPORT

298-8559

477-0400

FRANK MURPHY GARDEN CENTER & FLORIST

FLOWERS FOR
ALL OCCASIONS

— LANDSCAPING —

Main Road, Mattituck

298-4650

COMPLIMENTS OF

RIVERHEAD SAVINGS BANK

7 West Main Street
Riverhead, New York

"Save At The Time and Temperature Sign"

●
727-3600

MEMBER F D I C

Branch Office:

East Northport, N. Y.

Lake Grove, N. Y.

Rackett's Esso Station

1100 Main Street
Greenport, L. I.

Barth's

Drug Store

Prescription Experts

Donald F. Barth, Ph. C., Prop.
32 E. Main Street 727-2125
Riverhead, N. Y.

Van's Hardware

DUTCH BOY PAINTS

Housewares & Garden Supplies

Greenport, N. Y.
477-0449

Southold Lumber Co., Inc.

Youngs Ave., Southold, L. I.

765-2552



A little goes a long way.

Don Wald's

Autohaus
CORP.

**ROUTE 58
RIVERHEAD, L. I., NEW YORK**

WHO'S WHO IN THE CAST

(Continued from Page 18)

MARION BEATON (Mrs. Dudley) — Lives in West Hampton Beach with her two younger children, Tom and Becca, she has another son, Jay, who lives in East Quogue. She is active in the Southampton Town Conservative Club and is First Vice President of St. David's Parents Association. Before joining the NFCT, this year, she belonged to the Mill Road Players and appeared with that group as Helen in JOURNEY TO THE DAY. Marion tells me she grew up in a haunted house in Brooklyn.



Restaurant & Cocktail Lounge
Main St., Greenport 477-2000

hope and connie's
gift mart

greenport, n. y.

Let us share with you
the joy of giving

Kouros Camera Shop

**Automatic - Movie And
Still Cameras**

**Dependability & Service
Is Our Motto**

Tel. 298-8864

Main Road Mattituck

Raymond F. Nine

RUBBISH REMOVAL

"Service is fine
When you call Nine"

New Suffolk Ave. Mattituck
298-8828

Your Local Community Bank

**THE SUFFOLK
COUNTY NATIONAL
BANK**

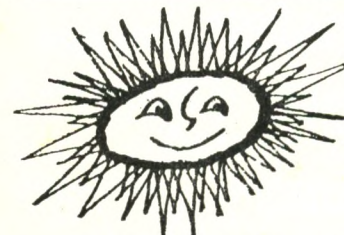
Cor. of 2nd St. & Roanoke Ave.
RIVERHEAD, NEW YORK

Montauk Highway
HAMPTON BAYS

Route 25-A & Manor Road
WADING RIVER
Ample Parking

Drive-in Windows

MEMBER F. D. I. C.



**Something to give
to Somebody Special**

(... and don't forget yourself)

**... a vacation in the sun. Let us do
the arranging for you. We'll plan a bright
vacation to fit your mood and budget.**

Greenport Travel Agency, Inc.

120 Front Street

477-0777

FRANKLIN NATIONAL BANK

RIVERHEAD, N. Y.

MEMBER FEDERAL DEPOSIT INSURANCE CORP.

COLONIAL VILLAGE AT SOUTHOLD

One and two bedroom Garden Apartments, Permanent living for persons of mature age in a private community nestled in the heart of the charming historic Village of Southold. Short walk to shops, churches, etc.

Main St. At Ann's Way
Southold, New York
Tel. 765-3436

Southold Hardware

**Sherwin-Williams &
Keystone Paints**

Mowers — Sales & Service
Tel. 765-2277

Compliments Of
**Colonial
Liquor Store**

LOVE LANE
MATTITUCK, N. Y.
298-4650

Washington White's Sons

Hardware Marine Supplies Paint Tools
120 Main Street Greenport, N. Y.
Telephone 477-0317

Tappert's Bookshop

STATIONERY BOOKS PRINTING
24 Front Street Greenport, L. I. 11944 Tel. 477-0206



DRESSES - LOUNGE-WEAR
LINGERIE

**Leisurely
Yours
by
Judith**

**FOR THAT
SPECIAL
Look Of LEISURE
For You And Yours**

Hours 10:00 to 5:00

Southold, L. I.

Tel 765-1660

C. P. Tuthill, Inc.

**Plumbing - Heating
Oil Burners**

**Quality Paints, Varnishes and Supplies
Water Systems**

Tel. 734-6779

**Rothman's
DEPARTMENT STORE
GENERAL ELECTRIC
APPLIANCES & TELEVISION**

"THE FINEST IN
MERCHANDISE and SERVICE"

REAL ESTATE & INSURANCE

**Russell P. Silleck
Agency**

**Main Street Cutchogue, N. Y.
734-6472**

**If no answer call 734-6024
Flora S. Luce Walter F. Luce**



**Massachusetts Mutual
Life Insurance Co.**

298-9103 289-5500

**Wendy
Fabric
Shop**

**CUSTOM MADE SLIPCOVERS
& DRAPES**

Route 58 Riverhead, N. Y.
**Riverhead Shopping Plaza
727-3525**

NORTH FORK SHIPYARD

The North Fork's Largest and Fastest Growing Boat Sales and Service Offers Everything For The Yachtsman.

See Us For All Your Boating Needs.

CONCORDE FIBERGLASS—27 ft. to 47 ft.

LUHRS SEA SKIFFS—All Fiberglass & Wood & Fiberglass
25ft. to 38 ft.

SEA RAY—Fiberglass Boats

ULRICHSEN SEA SKIFFS—33 ft. to 37 ft.

USED BOATS

MARINE STORE

SERVICE

STORAGE

MARINA

Visit Our Galley-Ho Restaurant —
Overlooking Peconic Bay.

Located at Foot of Main St., New Suffolk

734-6330 — 734-6350

PRODUCTION STAFF

Director Lou Padavan
Assistant Director Dave Detrich
Producer Maureen Cahill
Set Design Hal Young
Set Construction Hal Young, Christopher Young
Clacia Young
Set Decoration Joan Vaitis
Assistants Mary Beth Romeo, Maura Cahill,
Carmen Sweeney, Holly Seaman, Ed Vaitis,
Steven Sweeney, Alice Carr, Joe Nolan,
Jules Lawrence, Michael Stein
Properties Loretta Hess, Barbara Jazombek
Stage Manager Bob Ackroyd
Stage Crew Bob Register, Joe Nolan, Marge Moffat,
Pete Sweeney, Chris Young, Chuck Bondi,
Fanny Behlen, Ed Graham
Lighting Don Fisher, Jac Saffer
Sound Recording and Effects Ched Baker, Patrick Cahill
Costumes Judy Schneider, Annette Lieblein
Wardrobe Mistresses Susan Romeo, Debbie Schneider
Make-up Muriel Winters
Make-up Assistants Robin Ackroyd, Jeanne Arnold,
Faye Parrish, Eleanor Pappas
Program Editor Marge Moffat
Program Cover Joan Vaitis
Advertising Chairman Anne Richmond
Ticket Manager Mary Register
Box Office Ruth Becker, Christine Cahill
Awards Pat Seaman
Hospitality Lita Bollman, Marge Moffat
Casting Bill Hess, Vera Cowan,
Betty Hagerman, Bill Price
House Manager Ed Morganstern
Ushers Linda and Joanne Szymanowski, Barbara Clay,
Pam Greinke, Laura Akscin, Kathy Muzinic,
Chris Register, Kathy Cahill
Publicity Maureen Cahill
Publicity Assistants Les Hart, Jon Richmond,
Joan Vaitis, Tony Dobek

ABOUT THE DIRECTOR

LEW PADAVAN — Has been active with the NFCT for several years. He appeared on stage in THE CRUCIBLE, KISS ME KATE and THE POTTING SHED before leaving us to do graduate work at C. W. Post. During his two year absence he formed the Mill Road Player in Westhampton and acted and directed for them. He joined us again this year to do the part of Vinnie in THE ODD COUPLE. Lew lives in Remsenburg with his wife and their four sons and teaches English and Latin at Westhampton Beach High School.

ABOUT THE PRODUCER

MAUREEN CAHILL — A most efficient woman. She runs her household of 12, various community youth activities and the production of this show, all with apparent ease. She's been involved, either on stage or behind the scenes in almost every play since she joined the group four years ago. This Fall she did the part of Gwendolyn Pidgeon in THE ODD COUPLE and plans to be Assistant Director for MAN OF LA MANCHA. Between performances she helps keep the theatre running—smoothly as a member of the Board of Directors. When Maureen becomes interested in a production she manages to infect most of her family with the theatre. Her son, Patrick, is on the Lighting Crew and she even has her 6 year old daughter helping with sound effects.

SPECIAL THANKS TO —

Judy Utter

and Hughes Antiques

For the gracious loan of some of the furniture & props used in this set.

BOOSTERS

WALTER DOHM

HOWDY VALENTINE

HULL TUTHILL