

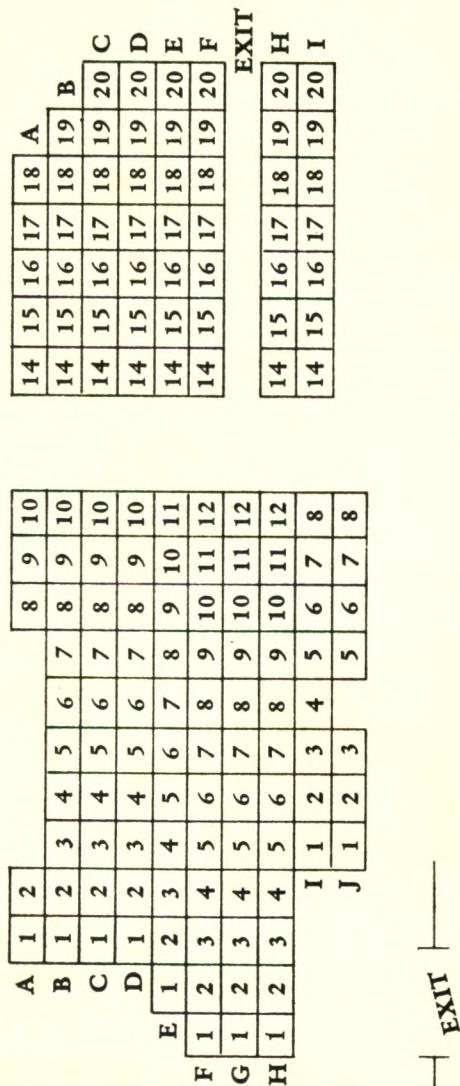
THE LITTLE MOON OF ALBAN



by
John
Costigan
1970

STAGE

EXIT



EXIT

FIRE NOTICE: The exit indicated by a red light and sign nearest to the seat you occupy is the shortest route to the street in the event of fire or other emergency. Please do not run — WALK to the exit.

INTRODUCTION

We are going to depart from the usual format of this section in this program. In the past we have given a "blurb" to each of the actors, but some of us have been in so many plays that we feel you know us already.

We are very happy to say that we have many new faces on stage for this production, so we are going to give them the space. For our old guard — well we are going to list their favorite parts.



A unique shop featuring fine table accessories, china, crystals, pewter, linens and WEDGWOOD jewelry.

THE WEDGWOOD SHOP

ROUTE 27A (North Road)

SOUTHOLD, N. Y.

765-2000

WHO'S WHO IN THE CAST

FRANK STEELE (Patch) — We will just list Frank's credits, and you will understand why we feel that we have a great find in this member of the NFCT. 147th production — acted — worked — directed. Member: Pittsburgh Playhouse, Red Barn Theatre (Pittsburgh), Indiana State College Summer Theatre, Pittsburgh Players, Pittsburgh Savlyatds, Educational T.V., Toured with U. S. O. for three months — Attended University of Pittsburgh, Indiana State University, Penn State University, and is now working on Master's Degree at Hofstra. English teacher, father of three. Whew —

(Continued on Page 5)

Compliments of

**GREENPORT
I G A**

GOLDSMITH'S BOAT SHOP, INC.

EVINRUDE MOTORS

**Stamas Boats — M. F. G. Boats
Duranautic Boats
Pioneer Chain Saws**

**Southold New York
516 765-1600**

OYSTERPONDS HISTORICAL SOCIETY

VILLAGE LANE, ORIENT

Colonial and Victorian buildings housing a unique display of Local Sea & Land memorabilia covering a period from early Indian encampments to turn-of-the-century farms.

Open: July, August, September

KALIN FLORISTS



GARDEN CENTER

**GREENPORT
477-0618**

COMPLIMENTS

OF

A FRIEND

THE

OSPREY SHOP

MAIN ROAD — ORIENT

Located in Orient, A Special Place
So We Have To Be
Refreshingly Different
Fine gifts and home accessories

Tel. 323-2420

SOUTHOLD SAVINGS BANK

"HOME FOR SAVINGS SINCE 1858"

Southold, N. Y.

Member Federal Deposit Insurance Corp.

The Suffolk Weekly Times

Printing & Publishing

Greenport, N. Y.

Since 1857

Official Paper For
Town Of Southold
Village of Greenport

HART HARDWARE

Dutch Boy Paints

Wallpaper

Southold, N. Y.

765-2122



WHO'S WHO IN THE CAST

(Continued from Page 2)

ART WILKS (Dennis Walsh)—Damn Yankees — Peanut Butter Prince — Kiss Me Kate.

PAUL TRAUTMAN (Tom Phinney) — Paul is a senior X-ray student at Central Suffolk, Eastern Long Island Hospitals. He has appeared in the NFCT's productions of "The Happy Time" and "Absence of a Cello." Paul is part of the youth movement in the group. Some of us oldsters are surely glad to have his youthful enthusiasm around.

(Continued on Page 6)

Early American Homes

George Ahlers, Builder

Eugenes Road
Cutchoque, N. Y.

Tel. 734-5010

Compliments of

Russell E. Mann

Oscar Goldin

Auctioneer - Appraiser

Real Estate Broker

441 Main Street
Greenport, L. I., N. Y.

Tel. 477-2220

Village Liquors

Main Street Southold, N. Y.

Free Delivery 765-5434

See Our Spring Production

"BELLS ARE RINGING"

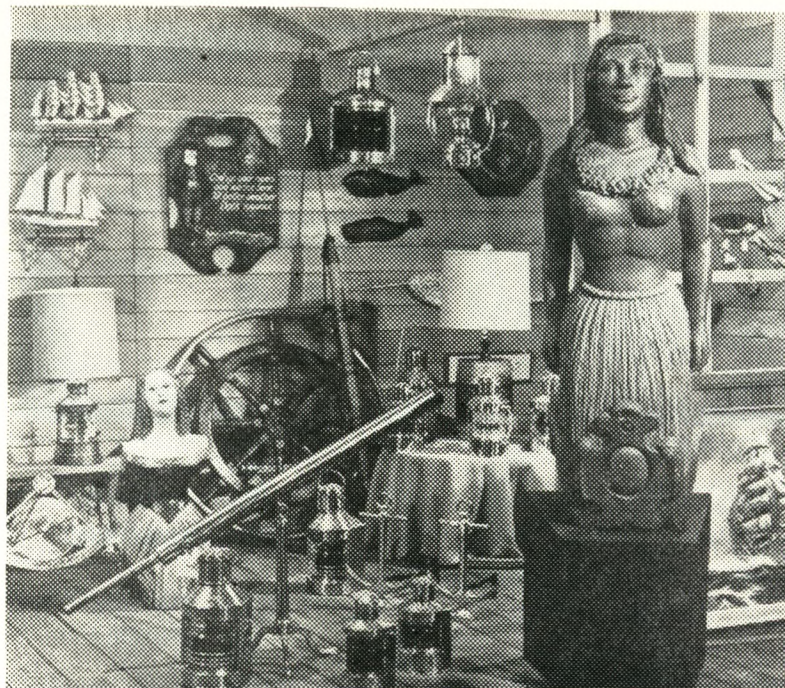
WHO'S WHO IN THE CAST

(Continued from Page 5)

BOB ACKROYD (Sergeant Reynolds) — Little Foxes — Jack in a Box.

CLACIA YOUNG (Shelagh Mangan) — President of NFCT. That in itself is a mighty big credit. She is fantastic.

(Continued on Page 10)



**A STORE for THOSE WHO LOVE
SHIPS and the SEA**

For Your Boat:

One of the **LARGEST** and **MOST COMPLETE**
stocks of marine supplies in Eastern Long Island

Nautical Items for your home:

- SHIP MODELS ● FIGUREHEADS
- NAUTICAL PRINTS & PICTURES
- COPPER SHIP'S LIGHTS ● MODEL BRASS CANNONS
- ESKIMO CARVINGS ● HANDCRAFTED POTTERY

PRESTON'S
at Main Street Wharf
Greenport, Long Island, N.Y.

11944

Tel: 516 477-1990

Since 1882



Ralph W. Sterling

Seeds, Plants, Nursery Stock
Landscaping, Garden Supplies
Cut Flowers

Main Road
Cutchogue, L. I., N. Y.
734-6755

**Associated
Supermarket**

Second St. New Suffolk
Tel. 734-6567

An Individually Owned
Supermarket With Personal
Service

SPECIAL THANKS TO —

EASTERN LONG ISLAND HOSPITAL

GRISWOLD-TERRY-GLOVER POST, AMERICAN LEGION, POST 803

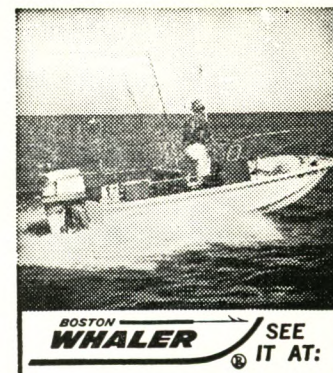
**McMANN - PRICE
AGENCY
INSURANCE**

Call "Bill" Price

238 Main Street

Greenport, N. Y.

Tel. 477-1680



Main Rd., Route 25
Southold, L. I., N. Y.
765-3131

Johnson and Bearcat Motors

COMPLIMENTS OF

FISHERMEN'S REST

Famous For

ITALIAN FOOD — PIZZA PIES

VEAL PARMESAN

CHICKEN CACCIATORA

SERVING LUNCHEONS — 11:30 to 4:00

DINNERS — 4:00 to 11:00

WEDNESDAY IS LADIES' DAY

MAIN ROAD

CUTCHOGUE, L. I.

734-5155

WHO'S WHO IN THE CAST

(Continued from Page 6)

PAT SEAMAN (Brigid Mary Mangan) — "Patsy" is a 10 year member of the NFCT. She has had many fine moments in musicals and comedies. This is her first dramatic part and we know you'll agree with us that she should have done some drama for us before. She likes to be remembered as the original Princess-Witch in "The Peanut Butter Prince."

(Continued on Page 18)

" See The Man From VALLEY NATIONAL "

**For All Your Banking Needs
22 OFFICES**

Serving All Of
SUFFOLK and NASSAU
Member FDIC

238 Main Street

Greenport, New York

Southold Liquor Store

Wines and Liquors

Main Road Southold, L. I.

Tel. 765-2221

Henry Smith

PLUMBING & HEATING

Southold, New York

ON STAGE

"THE TOTAL ELECTRIC HOME"

Clean, quiet and efficient as electric light . . . that's electric heat.

You don't have to store it or wait for it to be delivered. And since there's no soot, you'll find yourself painting much less often. That's just one of the ways electric heat saves you time and money.

For the first time you can dial the right temperature for each room, because you may have a thermostat for each room. It can be 65° in the kitchen and 72° in the baby's room at the same time.

Call your LILCO representative and join the many Long Island families who are living better electrically.

LILCO
LONG ISLAND LIGHTING
AN INVESTOR-OWNED, TAXPAYING COMPANY

Martin's Gifts

Front St. Greenport, N. Y.
Tel. 477-2010

Opposite Mitchell's Restaurant
Ethel & Jim Martin

**THIS SPACE
COULD
BE
YOURS**

SOUNDVIEW Restaurant and Cocktail Lounge

PIANO BAR

North Road (27A)
Bet. Greenport & Southold
Long Island, N. Y.
Tel. 477-9840

Eastern Suffolk's First Radio Station
And Still Number ONE

WRIV

1390 AM RADIO

RIVERHEAD

LONG ISLAND, N. Y.

GEORGE L. PENNY, INC.

Lumber and Building Materials

OVER 80 YEARS OF BUILDING SUPPLY SERVICE

MATTITUCK

298-8559



GREENPORT

477-0400

COLONIAL LIQUOR STORE

WE DELIVER

LOVE LANE

MATTITUCK, N. Y.

298-4650

FRANK MURPHY GARDEN CENTER & FLORIST

FLOWERS FOR
ALL OCCASIONS

— LANDSCAPING —

Main Road, Mattituck

298-4650

THE FACULTY

WEDDING? — PARTY?

DANCE?

Need A Combo

Call A. Wilks — 765-3974

or

Ken Hollowell

John W. Duryee

Hardware — Marine Equipment

House Furnishings — Paints

G. E. Appliances

Love Lane Mattituck, N. Y.

298-8420

North Fork Oil Heat

Fred Siemerling, Prop.

Petroleum Products Distributors

Heating & Plumbing Installations

298-8219

298-4764

Westphalia Road, Mattituck

EDITOR'S MESSAGE

Here we are again. Welcome to the best theatre on the North Fork (in our opinion, the best east of Broadway, but we may be just a bit prejudice.) In writing this we think of the years we have spent with the NFCT. They have been good in many ways, but the most important way of all is — friends. The people from "the group" are truly special people. They come from various fields and various places, but there is a mutual bond that seems to tie us altogether. We, like most groups, don't always see eye to eye, but when the curtain goes up — we are the NFCT. Why don't you become part of us? There is work, fun, laughter, tears and most of all people.

ART WILKS

MARINE MIDLAND — TINKER NATIONAL BANK

The Action Bank With More Interest To You,
Serving Suffolk County . . .

Port Jefferson Station * East Setauket * Centereach
Patchogue * Rocky Point * Southampton * South Setauket
Smithtown

Member Federal Deposit Insurance Corporation
Federal Deposit Insurance Is Now Increased To \$15,000

Mullen Motors, Inc.

Tel. 477-1906

CHRYSLER — PLYMOUTH

Sales & Service

East Main St. Southold, N. Y.

Tel. 765-3564

FLEET LUMBER Incorporated

"For Good Measure"

Main Road

Route 25

Greenport, L. I.

arcade

Front, Main &
Adams Streets
Greenport

Dept. Store Tel. 516 - 477-1440

Try The Arcade First And Get The Most
Out Of Your Shopping Mileage

**COLONIAL
DRUGS
GREENPORT**

OPEN

MONDAY THRU SATURDAY
8:30 A. M. - 9:00 P. M.

SUNDAYS
9:00 A. M. - 2:00 P. M.

Silkworth
INC.

REAL ESTATE & INSURANCE

ANNOUNCING OUR 57th
ANNIVERSARY

OVER A HALF CENTURY OF
SERVICE, 1913 — 1970

Realistic Value Listings

Always Welcome

OFFICE - MAIN ROAD

Tel. 298-4747

16

**THE NORTH FORK
COMMUNITY THEATRE**

Presents

Little Moon of Alban

By James Costigan

By special arrangement with Samuel French, Inc.

Directed by — Dick Dries

CAST OF CHARACTERS — (As they speak)

Patch Keegan	Frank Steele
Dennis Walsh	Art Wilks
Tom Phinney	Paul Trautman
Sergeant Reynolds	Bob Ackroyd
Shelagh Mangan	Clacia Young
Brigid Mary Mangan	Pat Seaman
Lt. Kenneth Boyd	Larry Presby
Father Curran	Jack Reed
Sister Servant	Gertrude Reynolds
Sister Catherine	Mary Register
Sister Barbara	Holly Seaman
Sister Theresa	Maureen Burns
Sister Angelica	Mary Register
Sister Martha Kevin	Nancy Moyna
British Soldier	Walter Clay
Bertie	Bob Ackroyd
Private Wigan	Jon Richmond
Doctor Clive	David Detrich
1st Black and Tan	Walter Clay
2nd Black and Tan	Dan McCarthy
Convalescent Soldier	Dan McCarthy

Everybody is a little different.

Each person's needs are a little special.

Why do they all have to fit into the same package?

They don't.

HAL YOUNG

Designer - Builder

PA 7-4927

**Wines and
Liquors
for your Party!**



765-3260

17



A little goes a long way.

Don Wald's

Autohaus
CORP.

**ROUTE 58
RIVERHEAD, L. I. NEW YORK**

WHO'S WHO IN THE CAST

(Continued from Page 10)

LARRY PRESBY (Lt. Kenneth Boyd) — Larry is a newcomer to NFCT but not to theatre. In college he did technical work and acted in such plays as Candida, Beyond the Horizon and Our Town.

Later he appeared in summer stock in Lincoln, New Hampshire. Here he played roles in Charlie's Aunt, George Washington Slept Here, The Tavern, The Cat and the Canary and See How They Run. Larry has been an active director of high school drama groups for the past 12 years in both Sayville and Southold high schools.

Presently he lives in Reydon Shores with his wife, Rosemarie and 3 children. We have been trying to get Larry into the group for quite some time. We're sure glad he finally said yes.

(Continued on Page 21)

THE PRESIDENT'S MESSAGE

This time we are not letting the President write a message. We are, instead, writing about her. Clacia Young is one of those people who works till they drop and then try to get up to do more. During this production she actually left a sick bed to come to rehearsals and conduct meetings. What makes her even more marvelous is that she is a dedicated wife and mother first and still finds time to run the NFCT. Though she does not use an iron hand she has that special way of asking that you just can not refuse. Her last name explains it all, for it is just what she is in every way.

**Reeve Lumber &
Woodworking Co., Inc.**

MATTITUCK 298-4711

MILLWORK

PAINTS

LUMBER

HARDWARE

Boosters

A Friend

The Love Lane Shop

Huli Tuthill

Mr. Marty's Hole in the Wall

Youth Fair

Rolie Bros.

Walter Dohm

Howdy Valentine

**Eckert
Oil Service, Inc.**

FUEL OIL

BUDGET PLANS

Mattituck, L. I.

298-4197

**Mattituck Plumbing &
Heating Corp.**

- We sell
- We install
- We guarantee

298-8393



12130 MAIN ROAD (Route 25)

MATTITUCK, N. Y.

FREDDIE and MILLIE DeLUCIA

SPECIALIZING IN

ICE CREAM CAKES

For Birthdays and ALL Special Occasions

PARTY FAVORS

Look For Our Weekly Specials

20% Discount On Group Orders

WHO'S WHO IN THE CAST

(Continued from Page 18)

JACK REED (Father Curran) — (who is with us when he isn't traveling!) The Foxes — Jack in the Box, — Orient Players: Sabrina, The Mouse That Roared — Third Best Sport — formerly Plum Island now Long Island Oyster Farms, Inc.

GERTRUDE REYNOLDS (Sister Servant) — We could mention many roles that she has played for NFCT, but Mary in "Mary Mary" keeps coming to mind. It was almost as if the part were written with "Tru" in mind. She, in one word, is a lady.

(Continued on Page 22)

Rackett's Esso Station

1100 Main Street

Greenport, L. I.

Richter HOME IMPROVEMENT CO.

515 7th St., Greenport, N. Y.

477-0998

477-1339

Established 1880

Wm. J. Mills & Co.

AWNING-MAKERS &
SAIL-MAKERS

477-1500

125 Main Street

Greenport

Southold Lumber Co., Inc.

Youngs Ave., Southold, L. I.

765-2552



Restaurant & Cocktail Lounge
Main St., Greenport 477-2000

727-3620 Sag Harbor 5-1440

R. & M. Electric Supply Co.

Wholesale Distributors
Lighting Fixtures & Supplies
Electric Heating Center

454 Riverleigh Ave., Riverhead

WHO'S WHO IN THE CAST

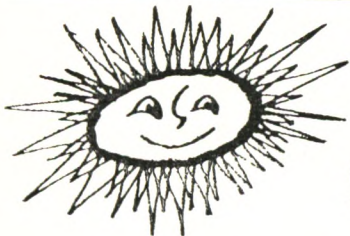
(Continued from Page 21)

MARY REGISTER (Sister Catherine) — Mary is a newcomer to NFCT, as well as the community of Southold. Her first appearance on any stage was in last fall's production of "A Thurber Carnival."

She is the mother of three active boys. Her husband, Bob, is stage manager for this production.

HOLLY SEAMAN (Sister Barbara) — New member, first active part in NFCT — 3rd year student at Riverhead High School — attending NFCT productions since age of 7 — RHS cheer leader, hopes for nursing career, youth group president, horseback rides.

(Continued on Page 25)



Something to give
to Somebody Special

(. . . and don't forget yourself)

. . . a vacation in the sun. Let us do
the arranging for you. We'll plan a bright
vacation to fit your mood and budget.

Greenport Travel Agency, Inc.
120 Front Street

477-0777



DRESSES - LOUNGE-WEAR
LINGERIE

Leisurely
Yours
by
Judith

FOR THAT
SPECIAL
Look Of LEISURE
For You And Yours

Hours 10:00 to 5:00

Southold, L. I.

Tel 765-1660

Van's Hardware

DUTCH BOY PAINTS

Housewares & Garden Supplies

Greenport, N. Y.

477-0449

S. Harding & Sons

FURNITURE — BEDDING

CARPETS

Riverhead, N. Y.

727-2064

COMPLIMENTS OF

RIVERHEAD SAVINGS BANK

7 West Main Street

Riverhead, New York

"Save At The Time and Temperature Sign"

727-3600

MEMBER F D I C

Branch Office:

2835 Old Country Rd., Lake Grove, N. Y.

FRANKLIN NATIONAL BANK

RIVERHEAD, N. Y.

MEMBER FEDERAL DEPOSIT INSURANCE CORP.

COLONIAL VILLAGE AT SOUTHOLD

One and two bedroom Garden Apartments, Permanent living for persons of mature age in a private community nestled in the heart of the charming historic Village of Southold. Short walk to shops, churches, etc.

Main St. At Ann's Way
Southold, New York
Tel. 765-3436

FOR THE GIFT OF LOVE GIVE
HER DIAMONDS

KALLER'S *JEWELRY STORE*



27 East Main Street
Riverhead, N. Y.
727-4099

Washington White's Sons

Hardware Marine Supplies Paint Tools
120 Main Street **Greenport, N. Y.**
Telephone 477-0317

Tappert's Bookshop

STATIONERY BOOKS PRINTING
24 Front Street **Greenport, L. I. 11944** **Tel. 477-0206**

Greenport Auto Sales

FORD—MERCURY—TRUCKS

125 Front Street
Greenport, New York
A-1 Used Cars

Barth's Drug Store

Prescription Experts

Donald F. Barth, Ph. C., Prop.
32 E. Main Street 727-2125
Riverhead, N. Y.

GREENPORT CARPET CO.

434 MAIN STREET

Tel. 477-0940

GREENPORT, N. Y.

Div. of GOLDIN FURNITURE CO., INC.

BROADLOOMS — FAMOUS BRANDS

Shop and Compare — We know you will buy here
WE INSTALL

WHO'S WHO IN THE CAST

(Continued from Page 22)

MAUREEN BURNS (Sister Theresa) — Maureen has appeared mainly in our musicals: as "There Comes a Time," "Jack in a Box" and many others. Anyone who has ever heard her voice knows why we are always cheered when she tries out. Maureen lives in Southold, when she is not busy on the road in connection with her vocal career.

JON RICHMOND (Private Wigan) — Since joining the NFCT two seasons ago, Jon has constructed sets, done lighting, and handled publicity while serving on the Board of Directors. He has appeared in two productions, as Shep in "Bell, Book and Candle," and as Leo in "Little Foxes". Jon and his wife, Anne, will be directing the Spring production of "Bells Are Ringing." They will be assisted by their infant daughter, Eleanor Anne.

(Continued on Page 27)

The NORTH FORK
... BANK & TRUST CO. ...

MATTITUCK
CUTCHOGUE



SOUTHOLD
GREENPORT

JAMESPORT
SHELTER ISLAND HEIGHTS

PONTIAC CADILLAC

For 1970

VAIL BROTHERS, INC.

PECONIC LANE and ROUTE 25

PECONIC, L. I.

765-3050

734-6774

"USED CARS THAT MAKE FRIENDS"

WHO'S WHO IN THE CAST

(Continued from Page 25)

NANCY MOYNA (Sister Martha Kevin) — Nancy has resided in Orient with her parents and 5 year old daughter, Christine, since September. Prior to that she lived at the Jersey Shore. She graduated from Endicott Jr. College and took part in several shows presented there. This is her first role in a theatre presentation. She has worked and lived in Las Vegas, Nevada as an airline representative and is presently employed as a substitute teacher in Greenport High School.

WALTER CLAY (1st Black and Tan) — Before being drafted by the British Army for Little Moon of Alban he worked backstage and appeared as the anesthetizing machine in Thurber Carnival. He also had a role in this year's senior play at Southold High School, where he is a student in his spare time. If everything works out as planned, he should be studying political science at Yale this time next year.

(Continued on Page 29)

hope and connie's
gift mart

greenport, n. y.

Let us share with you
the joy of giving

Kouros Camera Shop

Automatic - Movie And
Still Cameras

Dependability & Service
Is Our Motto

Tel. 298-8864

Main Road

Mattituck

Tommasini
Kitchen
Cabinets

Modernized, Installed, Financed

APPLIANCES - TV's-
STEREOS

1179 Route 58
Riverhead, N. Y.

727-4332

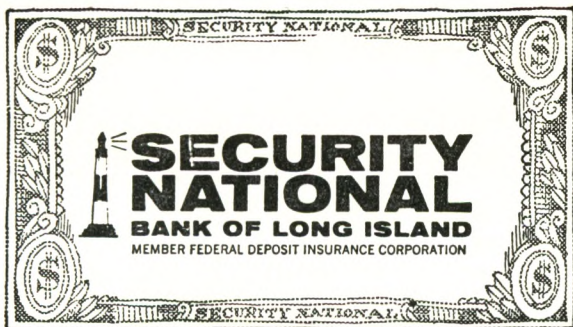
Raymond F. Nine

RUBBISH REMOVAL

"Service is fine
When you call Nine"

New Suffolk Ave. Mattituck

298-8828



UNFINISHED FURNITURE
COMPLETE KITCHENS

FINISHED FURNITURE
COMPLETE BATHROOMS

FLAXMAN'S FURNITURE CORP.

131 PECONIC AVENUE

RIVERHEAD, N. Y.



A Hotel and Motor Lodge
RIVERHEAD, LONG ISLAND

727-1000

LUNCHEON & DINNER SERVED DAILY

FABULOUS SMORGASBORD
SERVED SUNDAYS
1 P. M. - 9 P. M.

BANQUET FACILITIES FOR
ALL OCCASIONS

Groups 15 - 300

THE LONG ISLAND TRAVELER MATTITUCK WATCHMAN

"HOME NEWSPAPER OF THE NORTH FORK"

SOUTHOLD, N. Y.

Sunrise Coach Lines, Inc.

DAILY SERVICE
Greenport - Riverhead - East Hampton
Write for schedule
DELUXE COACHES FOR
ALL CHARTER OCCASIONS
West Front St., Greenport, N. Y.

477-1200

If no answer call 477-0823

I. M. Young & Co.

Division Of
Lebanon Chemical Corporation

Riverhead, N. Y.

WHO'S WHO IN THE CAST

(Continued from Page 27)

DAVE DETRICH (Dr. Clive) — Stage Manager — Kiss Me Kate — There Comes A Time — Bell, Book and Candle — Jack in a Box — Blythe Spirit (Dr Bradford) — Call Me Madam (Duke Otto).

DAN McCARTHY (2nd Black and Tan)—One of the younger generation member of our group. Dan brings to the theatre a fine background. He has just completed the lead role in "The Man Who Came To Dinner" at Southold High School. He is one of those rare young men who can fill in with us over 30's and still be with it when among his own age group. We are glad he is with us at least part of the time.

REAL ESTATE & INSURANCE

Russell P. Silleck
Agency

Main Street Cutchogue, N. Y.

734-6472

If no answer call 734-6024

Flora S. Luce Walter F. Luce

Wendy
Fabric
Shop

Abe Millman, Prop.

Route 58 Riverhead, N. Y.

Riverhead Shopping Plaza

727-3525

Your Local Community Bank

**THE SUFFOLK
COUNTY NATIONAL
BANK**

Cor. of 2nd St. & Roanoke Ave.
RIVERHEAD, NEW YORK

Route 25-A & Manor Road
WADING RIVER

Ample Parking

Drive-in Windows

MEMBER F. D. I. C.

MITCHELL'S

RESTAURANT

Main Street, Greenport, N. Y.

C. P. Tuthill, Inc.

Plumbing - Heating
Oil Burners

Quality Paints, Varnishes and Supplies
Water Systems

Tel. 734-6779

Rothman's

DEPARTMENT STORE

GENERAL ELECTRIC
APPLIANCES & TELEVISION

"THE FINEST IN
MERCHANDISE and SERVICE"

Barker's

Pharmacy, Inc.

MATTITUCK, N. Y.

Boosters

Hull Tuthill
Richard York Shoes
Mr. Marty's Hole In the Wall
Youth Fair
Rolle Bros.
Walter Dohm
Howdy Valentine

SEE THE NEW

CHEVROLET

OLDSMOBILE

AT

O'KEEFE

CHEVROLET - OLDS, INC.

EAST MAIN STREET ON ROUTE 25

RIVERHEAD

30

SCENES

City Of Dublin

& Vicinity

October 1919

To

January 1922

31

NORTH FORK SHIPYARD

The North Fork's Largest and Fastest Growing Boat Sales and Service Offers Everything For The Yachtsman.

See Us For All Your Boating Needs.

CONCORDE FIBERGLASS—27 ft. to 47 ft.

LUHRS SEA SKIFFS—All Fiberglass & Wood & Fiberglass
25ft. to 38 ft.

SEA RAY—Fiberglass Boats

ULRICHSEN SEA SKIFFS—33 ft. to 37 ft.

USED BOATS

MARINE STORE

SERVICE

STORAGE

MARINA

*Visit Our Galley-Ho Restaurant —
Overlooking Peconic Bay.*

Located at Foot of Main St., New Suffolk

734-6330 — 734-6350

PRODUCTION STAFF

Director Dick Dries
Assistant Director Vicky Witherspoon
Co-Producers Muriel Winters, Loretta Hess
Set Design John Wissemann
Set Construction Bill Hess
Assistants.....Jac Saffer, Bill Taylor, George McCarthy,
Bob Rothman
Set Decoration Micki Rosenthal
Assistants..... Audrey Rothman, Fran Osmer,
Cathy O'Brien
Properties Mary Register
Assistants Mary Bambach, Annette Lieblein
Stage Manager Bob Register
Assistants—Dick Warrington, Margery Moffat, Cindy Ackroyd,
Greg Moffat, Jac Saffer, Walter Clay
Lighting Jack Seaman
Assistant Betty Hagerman
House Manager Blanche Corovessis
Assistant Richard Corovessis
Make-up Linda Burke
Assistants.....Maureen Cahill, Joan Lyons, Holly Seaman,
Chris Cahill, Cathy Cahill
Costumes Ruth Becker
Assistants Beth Proom, Het Dries, Helen McCarthy,
Cindy Ackroyd, Margery Moffat
Program Cover Sally Reybine
Box Office Eve Saffer
Assistant Patsy Tucker
Ticket Manager Dorothy VandeWoude
Awards Chuck Bondi
Assistants Anne Richmond, Patsy Tucker
Hospitality Eve Saffer
Publicity Jon Richmond
Assistants..... Corky Hart, Anne Richmond,
Anne Sutherland, Tony Dobek
Sound Effects Jon Richmond
Assistants.....Anne Richmond, Margery Moffat, Linda Graham,
Sandy Nelson, Dot Fleischman, Steve Reed, Carl Campbell
Special Effects Syd Breese
Script Typing Anne Sutherland
Casting Hal Young
Assistants.....Ruth Becker, Barbara Jazombek,
Dick Dries, Jim Lull
Ushers.....Cathy Cahill, Chris Cahill, Pat Cahill, Richard Corovessis,
Wayne Lyons, Lynn Lyons, Arthur Lyons, Jeanette Warrington

ABOUT THE DIRECTOR

DICK DRIES — Actor, Director, Teacher, Rancher, Gentleman, Task-master to the actors. This is Dick's first stint at Directing for the NFCT, but those of us who have been working with him hope it will not be his last. He has been thorough, complete, has had that sense of being able to get what he wants from the members of the cast. We have started on time, gotten our work done, and ended on time. From the beginning we have always felt that each night was spent in getting things accomplished. Here's hoping that this will only be the first in a long line of directing assignments for him.

ABOUT THE PRODUCERS

SIS WINTERS has given us little to write about herself (we always ask for something) so we'll just write some of the things that come to mind. She is the one person we can always count on to be smiling and trying to cheer the rest of us up. She is one of those people who are nice to have around because you know the place is going to be just that much nicer when she is.

LORETTA HESS — What can we say about Loretta, except THANKS? She has just been fantastic through this whole play. She must have finally found the 28 hour day.

Loretta Hess and husband, Bill, have followed the fortunes of NFCT since its inception, sometimes actively, sometimes not, but always with great interest. They live with their two teen-age sons in East Marion.

This is Loretta's second stint as co-producer, the last play having been, "Bell, Book, and Candle." She has tried her hand at numerous production jobs, helped write social activities of the group and served as Secretary of NFCT for one year. For the last two years she was a member of the Board of Directors.