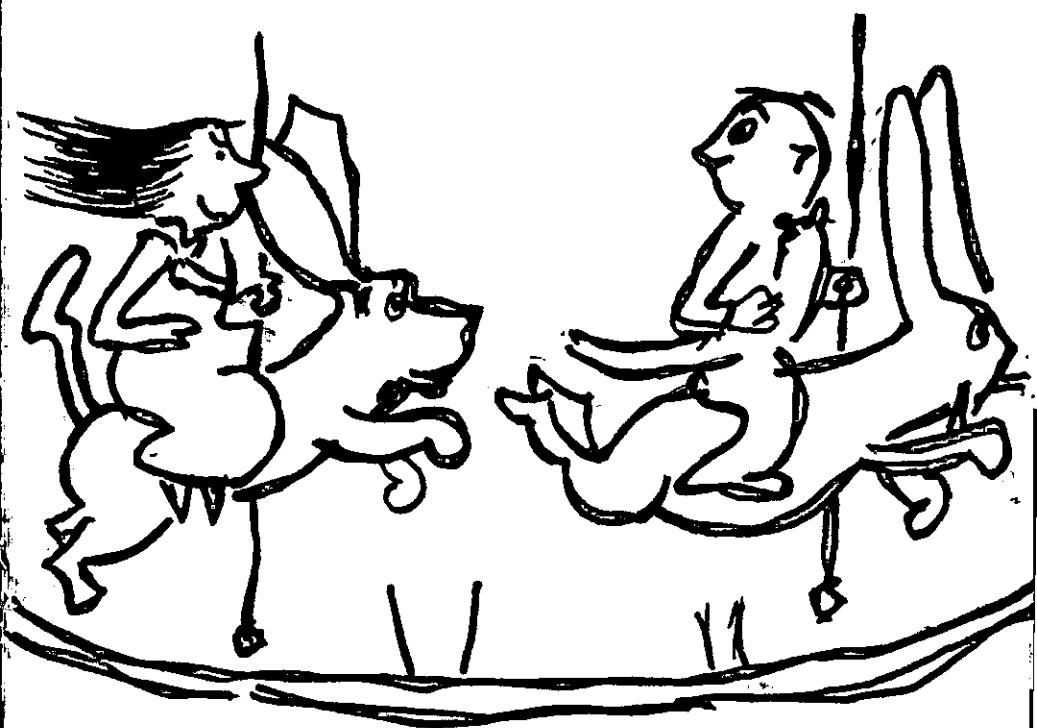


A THURBER Carnival



PRESENTED

By

NECT

1969

STAGE

EXIT

A	1	2	3	4	5	6	7	8	9	10
B	1	2	3	4	5	6	7	8	9	10
C	1	2	3	4	5	6	7	8	9	10
D	1	2	3	4	5	6	7	8	9	10
E	1	2	3	4	5	6	7	8	9	10
F	1	2	3	4	5	6	7	8	9	10
G	1	2	3	4	5	6	7	8	9	10
H	1	2	3	4	5	6	7	8	9	10
I	1	2	3	4	5	6	7	8	9	10
J	1	2	3	4	5	6	7	8	9	10

14	15	16	17	18	A
14	15	16	17	18	B
14	15	16	17	18	C
14	15	16	17	18	D
14	15	16	17	18	E
14	15	16	17	18	F
14	15	16	17	18	EXIT
14	15	16	17	18	H
14	15	16	17	18	I

EXIT

FIRE NOTICE: The exit indicated by a red light and sign nearest to the seat you occupy is the shortest route to the street in the event of fire or other emergency. Please do not run — WALK to the exit.

WHO'S WHO IN THE CAST

CINDY ACKROYD (First Woman)—Cindy, mother of four, has had extensive experience with community theater. In her home state of New Jersey she performed with the Rockaway Minstrels in a number of original productions, followed by appearances in "Come Blow Your Horn", "Crucible" and "Gigi" with the Somerset Playmakers. In addition, she edited a theatrical publication entitled "Ad Libs" for the Playmakers. Most recently she has designed the set for the NFCT production of "Little Foxes", appeared in the musical review, "Jack in The Box", and now assumes multiple roles in the current production of "A Thurbur Carnival."

(Continued on Page 5)



A unique shop featuring fine table accessories, china, crystals, pewter, linens and WEDGWOOD jewelry.

THE WEDGWOOD SHOP

ROUTE 27A (North Road)

SOUTHOLD, N. Y.

765-2000

THE PRESIDENT'S MESSAGE

One of the pleasant prerogatives of the presidency of the NFCT is that of welcoming our audiences at the opening of each season. The theatrical experience has always been a three-way partnership between playwright, interpreters and audience. A play, an actor, a listener—all may exist individually, but not until they come together do they make "theater".

The theater-goer who plunks down his dollars in return for a bit of cardboard is gambling, in a way—buying a pig in a poke. A drama production group, be it professional or amateur, ignores at its peril its obligation to make the bet good — to present its audience with a "pig" as fat and sassy, alive and well, as possible.

We hope, this year, to continue our tradition of offering our very best efforts toward the end of making that bit of cardboard worth what you paid for it. So, welcome and—Enjoy! Enjoy!

Clacia Young
President

GOLDSMITH'S BOAT SHOP, INC.

EVINRUDE MOTORS

Stamas Boats — M. F. G. Boats
Duranautic Boats
Pioneer Chain Saws

Southold New York
516 765-1600

Compliments of
**GREENPORT
IGA**

2

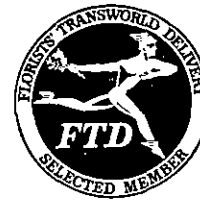
OYSTERPONDS HISTORICAL SOCIETY

VILLAGE LANE, ORIENT

Colonial and Victorian buildings housing a unique display of Local Sea & Land memorabilia covering a period from early Indian encampments to turn-of-the-century farms.

Open: July, August, September

KALIN FLORISTS



GARDEN CENTER

GREENPORT
477-0618

— for finer photographs
— for any occasion —
I'm available!

Joseph J. Bambach Photographer

* * *

The Suffolk Times
supplement is my portfolio

* * *

477-0081

323-3548

THE OSPREY SHOP

MAIN ROAD — ORIENT

Located in Orient, A Special Place
So We Have To Be
Refreshingly Different
Fine gifts and home accessories

Tel. 323-2420

3

SOUTHOLD SAVINGS BANK

"HOME FOR SAVINGS SINCE 1858"

Southold, N. Y.

Member Federal Deposit Insurance Corp.

The Suffolk Weekly Times

Printing & Publishing

Greenport, N. Y.

Since 1857

Official Paper For
Town Of Southold
Village of Greenport

HART HARDWARE

Dutch Boy Paints

Wallpaper

Southold, N. Y.

765-2122



WHO'S WHO IN THE CAST

(Continued from Page 1)

DICK DRIES (First Man)—We asked Dick for a new "blurb" to put in this program. He said "Just put in what was in the last one". "Nothing is new". He may feel that way but we don't. Dick is not only a teacher, but is becoming a gentleman rancher. He is involved with the operation of a sheep ranch. Talk about a man of many talents. In "The Little Foxes" Dick was the bad guy. As the good guy in this production he really wears a white hat. The big problem that he causes is the fact that it is close to impossible to rehearse with him without completely going into hysterics. He has truly kept the cast in stitches.

(Continued on Page 6)

Early American Homes

George Ahlers, Builder

Eugenes Road
Cutchogue, N. Y.

Tel. 734-5010

Oscar Goldin

Auctioneer - Appraiser

Real Estate Broker

441 Main Street
Greenport, L. I., N. Y.

Tel. 477-2220

Compliments of

Russell E. Mann

Village Liquors

Main Street Southold, N. Y.

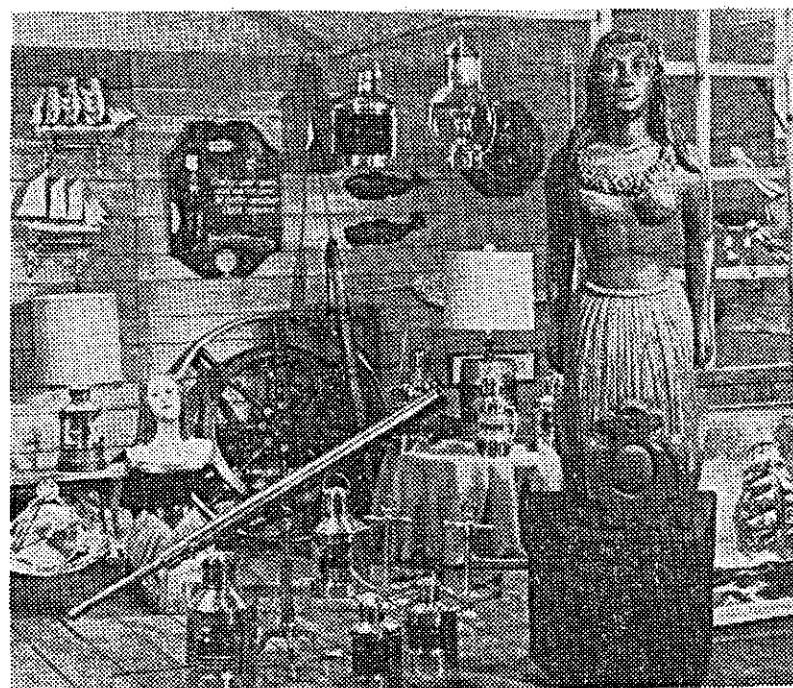
Free Delivery 765-5434

WHO'S WHO IN THE CAST

(Continued from Page 5)

BOB FREEMAN (Third Man)—This is Bob's eighth appearance on our stage. He has had roles in "The Happy Time," "Damn Yankees", "Kiss Me Kate", "There Comes a Time", "My Three Angels", "Bell Book and Candle", and "Jack In The Box". He also did sound effects for Petticoat Fever, and was stage manager for "The Little Foxes". He is presently a member of the Board of Directors of the North Fork Community Theater.

(Continued on Page 10)



A STORE for THOSE WHO LOVE SHIPS and the SEA

For Your Boat:

One of the LARGEST and MOST COMPLETE
stocks of marine supplies in Eastern Long Island

Nautical Items for your home:

- SHIP MODELS ● FIGUREHEADS
- NAUTICAL PRINTS & PICTURES
- COPPER SHIP'S LIGHTS ● MODEL BRASS CANNONS
- ESKIMO CARVINGS ● HANDCRAFTED POTTERY

PRESTON'S

at Main Street Wharf
Greenport, Long Island, N.Y.

11944

Tel: 516 477-1990

Since 1882



Ralph W. Sterling

Seeds, Plants, Nursery Stock
Landscaping, Garden Supplies
Cut Flowers

Main Road
Cutchogue, L. I., N. Y.
734-6755

**Associated
Supermarket**

Second St. New Suffolk
Tel. 734-6567

An Individually Owned
Supermarket With Personal
Service

SPECIAL THANKS TO —

Lee Adamson and the Greenport Hospital for graciously providing necessary props for Dr. Mitty and staff.

Ron Harter for his help in the preparation of our new poster format.

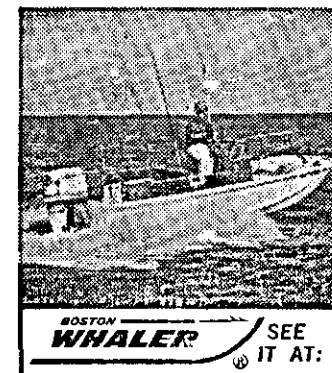
**McMANN - PRICE
AGENCY
INSURANCE**

Call "Bill" Price

238 Main Street

Greenport, N. Y.

Tel. 477-1680



Main Rd., Route 25
Southold, L. I., N. Y.
765-3131
Johnson and Bearcat

COMPLIMENTS OF

FISHERMEN'S REST

Famous For

ITALIAN FOOD — PIZZA PIES

VEAL PARMESAN

CHICKEN CACCIATORA

SERVING LUNCHEONS — 11:30 to 4:00

DINNERS — 4:00 to 11:00

WEDNESDAY IS LADIES' DAY

MAIN ROAD

CUTCHOGUE, L. I.

734-5155

WHO'S WHO IN THE CAST

(Continued from Page 6)

BETH PROOM (Third Woman)—Now that she is a full-time resident of Cutchogue, Beth has gravitated toward the NFCT as an outlet for her enthusiasm for things theatrical. This has been her first opportunity since the days of radio when, because of her association with a top New York advertising agency, she had opportunities to take part in Ripley's "Believe-it-or-not" skits on NBC and miscellaneous bits on CBS. During her two years as an NFCT member, she has worked behind scenes in Costumes and Set Decoration, and appeared in the dance scene in last season's "Jack in The Box".

(Continued on Page 16)

" See The Man From VALLEY NATIONAL "

**For All Your Banking Needs
22 OFFICES**

Serving All Of
SUFFOLK and NASSAU
Member FDIC

238 Main Street

Greenport, New York

Southold Liquor Store

Wines and Liquors

Main Road Southold, L. I.

Tel. 765-2221

Henry Smith

PLUMBING & HEATING

Southold, New York

ON STAGE

"THE TOTAL ELECTRIC HOME"

Clean, quiet and efficient as electric light . . . that's electric heat.

You don't have to store it or wait for it to be delivered. And since there's no soot, you'll find yourself painting much less often. That's just one of the ways electric heat saves you time and money.

For the first time you can dial the right temperature for each room, because you may have a thermostat for each room. It can be 65° in the kitchen and 72° in the baby's room at the same time.

Call your LILCO representative and join the many Long Island families who are living better electrically.



Martin's Gifts

Front St. Greenport, N. Y.
Tel. 477-2010

Opposite Mitchell's Restaurant
Ethel & Jim Martin

**THIS SPACE
COULD
BE
YOURS**

SOUNDVIEW Restaurant and Cocktail Lounge

PIANO BAR

North Road (27A)
Bet. Greenport & Southold
Long Island, N. Y.
Tel. 477-9840

**Eastern Suffolk's First Radio Station
And Still Number ONE**

WRIV

1390 AM RADIO

RIVERHEAD

LONG ISLAND, N. Y.

MARINE MIDLAND — TINKER NATIONAL BANK

The Action Bank With More Interest To You,
Serving Suffolk County . . .

Port Jefferson Station * East Setauket * Centereach
Patchogue * Rocky Point * Southampton * South Setauket
Smithtown

Member Federal Deposit Insurance Corporation
Federal Deposit Insurance Is Now Increased To \$15,000

Mullen Motors, Inc.

Tel. 477-1906

CHRYSLER — PLYMOUTH

Sales & Service

East Main St. Southold, N. Y.

Tel. 765-3564

FLEET LUMBER Incorporated

"For Good Measure"

Main Road Route 25
Greenport, L. I.

arcade

Front, Main &
Adams Streets
Greenport

Dept. Store Tel. 516 - 477-1440

Try The Arcade First And Get The Most
Out Of Your Shopping Mileage

**COLONIAL
DRUGS
GREENPORT**

OPEN

**MONDAY THRU SATURDAY
8:30 A. M. - 9:00 P. M.**

**SUNDAYS
9:00 A. M. - 2:00 P. M.**

THE FACULTY

**WEDDING ? — PARTY?
DANCE?**

Need A Combo?

Call A. Wilks — 765-3974
or
Ken Hollowell

14

**THE NORTH FORK
COMMUNITY THEATRE**

Presents

A Thurber Carnival

By James Thurber

By special arrangement with Samuel French, Inc.

Directed By

James Lull

C A S T

First Man Dick Dries
Second Man Art Wilks
Third Man Bob Freeman
Fourth Man Jac Saffer
Fifth Man Dick Warrington
First Woman Cindy Ackroyd
Second Woman Mary Register
Third Woman Beth Proom
Fourth Woman Eve Saffer

Everybody is a little different.

Each person's needs are a little special.

Why do they all have to fit into the same package?

They don't.

HAL YOUNG

Designer - Builder

PA 7-4927

**Wines and
Liquors
for your Party!**



765-3260

15



A little goes a long way.

Don Wald's

Autohaus
CORP.

**ROUTE 58
RIVERHEAD, L. I. NEW YORK**

WHO'S WHO IN THE CAST

(Continued from Page 10)

DICK WARRINGTON (Fifth Man)—Somebody up there must like the N. F. C. T. One week before opening night we find we are in need of an actor. We turn around and find Dick. Dick is a new-comer to this group and has recently immigrated to the United States from England. He has performed a few times in plays and Christmas shows at Oxford University.

(Continued on Page 17)

WHO'S WHO IN THE CAST

(Continued from Page 16)

MARY REGISTER (Second Woman)—was born and raised in the Midwest. She was active in her high school drama club, vocal groups, and was a French hornist in the band and orchestra. She attended the University of Florida and toured with the University Women's Glee Club.

Mary moved to Southold a year ago with her husband who is employed at the Plum Island Animal Disease Laboratory. They have three sons, Chris, Eric and Andy.

"A Thurber Carnival" marks her first appearance with a little theater group.

(Continued on Page 18)

Rackett's Esso Station

1100 Main Street

Greenport, L. I.

**Richter
HOME IMPROVEMENT CO.**

515 7th St., Greenport, N. Y.

477-0998

477-1339

Established 1880

Wm. J. Mills & Co.

AWNING-MAKERS &
SAIL-MAKERS

477-1500

125 Main Street Greenport

**Southold
Lumber Co., Inc.**

Youngs Ave., Southold, L. I.

765-2552



Restaurant & Cocktail Lounge
Main St., Greenport 477-2000

727-3620 Sag Harbor 5-1440

**R. & M. Electric
Supply Co.**

Wholesale Distributors
Lighting Fixtures & Supplies
Electric Heating Center

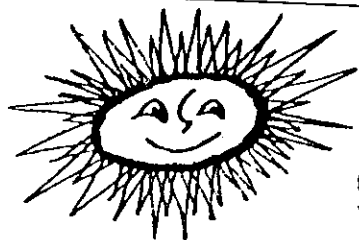
454 Riverleigh Ave., Riverhead

WHO'S WHO IN THE CAST

(Continued from Page 17)

EVE SAFFER (Fourth Woman)—This is her first appearance with us although she has been active behind the scenes with other small theatre groups. After an active career in the operation of a series of travel agencies in Manhattan and on Long Island with her husband Jac, they decided to find out what it would be like to be "free" and sleep late in the morning—Alas, falling in love with an old house, put an end to that dream. Outdoor activities and gardening are her great love.

(Continued on Page 21)

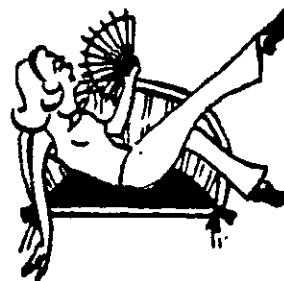


Something to give
to Somebody Special
(... and don't forget yourself)

... a vacation in the sun. Let us do
the arranging for you. We'll plan a bright
vacation to fit your mood and budget.

Greenport Travel Agency, Inc.
120 Front Street

477-0777



DRESSES - LOUNGE-WEAR
LINGERIE

**Leisurely
Yours
by
Judith**

FOR THAT
SPECIAL
Look Of LEISURE
For You And Yours

Hours 10:00 to 5:00

Southold, L. I.

Tel 765-1660

Van's Hardware

DUTCH BOY PAINTS

Housewares & Garden Supplies

Greenport, N. Y.

477-0449

S. Harding & Sons

FURNITURE — BEDDING

CARPETS

Riverhead, N. Y.

727-2064

COMPLIMENTS OF

RIVERHEAD SAVINGS BANK

7 West Main Street

Riverhead, New York

"Save At The Time and Temperature Sign"

727-3600

MEMBER F D I C

Branch Office:

2835 Old Country Rd., Lake Grove, N. Y.

FRANKLIN NATIONAL BANK

RIVERHEAD, N. Y.

MEMBER FEDERAL DEPOSIT INSURANCE CORP.

COLONIAL VILLAGE AT SOUTHOLD

One and two bedroom Garden Apartments, Permanent living for persons of mature age in a private community nestled in the heart of the charming historic Village of Southold. Short walk to shops, churches, etc.

Main St. At Ann's Way
Southold, New York
Tel. 765-3436

FOR THE GIFT OF LOVE GIVE
HER DIAMONDS

KALLER'S JEWELRY STORE



27 East Main Street
Riverhead, N. Y.
727-4099

Washington White's Sons

Hardware Marine Supplies Paint Tools
120 Main Street
Greenport, N. Y.
Telephone 477-0317

Tappert's Bookshop

STATIONERY BOOKS PRINTING
24 Front Street Greenport, L. I. 11944 Tel. 477-0206

Greenport Auto Sales

FORD — MERCURY — TRUCKS

125 Front Street
Greenport, New York

A-1 Used Cars

Barth's Drug Store

Prescription Experts

Donald F. Barth, Ph. C., Prop.
32 E. Main Street 727-2125
Riverhead, N. Y.

GREENPORT CARPET CO.

434 MAIN STREET

Tel. 477-0940

GREENPORT, N. Y.

Div. of GOLDIN FURNITURE CO., INC.

BROADLOOMS — FAMOUS BRANDS

Shop and Compare — We know you will buy here
WE INSTALL

WHO'S WHO IN THE CAST

(Continued from Page 18)

JAC SAFFER (Fourth man)—Who appeared for the first time last season in "Jack In The Box", has been a travel agent for many years. Since coming to the North Fork to live last year with his wife Eve, he has been busy remodeling the old house in which they live on Nassau Point. When he can get away for a few hours, he likes to walk along the beach, clam, fish and swim.

(Continued on Page 23)

The NORTH FORK
... BANK & TRUST CO. ...

MATTITUCK
CUTCHOGUE



SOUTHOLD
GREENPORT

JAMESPORT
SHELTER ISLAND HEIGHTS

PONTIAC CADILLAC

For 1970

VAIL BROTHERS, INC.

PECONIC LANE and ROUTE 25

PECONIC, L. I.

765-3050

734-6774

"USED CARS THAT MAKE FRIENDS"

WHO'S WHO IN THE CAST

(Continued from Page 21)

ART WILKS (second man)—Yes, he's back again. Just can't keep a ham off the stage. One of the main reasons Art took the part was the chance to work with his long tall buddy, Bob Freeman. First "Kiss Me Kate" and the last time Jack Moffat's "Jack in The Box". Will they get all the lines? Will they remember the routine? Will they get everything right? Maybe not, but they sure have fun and that is what counts. Another reason is the fact that there is a little of each of his previous parts in this one. He wants to try and redeem himself for a couple of prior bombs. Lots of luck . . . Or should we say "Break a Leg"?

**hope and connie's
gift mart**

greenport, n. y.

Let us share with you
the joy of giving

Kouros Camera Shop

Automatic - Movie And
Still Cameras

Dependability & Service
Is Our Motto

Tel. 298-8864

Main Road

Mattituck

**Tommasini
Kitchen
Cabinets**

Modernized, Installed, Financed

APPLIANCES - TV's-
STEREOS

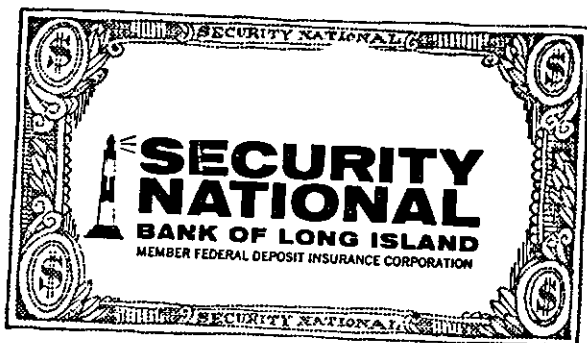
1179 Route 58
Riverhead, N. Y.
727-4332

Raymond F. Nine

RUBBISH REMOVAL

"Service is fine
When you call Nine"

New Suffolk Ave. Mattituck
298-8828



UNFINISHED FURNITURE
COMPLETE KITCHENS

FINISHED FURNITURE
COMPLETE BATHROOMS

**FLAXMAN'S
FURNITURE CORP.**

131 PECONIC AVENUE

RIVERHEAD, N. Y.



A Hotel and Motor Lodge
RIVERHEAD, LONG ISLAND
727-1000

LUNCHEON & DINNER SERVED DAILY

**FABULOUS SMORGASBORD
SERVED SUNDAYS
1 P. M. - 9 P. M.**

BANQUET FACILITIES FOR
ALL OCCASIONS

Groups 15 - 300

**THE LONG ISLAND TRAVELER
MATTITUCK WATCHMAN**

"HOME NEWSPAPER OF THE NORTH FORK"

SOUTHOLD, N. Y.

**Sunrise Coach
Lines, Inc.**

DAILY SERVICE
Greenport - Riverhead - East Hampton
Write for schedule
DELUXE COACHES FOR
ALL CHARTER OCCASIONS
West Front St., Greenport, N. Y.

477-1200

If no answer call 477-0823

I. M. Young & Co.

Division Of
Lebanon Chemical Corporation
Riverhead, N. Y.

EDITOR'S MESSAGE

It has been my good fortune to have been associated with the N. F. C. T. for quite a few years now. Each year there are new people and new opportunities to do work. I have been able to try my hand at every phase of theater production that I wanted to. I have been given the chance to do parts which were beyond me, but at least I was able to try. From one person, it has been more than great. It has been fantastic.

Art Wilks

REAL ESTATE & INSURANCE

**Russell P. Silleck
Agency**

Main Street Cutchogue, N. Y.

734-6472

If no answer call 734-6024

Flora S. Luce Walter F. Luce

**Wendy
Fabric
Shop**

Abe Millman, Prop.

Route 58 Riverhead, N. Y.

Riverhead Shopping Plaza

727-3525

Your Local Community Bank

**THE SUFFOLK
COUNTY NATIONAL
BANK**

Cor. of 2nd St. & Roanoke Ave.

RIVERHEAD, NEW YORK

Route 25-A & Manor Road

WADING RIVER

Ample Parking

Drive-in Windows

MEMBER F. D. I. C.

MITCHELL'S

RESTAURANT

Main Street, Greenport, N. Y.

C. P. Tuthill, Inc.

**Plumbing - Heating
Oil Burners**

Quality Paints, Varnishes and Supplies
Water Systems

Tel. 734-6779

**Barker's
Pharmacy, Inc.**

MATTITUCK, N. Y.

Rothman's

DEPARTMENT STORE

**GENERAL ELECTRIC
APPLIANCES & TELEVISION**

**"THE FINEST IN
MERCHANDISE and SERVICE"**

Boosters

**Hull Tuthill
Richard York Shoes
Mr. Marty's Hole In the Wall
Youth Fair
Rolle Bros.
Walter Dohm
Howdy Valentine**

SEE THE NEW

CHEVROLET

OLDSMOBILE

AT

O'KEEFE

CHEVROLET - OLDS, INC.

EAST MAIN STREET ON ROUTE 25

RIVERHEAD

26

SCENES

Act One

Word Dance (Part One)
Fables for Our Time (Part One)
The Wolf at the Door
The Unicorn in the Garden
The Little Girl and the Wolf
If Grant Had Been Drinking at Appomattox
The Macbeth Murder Mystery
Gentlemen Shoppers
The Last Flower

Act Two

The Pet Department
File and Forget
Mr. Preble Gets Rid of His Wife
Take Her Up Tenderly
The Secret Life of Walter Mitty
Word Dance (Part Two)

27

NORTH FORK SHIPYARD

The North Fork's Largest and Fastest Growing Boat Sales and Service Offers Everything For The Yachtsman.

See Us For All Your Boating Needs.

CONCORDE FIBERGLASS—27 ft. to 47 ft.

LUHRS SEA SKIFFS—All Fiberglass & Wood & Fiberglass
25ft. to 38 ft.

SEA RAY—Fiberglass Boats

ULRICHSEN SEA SKIFFS—33 ft. to 37 ft.

USED BOATS

MARINE STORE

SERVICE

STORAGE

MARINA

Visit Our Galley-Ho Restaurant —
Overlooking Peconic Bay.

Located at Foot of Main St., New Suffolk

734-6330 — 734-6350

PRODUCTION STAFF

Cover Mary Register

Publicity Jon Richmond, Anne Richmond,
Tony Dobek, Ron Harter, Les Hart, Jr.

Set Design Jon Richmond, Jim Lull

Set Construction and Decoration Jon Richmond, Anne Richmond,
Annette Lieblein, Tony Dobek, Bob Register,
Art Wilks, Margery Moffat, Steve Reed
Mary Register, Nancy Moiner, Bill Hess

Director Jim Lull

Asst. To Director Judy Anderson

Pianist Mary Raso

Drums Ken Hollowell

Flutist Dorothy Fleishman

Props Margery Moffat

Stage Manager Bill Hess

Stage Assistants Leo Carville, Rob Hess

Lighting Clacia Young, Annette Lieblein

Make-up Maureen Burns, Janet Schneider

Box Office Loretta Hess

House Manager Chuck Bondi, Bob Register

Program Editor Art Wilks

Costume Asst. Bob Register, Sis Winters, Elsie Jerred

Advertising Dick Winters, Sis Winters
Harriet Mountain, Art Ward, Jan Freeman,
Fran Osmer, Loretta Hess, Jack Reed,
Eve Saffer, Bob Ackroyd

ABOUT THE DIRECTOR

JIM LULL—Jim has been on the fringe of N. F. C. T. activities for quite a while now, but this is his first attempt to work with the group in an actual production. Jim is an English teacher, residing in Riverhead. He has acted and directed before and we are fortunate to have him with us for Thurber's Carnival. Although this has been a small cast, the diversity in characters & story line has been quite a challenge, but we are sure you will enjoy Jim's finished product.

PRODUCERS

Both George Vande Woude and Syd Breese have done many jobs for the NFCT. George has worked on sets, lights, and backstage as well as serving on the Board of Directors. Syd helped found the group and has done all backstage and technical jobs at one time or another. This show they are sharing the duties of producer.