

THE
ABSENCE
OF
A
CELL

by
IRX WALLACH.

1968

S T A G E

EXIT

A	1	2								8	9	10						
B	1	2	3	4	5	6	7			8	9	10						
C	1	2	3	4	5	6	7	8	9	10								
D	1	2	3	4	5	6	7	8	9	10								
E	1	2	3	4	5	6	7	8	9	10	11							
F	1	2	3	4	5	6	7	8	9	10	11	12						
G	1	2	3	4	5	6	7	8	9	10	11	12						
H	1	2	3	4	5	6	7	8	9	10	11	12						
										I	1	2	3	4	5	6	7	8
										J	1	2	3					

14	15	16	17	18	A		
14	15	16	17	18	19	B	
14	15	16	17	18	19	20	C
14	15	16	17	18	19	20	D
14	15	16	17	18	19	20	E
14	15	16	17	18	19	20	F
							EXIT
14	15	16	17	18	19	20	H
14	15	16	17	18	19	20	I

EXIT

FIRE NOTICE: The exit indicated by a red light and sign nearest to the seat you occupy is the shortest route to the street in the event of fire or other emergency. Please do not run — WALK to the exit.

HAVING A PARTY?

Call 298-8400 and your order will be packed and ready—no waiting

WE HAVE BEEN SERVING THE NORTH FORK FOR 19 YEARS WITH THE FINEST SELECTIONS, COURTEOUS SERVICE AND COMPETITIVE PRICES.

VAN DEUSEN LIQUOR STORE

OPPOSITE RAILROAD IN MATTITUCK

NFCT MEMBERS and PATRONS

We Invite Your Inspection Of Our Large Selection Of Choice Domestic and Imported Wines at Reasonable Prices



A unique shop featuring fine table accessories, china, crystals, pewter, linens and WEDGWOOD jewelry.

THE WEDGWOOD SHOP

ROUTE 27A (North Road)

SOUTHOLD, N. Y.

765-2000

PRESIDENT'S MESSAGE

Welcome to the beginning of the 12th season of the NFCT. We hope that with this production, THE LITTLE FOXES in mid-winter and Jack Moffat's new musical in the spring, we are presenting our most entertaining season.

You may have noticed that we have raised ticket prices for those purchased separately for each show. However, we have not raised our subscription price; this remains at \$5. It is not too late to take advantage of this offer. Simply return your ticket stub and an additional \$3 to the box office and you will be entered as a subscriber.

We have continued to add to our equipment. We have purchased a new light board. As this is mastered, we should be able to handle this aspect of our productions even better than in the past.

Look through the cast and the production staff. You will see a large number of new names. If you have an interest in any aspect of play production, please feel free to come to one of our regular monthly meetings. These are held on the second Tuesday of each month. Come — we will soon have you to work, joining in the pleasure and satisfaction of a good production with these new members as well as our experienced members.

One last word. The revenue from the advertisements in our program are extremely important to our financial stability. Please tell our advertisers that you saw their ad in our program.

Once again I hope you will enjoy tonight's production.

Compliments of
GREENPORT
I G A

GOLDSMITH'S BOAT SHOP, INC.

EVINRUDE MOTORS

Stamas Boats — M. F. G. Boats
Duranautic Boats
Pioneer Chain Saws

Southold **New York**
516 765-1600

2

OYSTERPONDS HISTORICAL SOCIETY

VILLAGE LANE, ORIENT

Colonial and Victorian buildings housing a unique display of Local Sea & Land memorabilia covering a period from early Indian encampments to turn-of-the-century farms.

Open: July, August, September

KALIN FLORISTS



GARDEN CENTER

GREENPORT

477-0618

3

WICKHAM'S FRUIT FARM

THE CHOICEST OF FRUITS

Cutchogue, L. I.

THE OSPREY SHOP

MAIN ROAD — ORIENT

Located in Orient, A Special Place
So We Have To Be
Refreshingly Different

Fine gifts and home accessories
displayed in the quaint setting of
an old country home and barn.

Tel. 323-2420

SOUTHOLD SAVINGS BANK

"HOME FOR SAVINGS SINCE 1858"

Southold, N. Y.

Member Federal Deposit Insurance Corp.

VOJVODA CLEANERS & SHIRT LAUNDERERS, INC.

SAME DAY SERVICE

FUR & WOOL STORAGE VAULTS

RUG CLEANING

712 EAST MAIN STREET

RIVERHEAD, NEW YORK

727-2432.



WHO'S WHO IN THE CAST

GERTRUDE REYNOLDS (Celia) — 1964 was a good year. One of the reasons for this is that in 1964 Gertrude Reynolds joined the NFCT. Since then she has become one of our leading ladies, successfully appearing in Blythe Spirit, The Potting Shed, Write Me a Murder, and her favorite — Mary Mary. The last because "Mary was such a fun gal to be for the six weeks of rehearsal time!" Gert has also been a star at back stage work. Consider these jobs which were all well done, and then you will understand why she is one of our assets in all fields of production. Producer, lighting technician, property manager, house manager, prompter. To top those off she also found time to serve a two year stint on the Board of Directors. We feel that this will be another of our better productions. Why not; we have Gert opening it for us.

(Continued on Page 6)

WHO'S WHO IN THE CAST

(Continued from Page 5)

HAL YOUNG (Andrew) — How do you list the credits of a man like Hal? You don't. You simply panic every time he starts to talk about moving to some place like St. Lucia. You look for him at every try-out hoping that he will show up. You hope that he will not be too tied up in his own life and say that he will not be able to give you a hand at the theatre. You simply know that what Hal does will be done right. And most of all you hope that if he gets a part that you too will get one, for you know that it will turn out to be the fun that everyone keeps talking about.

(Continued on Page 10)

FROHNHOEFER

Pretty Store, Pretty Lamps &
Shades, Gifts, Candles,
Hallmark Cards

MAIN STREET
SOUTHOLD, NEW YORK

765-2100

GEORGE L. PENNY, INC.

LUMBER and

BUILDING MATERIALS

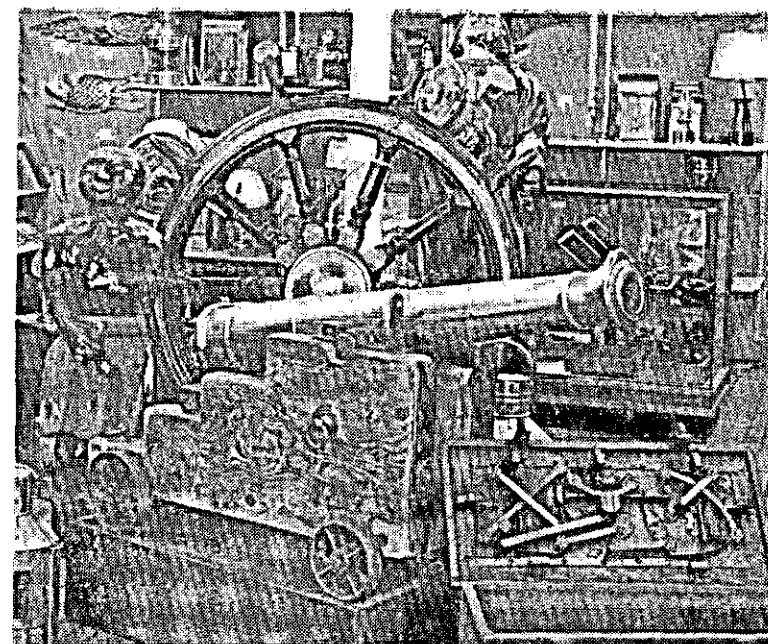
Over 75 Years of Building

Supply Service

MATTITUCK - GREENPORT

298-8559

477-0400



Above, Marine antiques in Preston's store: A treasure chest (1690); Brass Cannon dated 1838, attributed to H. M. S. Trafalgar, and two ships' figureheads from the 18th century are shown.

PRESTON'S *The most unique marine supply store on Eastern Long Island since 1882*

- Rope, Marine Hardware, Safety Equipment, Paint, Navigational Aids, Nautical Gifts
- CHART HEADQUARTERS for the Yachtsman
- Visit our "Ship & Sea" Gallery — choose from more than 150 framed Marine Pictures—originals and Reproductions
- THE POTTERY SHED - hand crafted pottery and ceramic pieces.
- SHIP MODELS in finished and kit form - clipper ships, whalers - more than 35 historic sailing ships.

PRESTON'S

at Main Street Wharf
Greenport, Long Island, N. Y.
Opposite Claudio's Restaurant
477-1990

**LEWIS
REALTORS**
SO 5-3416
MAIN ROAD SOUTHOLD

RIVERHEAD SAVINGS BANK

RIVERHEAD, NEW YORK

COMPLETE MORTGAGE
SERVICE

SAVINGS INTEREST
from DAY of DEPOSIT

Member Federal Deposit Insurance Corporation

IN GREENPORT
**HULSE'S
SERVICE STATION**

SUNOCO PRODUCTS

Greenport, N. Y.

Tel. 477-0384

COMPLIMENTS OF

**MR. & MRS.
JACK LEVIN**

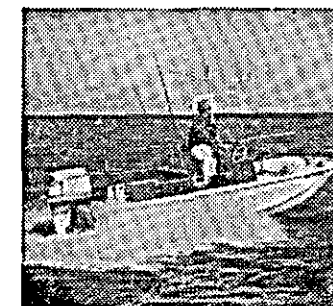
**McMANN - PRICE
AGENCY
INSURANCE**

Call "Bill" Price

238 Main Street

Greenport, N. Y.

Tel. 477-1680



BOSTON
WHALER SEE
IT AT:

HOWBOATS TO SHOWBOATS.
Ulrich Marine
LARGEST DISPLAY ON EAST L.I.

Main Rd., Route 25
Southold, L. I., N. Y.

765-3131

Johnson & Homelite Motors

FROM THE NFCT TO OUR AUDIENCE

At this time we would like to ask a favor of you.

As you can see, we have had much success in our program advertisement. Although we do get revenue from you as an audience, we find that without the income from the program it would be quite difficult to put on enjoyable plays as well as improve our equipment to meet our ever growing needs. For example; this year we purchased new lighting equipment which cost almost \$2000. This may sound expensive, but technical problems and safety considerations forced it. This is "COMMUNITY THEATRE" and now we are asking you, the community, to aid us. Please, look through our advertisers' ads; if you can, stop in and see what they can do to help you. We are sure that all of your needs can be satisfied by these people who are your neighbors, and — oh, yes please say that we sent you. Thank you.

WHO'S WHO IN THE CAST

(Continued from Page 6)

PATRICIA TUCKER (Marian) — This is Pat's first appearance with the NFCT. Having recently arrived from Ankara, Turkey to take up residence in Orient, and a teaching position at the Greenport School, she was introduced to the theatre group by her sister and brother-in-law; the Richmonds.

Her previous experience with theater runs the gamut of characters from Agnes Gooch in "Auntie Mame" to Helena in "A Midsummer Night's Dream". She has worked with several repertory theaters in Philadelphia including The Summer Shakespeare Festival. We realized at tryouts that we had a real find in Pat, and we are hoping that she will be with us for a long time to come.

KATHY CAHILL (Joanna) — One of our younger members, 14 years old, a sophomore at Mercy High School in Riverhead, and the oldest of ten children, Cathy has become one of our troopers. Other than her interest in the theater she is in the glee club, the Forensic club, and cheerleading. For the NFCT she has doubled in the musical "She Loves Me" as a member of the chorus and the young date of Mr. Lizst in the Cafe Imperiale. She also worked on the set of "Bell Book and Candle". Cathy's future interests are varied. She either wants to be a Broadway actress, a teacher, or a social worker. Come to think of it they do have a lot in common.

(Continued on Page 13)

" See The Man From VALLEY NATIONAL "

For All Your Banking Needs

Serving All Of

SUFFOLK and NASSAU

Member FDIC

238 Main Street

Greenport, New York

WOOD, WALKER & CO.

Members: New York Stock Exchange Since 1869

RUSSELL E. MANN, Mgr.

132 FRONT ST.

GREENPORT, L. I., N. Y.

477-1785

ON STAGE

"THE TOTAL ELECTRIC HOME"

Clean, quiet and efficient as electric light . . . that's electric heat.

You don't have to store it or wait for it to be delivered. And since there's no soot, you'll find yourself painting much less often. That's just one of the ways electric heat saves you time and money.

For the first time you can dial the right temperature for each room, because you may have a thermostat for each room. It can be 65° in the kitchen and 72° in the baby's room at the same time.

Call your LILCO representative and join the many Long Island families who are living better electrically.



Kenneth Thurber

Branch Manager

NASSAU SUFFOLK

RIVERHEAD

LUMBER & SUPPLY CORP.

RIVERHEAD

BOOSTERS

RICHARD YORK SHOES

HOWDY VALENTINE

MR. WALTER DOHM

HULL TUTHILL

DICKERSON'S MARINE

RIVERHEAD WINES & LIQUORS



122 FRONT STREET — GREENPORT

We are open all year for your shopping pleasure.

You are welcome — come and browse.

Sincerely, Ethel and Jim Martin

Eastern Suffolk's First Radio Station

And Still Number ONE

WRIV

1390 AM RADIO

RIVERHEAD

LONG ISLAND, N. Y.

WHO'S WHO IN THE CAST

(Continued from Page 10)

Alice Dart (Emma Littlefield) — We were talking to some members of the community the other day, and naturally we asked them if they were planning on coming to the play. They said that they were, and in the conversation it came out that one of the reasons for their plans was that they had heard Alice had a part. "We always enjoy Alice so much on stage" was the comment they made, and to put it mildly we couldn't agree with them more. It seems to us that one of the reasons that Alice is so enjoyable on stage is just because she seems to be having such a good time herself. Alice has appeared with us in "Romanoff and Juliet", "Guys and Dolls" and who can forget Tituba in "The Crucible"?

(Continued on Page 16)

Hart Hardware

Dutch Boy Paints
Wallpaper

Southold, N. Y.

765-2122

Colonial Liquor Store

WE DELIVER

Love Lane Mattituck, N. Y.

298-4650

Compliments of

Mr. & Mrs.

Donald Katz

Youth Fair

Patchogue — Riverhead

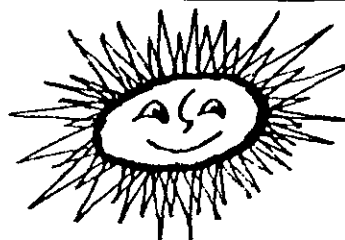
Be Sure To See
Our Winter Production
LITTLE FOXES

"THE KING OF UNFINISHED FURNITURE"

FLAXMAN'S FURNITURE CORP.

131 PECONIC AVENUE

RIVERHEAD, N. Y.



Something to give
to Somebody Special
(... and don't forget yourself)

... a winter vacation in the sun. Let
us do the arranging for you. We'll plan a
bright vacation to fit your mood and
budget.

Greenport Travel Agency, Inc.

120 Front Street

477-0777



Restaurant & Cocktail Lounge

Main St, Greenport 477-2000

Mattituck Bowl

Open Bowling On Weekends

Bar and Refreshments

298-8982

Richter

HOME IMPROVEMENT CO.

515 7th St., Greenport, N. Y.

477-0998

477-1339

Southold

Lumber Co., Inc.

Youngs Ave., Southold, L. I.

765-2552

TINKER NATIONAL BANK

the action bank with more interest in you.

Port Jefferson Station * East Setauket * Centereach
Patchogue * Rocky Point * Southampton * South Setauket
Smithtown

Member Federal Deposit Insurance Corporation

Federal Deposit Insurance Is Now Increased To \$15,000

WHO'S WHO IN THE CAST

(Continued from Page 10)

PAUL TRAUTMAN (Perry Littlewood) — We asked Paul to give us some background material for his write up. This is one time that we had a good idea, for as you will gather from some of the information below a younger mind can be very refreshing.

Paul was a daffodil in the first grade. (Not many actors have that distinction). He was also a spaceman in sixth grade and a precocious kid in the NFCT's production of "Happy Time". (This was one of the first plays that this writer saw at the NFCT, and I would like to add that I can still remember Paul's characterization. I think he did a fine job.)

A graduate of Southold High School he has been "catching education and dust for twenty-one years". (No dust shows in this performance.) It is nice to have Paul back with us after his educational leave of absence.

(Continued on Page 22)



The finest in beauty care for the
discriminating woman

477-0612

William's Beauty Shoppe

William Fuccillo

218 Main St. Greenport, N. Y.

Specialist in Hair Shaping, Styling
and Permanent Waving

727-3620 Sag Harbor 5-1440

R. & M. Electric Supply Co.

Wholesale Distributors
Lighting Fixtures & Supplies
Electric Heating Center

454 Riverleigh Ave., Riverhead

MITCHELL'S

RESTAURANT

Main Street, Greenport, N. Y.

FRANK MURPHY GARDEN CENTER & FLORIST

FLOWERS FOR
ALL OCCASIONS

— LANDSCAPING —

Main Road, Mattituck
298-4055

Established 1880

Wm. J. Mills & Co.

AWNING-MAKERS &
SAIL-MAKERS

477-1500

125 Main Street Greenport

In Greenport It's

J A E G E R' S

DEPARTMENT STORE

Featuring

Venetian Blinds Floor Covering

Ozite Carpet

Telephone 477-0191

**COLONIAL
DRUGS
GREENPORT**

OPEN

MONDAY THRU SATURDAY
8:30 A. M. - 9:00 P. M.

SUNDAYS
9:00 A. M. - 6:00 P. M.

Silkworth
INC.

REAL ESTATE & INSURANCE

ANNOUNCING OUR 56th
ANNIVERSARY

OVER A HALF CENTURY OF
SERVICE, 1913 — 1969

Realistic Value Listings

Always Welcome

OFFICE - MAIN ROAD

Tel. 298-4747

18

**THE NORTH FORK
COMMUNITY THEATRE**

Presents

The Absence Of A Cello

A Comedy In Three Acts

By Ira Wallach

Directed for the North Fork Community Theatre

By Clacia Young

By special arrangement with Dramatists Play Service, Inc.

CAST

(In Order Of Appearance)

Celia Pilgrim Gertrude Reynolds
Andrew Pilgrim Hal Young
Marian Jellicoe Patricia Tucker
Joanna Pilgrim Cathy Cahill
Emma Littlewood Alice Dart
Perry Littlewood Paul Trautman
Otis Clifton Dick Dries

Everybody is a little different.

Each person's needs are a little special.

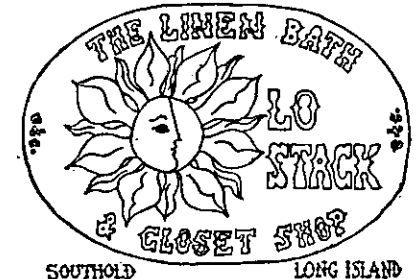
Why do they all have to fit into the same package?

They don't.

HAL YOUNG

Designer - Builder

PA 7-4927



All Our Accessories Are Color
Co-ordinated—Come 'N' Browse

19

SYNOPSIS OF SCENES

ACT I

The living room of Andrew Pilgrim's New York apartment
late Sunday

ACT II

The same, the next morning

ACT III

The same, the next morning
Time: The Present

PLAN ON SEEING
OUR SPRING MUSICAL

AN ORIGINAL BY
JACK MOFFAT

Author Of

"There Comes A Time"
"The Peanut Butter Prince"



A little goes a long way.

Don Wald's

Autohaus
CORP.

ROUTE 58
RIVERHEAD, L. I. NEW YORK

HOPPY'S CLEANERS & LAUNDRY

329 FRONT STREET
GREENPORT, N. Y.
477-1110

"A Local Industry Willing And Able To Serve YOU Better"

S. Harding & Sons

FURNITURE — BEDDING
CARPETS

Riverhead, N. Y. 727-2064

Van's Hardware

DUTCH BOY PAINTS
Housewares & Garden Supplies

Greenport, N. Y.
477-0449

East End Supply Co., Inc.

MARINE — INDUSTRIAL — FISHERY SUPPLIES

203 Front Street

Greenport, L. I., N. Y.

John W. Duryee

Hardware — Marine Equipment
House Furnishings — Paints
G. E. Appliances

Love Lane Mattituck, N. Y.

298-8420

North Fork Laundri - Kar

Self Service Laundry & Car Wash

OPEN 24 HOURS

Greenport, N. Y.

Completely Softened Water

WHO'S WHO IN THE CAST

(Continued from Page 16)

DICK DRIES (Otis Clifton) — Dick, like so many of our members, is a man of many and varied talents. He has not been with the NFCT for a few years due to a packed time schedule. He was in our first, and possibly best remembered musical "Guys and Dolls". He was also in our second big musical "Damn Yankees". Since then he has appeared in "Inherit the Wind" and "Teahouse of the August Moon" as a member of the Sayville Musical Workshop.

Dick currently resides on Nassau Point, and is teaching Spanish at Southold High School. He spent 9 years in the army, nine of which were in Europe. He has studied 3 summers in Mexico — working toward a Ph. D. in Spanish, and he studied for a year at the University of Arizona on a sabbatical leave again doing work toward his doctorate. In his "spare" time he fishes, swims, rides, and bowls. May we take this time to simply say Welcome back to the NFCT Dick.

arcade

Front, Main &
Adams Streets
Greenport

Dept. Tel. 516 - 477-1440
Store

Try The Arcade First And Get The Most
Out Of Your Shopping Mileage

FRANKLIN NATIONAL BANK

RIVERHEAD, N. Y.

MEMBER FEDERAL DEPOSIT INSURANCE CORP.

Tel. 477-1906

FLEET LUMBER COMPANY

"For Good Measure"

Main Road

Route 25

Greenport, L. I.

FOR THE GIFT OF LOVE GIVE
HER DIAMONDS

KALLER'S JEWELRY STORE



27 East Main Street

Riverhead, N. Y.

727-4099

The Little Traveler

— SELECT IMPORTS —
Personal and Household
Accessories

Main Road Southold, N. Y.
Tel. 516 765-5510
Helen LePorin

Vacuum Cleaner Center

Nassau Renewal Parts, Inc.

Route 27A North Road
765-3513 Southold, N. Y.

ABOUT THE DIRECTOR

Clacia Young — wife of Hal Young and mother of Clayton Young. Now there is theater. When we at the NFCT talk about the theatre we do not talk about "it", but we talk about the people in it. We talk about those people who make our theater live. Clacia is one of those people. Her only problem is her inability to say NO. Ask her to produce, direct, prompt, design, construct, act, sweep, throw a party, help people get rid of opening night jitters or any thing else. Just ask her. She'll say yes. To make it even better you can count on it being done well.

Clacia's accomplishments, which are many, could be listed here, but she is more to the NFCT than just a bunch of credits. We are proud to have her with us.

Barth's Drug Store

Prescription Experts

Donald F. Barth, Ph. C., Prop.
32 E. Main Street 727-2125
Riverhead, N. Y.

Christopher of High Fashion

Budget and Save
Coloring, Styling, Permanents
Wig Salon, Wigs, Falls, Hairpieces
Boutique Shop featuring the latest
earrings in fashion, from India

201 Railroad Avenue
727-3991 Riverhead, L. I.

SEE THE NEW

CHEVROLET

OLDSMOBILE

AT

O'KEEFE

CHEVROLET - OLDS, INC.

EAST MAIN STREET ON ROUTE 25

RIVERHEAD

Your Local Community Bank

THE SUFFOLK COUNTY NATIONAL BANK

Cor. of 2nd St. & Roanoke Ave.
RIVERHEAD, NEW YORK

Route 25-A & Manor Road
WADING RIVER

Ample Parking
Drive-in Windows

MEMBER F. D. I. C.

HERB McCARTHY'S GENERAL WAYNE INN

BAYVIEW ROAD, SOUTHOLD
765-5544

On The South Fork Visit
Herb McCarthy's
Bowden Square
SOUTHAMPTON, N. Y.

THE EDITOR'S PAGE

We have started a new season with the North Fork Community Theatre, and to say the least it looks as if it will be a good one. One of the signs of this is the fact that we have a lot of new faces in the group this year, and what's more many of our group who have not been with us for awhile are back again.

We are changing our format a little bit this year also. We have decided that instead of having the musical in the winter, as we usually do, we are going to produce it in the spring. That is another reason for us to be excited. It will be another original by our own musical author — Jack Moffat. His last two "The Peanut Butter Prince", and "There Comes A Time" were two of our biggest successes, so now you may have an idea as to why we are looking forward to this one. We hope you enjoy yourself tonight, and will continue to be with us for the rest of the season. Thank you for coming, and now — on with the show.

Mignon

For Those With A Flair For Fashion

DAVID CRYSTAL

CAPRIEL KNITS

PENDLETON

CATALINA

WARNERS BRAS & GIRDLES

VANITY FAIR

Main Road

Southold, N. Y. 11971

765-2585

26

C. P. Tuthill, Inc.

Plumbing - Heating
Oil Burners

Quality Paints, Varnishes and Supplies
Water Systems

Tel. 734-6779

Southold Hardware

Sherwin-Williams &
Keystone Paints

Mowers — Sales & Service

Tel. 765-2277

Barker's

Pharmacy, Inc.

MATTITUCK, N. Y.

Southold

Liquor Store

Main Road

Free Delivery

765-2221



27

A DISSERTATION ON WHY WE ARE UNABLE TO ANNOUNCE IN THIS PROGRAM OUR SCHEDULE OF PLAYS FOR NEXT SEASON

Dave Detrich

In November of each year the Playreading Committee holds its first meeting. The chairman and several volunteers meet with high hopes and great expectations. They have heard rumors that this is a long, hard job. How could it be? There are so many great — well, at least good — plays we haven't done. It will just be a process of selecting three we want to do. Easy job? Ha!

The first meeting goes smoothly. Each member has a number of suggestions. These go on a list. All go home to read, read, read.

The second meeting discloses the problem. The number of different opinions equals the number of members of the committee. One play is discarded because it has been done by all the high schools. Another play has an unsuitable theme. Others we can't cast. This one has unpleasant characters. That one is supposed to be funny or suspenseful and isn't. We can't do this musical because it relies too heavily on one or two people. Too much accent on dancing in that musical. Look at the problems in costuming that one. How many sets

(Continued on Page 30)

PONTIAC CADILLAC

For 1969

VAIL BROTHERS, INC.

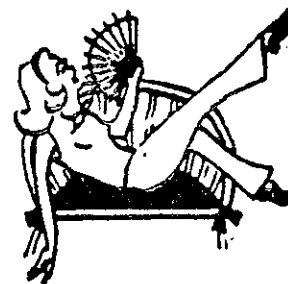
PECONIC LANE and ROUTE 25

PECONIC, L. I.

765-3050

734-6774

"USED CARS THAT MAKE FRIENDS"



DRESSES - LOUNGE-WEAR
LINGERIE

**Leisurely
Yours**
by
Judith

**FOR THAT
SPECIAL
Look Of LEISURE
For You And Yours**

Hours 10:00 to 5:00

Southold, L. I.

Tel 765-1660

GREENPORT CARPET CO.

434 MAIN STREET

GREENPORT, N. Y.

Tel. 477-0940

Div. of GOLDIN FURNITURE CO., INC.

BROADLOOMS — FAMOUS BRANDS

Shop and Compare — We know you will buy here

WE INSTALL

The NORTH FORK
... BANK & TRUST CO. ...

MATTITUCK
CUTCHOGUE



SOUTHOLD
GREENPORT

JAMESPORT
SHELTER ISLAND HEIGHTS

Artists' Supplies
Paints — Wallpaper

**Peconic Paint
Products, Inc.**

942 W. Main St. Riverhead
"Suffolk's Complete Art Center"

- Potato Harvester
- Potato Bin Loader
- Potato Conveyor
- Oliver Tractor
- Davis Trench Diggers
and Backhoes

Rolle Brothers

Route 58 Riverhead, N. Y.

**Wendy
Fabric
Shop**

Abe Millman, Prop.

Route 58 Riverhead, N. Y.
Riverhead Shopping Plaza
727-3525

Kouros Camera Shop

Automatic - Movie And
Still Cameras

Dependability & Service
Is Our Motto

Tel. 298-8864

Main Road Mattituck

**I. M. Young &
Co., Inc.**

Southold — Cutchogue
Riverhead — Calverton
Bridgehampton — Port Jefferson

REAL ESTATE & INSURANCE

**Russell P. Silleck
Agency**

Main Street Cutchogue, N. Y.
734-6472
If no answer call 734-6024
Flora S. Luce Walter F. Luce

**ROY H. REEVE
Insurance Service**

Office Phones — 298-4700 — 298-4701 — 722-3520

MAIN STREET
MATTITUCK, N. Y.

**A DISSERTATION ON WHY WE ARE UNABLE TO ANNOUNCE IN
THIS PROGRAM OUR SCHEDULE OF PLAYS FOR NEXT SEASON**

(Continued from Page 30)

ed down by an earlier play reading committee. A couple of years ago the following report was given at our May meeting: "The Playreading Committee has met 17 (!) times. We have narrowed our list from five to twenty-two."

However, the deadline approaches. It is expected that the plays will be announced at the June general meeting. Now the members are trying to reach a decision on those plays which have survived so far (though a new entry at the last moment may steal acceptance). It is no longer a question of choosing the best but choosing the one that will give us enjoyment in doing it and give you enjoyment in watching it done. And after all has been said, this is our only purpose.

N. B. If you know of a play which can survive this rigorous pummeling, please tell us. We don't guarantee it will appear on our schedule, but we do guarantee it will be torn apart and scrutinized from every angle.



Raymond F. Nine

RUBBISH REMOVAL

"Service is fine
When you call Nine"

New Suffolk Ave. Mattituck
298-8828

**Rothman's
DEPARTMENT STORE**

GENERAL ELECTRIC
APPLIANCES & TELEVISION

"THE FINEST IN
MERCHANDISE and SERVICE"



LUNCHEON & DINNER SERVED DAILY

**FABULOUS SMORGASBORD
SERVED SUNDAYS
1 P. M. - 9 P. M.**

**BANQUET FACILITIES FOR
ALL OCCASIONS**

Groups 15 - 300

DAVANN

MEN'S AND BOYS' APPAREL

Greenport

Mattituck

Shelter Island

COLONIAL VILLAGE AT SOUTHOLD

One and two bedroom Garden Apartments, Permanent living for persons of mature age in a private community nestled in the heart of the charming historic Village of Southold. Short walk to shops, churches, etc.

Main St. At Ann's Way

Southold, New York

Tel. 765-3436

IN SOUTHOLD

CHERRY'S CHEVRON STATION

**FOR GAS, TIRES,
LUBRICATION AND
FRIENDLY SERVICE**



Stan Cierach

BOARD OF DIRECTORS

President David Detrich
Vice-President Clacia Young
Treasurer Jack Moffat
Secretary Linda Graham

Directors

Joan Hindermann, Dick Winters, Loretta Hess, Hallock N. Young, Robert Freeman, Jon Richmond, Harriet Mountain, Art Wilks

Reeve Lumber & Woodworking Co., Inc.

MATTITUCK 298-4711

MILLWORK
PAINTS
LUMBER
HARDWARE

Sunrise Coach Lines, Inc.

**DAILY SERVICE
Greenport - Riverhead - East Hampton**

**Write for schedule
DELUXE COACHES FOR
ALL CHARTER OCCASIONS
West Front St., Greenport, N. Y.
477-1200**

If no answer call 477-0823

Eckert Oil Service, Inc.

**FUEL OIL
BUDGET PLANS
Mattituck, L. I.
298-4197**

Mattituck Plumbing & Heating Corp.

- We sell
 - We install
 - We guarantee
- 298-8393**

NORTH FORK SHIPYARD

The North Fork's Largest and Fastest Growing Boat Sales and Service Offers Everything For The Yachtsman. See Us For All Your Boating Needs.

OWENS YACHTS WOOD 28ft. to 42 ft.

CONCORDE FIBREGLASS BY OWENS 27 ft. to 47 ft.

LUHRS SEA SKIFFS—(Wood and Fibreglass) 25 ft. to 32 ft.

INTERNATIONAL BOATS

NAUTALINE HOUSEBOATS

USED BOATS

MARINE STORE

SERVICE

STORAGE

MARINA

*Visit Our Galley-Ho Restaurant —
Overlooking Peconic Bay.*

Located at Foot of Main St., New Suffolk

734-6330 — 734-6350

PRODUCTION STAFF

Director Clacia Young
Producers Ann E. Detrich
Anne Richmond
Set Design Hal Young
Set Construction Jon Richmond, Bill Taylor
Art Wilks, Max Brugh
Set Decoration Inez & Herb Moon, Beth Proom
Janet Freeman, Dot Fleichman
Assistant to Director Agnes Mothersele
Props Fran Osmer, Jean Tiedke
Costumes Maureen Cahill, Het Dries
Stage Managers Muriel Winters, Betty Hagerman
Lighting Art Wilks
Publicity Jon Richmond, Bill Taylor
House Manager Jack Moffat
Box Office Ann E. Detrich
Awards Janet Freeman
Advertising Manager Harriet Mountain
Make-up Maureen Moffat, April Freeman,
Maureen Burns
Program Art Wilks
Program Cover Ralph Williams
Subscription Chairman Ruth Becker
Ticket Manager Ann E. Detrich
Casting Committee Loretta Hess, Chairman,
Clacia Young, Ann Detrich,
Ann Richmond, Maureen Cahill, Beth Proom

Co-Producers

ANN E. DETRICH

Ann E. Detrich joined the group in 1962 and has worked both on and off the stage. She has appeared in PAJAMA GAME, CRITIC'S CHOICE and KISS ME KATE. When the need arose she has also appeared as the show stopping Dragon in THE PEANUT BUTTER PRINCE. Off stage she has been Props Chairman, Stage Manager, Costumes Chairman, Prompter, and most recently in charge of the box office. This year she has also taken on the additional responsibility of ticket manager. She is married to David Detrich, this year's President. They live in East Marion with their one-year old Stephen and their pet cat Boston, who appeared in last season's production of BELL, BOOK and CANDLE.

ANNE RICHMOND

Anne has been a member of the NFCT since last year when she, luckily for us, played the piano for "She Loves Me". Along with her husband Jon she was active in the "Peanut Butter Prince" (Assistant to the Director) and "Bell Book and Candle" (Publicity and Properties).

Prior to moving to the North Fork she worked with various amateur groups, including the Bryn Mawr Repertory Theatre in Pennsylvania. Anne and Jon now reside in Orient with Bismarck (a large Great Dane) and three cats. She is a member of the Greenport High School Science department.

If you enjoyed tonight's play why not consider becoming a subscriber to the NFCT for the rest of the season? Ask any member about the benefits connected with a subscription, or leave your name and address with the box office or an usher and we will mail the information to you.

HAVE YOU BEEN NOTICING OUR ADVERTISEMENTS? WHY NOT? YOU HAVE EVERYTHING TO GAIN. Our advertisers can meet any requirement for the NORTH FORK COMMUNITY. (Or any community for that matter.)